

Polyimide Heaters

author: andy selvy, chief systems designer



WATLOW®

Powered by Possibility

Watlow Polyimide Heaters:

Versatile
Heating
Solutions
for Diverse
Industries and
Applications

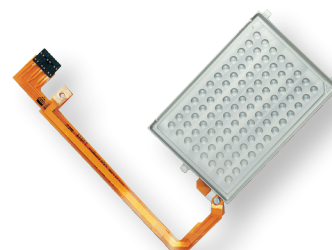
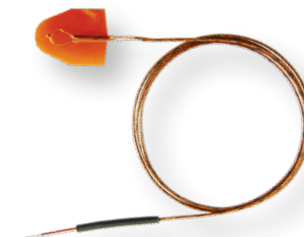
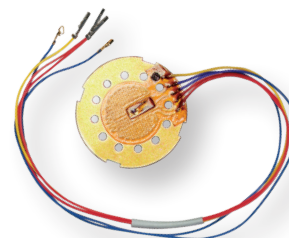
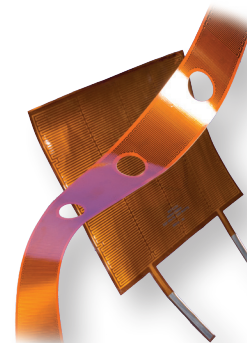


Leveraging cutting-edge technology and exceptional engineering Watlow® polyimide heaters are tailored to meet the unique heating needs of diverse industries and applications. Whether it's aerospace, medical devices, automotive, electronics, or many other fields, our polyimide heaters offer unmatched performance, reliability, and flexibility.



What Sets Watlow Polyimide Heaters Apart:

1. **High-Temperature Capability:** Our polyimide heaters can withstand temperatures up to 200-250 degrees Celsius, making them ideal for applications requiring heating in extreme environments.
2. **Excellent Thermal Stability:** Built with premium-grade polyimide materials, our heaters maintain their mechanical and electrical properties even when exposed to high temperatures for extended periods, ensuring consistent and reliable heating performance.
3. **Fast and Uniform Heating:** Equipped with exceptional heat transfer properties, our polyimide heaters provide rapid and uniform heat distribution across their surface, minimizing hot spots and cold spots for efficient and reliable heating.
4. **Thin and Lightweight Design:** Our flexible and thin construction allows our heaters to conform to various shapes and surfaces, making them perfect for applications with limited space and weight constraints.
5. **Chemical Resistance:** Our polyimide heaters boast superior resistance to chemicals, solvents, and oils, making them suitable for demanding industrial environments.
6. **Electrical Insulation:** Safety is paramount, and our heaters offer excellent electrical insulation properties, ensuring secure and reliable heating even in critical applications.
7. **Customizable Solutions:** We understand that one size doesn't fit all. Our polyimide heaters can be tailored to your specific requirements, with options for shape, size, wattage, voltage, and heating patterns, providing seamless integration into your processes.
8. **Durability and Longevity:** Our heaters are built to last, designed to withstand mechanical stress, vibrations, and repetitive bending without compromising their heating performance, ensuring a prolonged service life.
9. **Energy Efficiency:** With high thermal conductivity and minimal heat loss, our polyimide heaters convert electrical energy into heat with utmost efficiency, resulting in cost savings and reduced energy consumption.



Explore the endless possibilities polyimide heaters offer across various industries and applications. Our experts are ready to assist you in selecting the right solutions for your application needs and providing technical support to ensure a seamless experience.

Further information is available at: www.watlow.com