

# Bug Report Siglent SDG2000x

Date: 28 March 2021

Bug related to Labview driver SDGXSeries\_LabView\_Driver\_1.0.2.zip  
With latest Labview community edition 2020

## Description

Using the latest published firmware 2.01.01.35R3B2

Gives an error.

See figure1 below.

## Partly Resolved

by using firmware 2.01.01.35R3B3 from a zipfile kindly provided by  
Rob Annandale [tautech.nz@gmail.com](mailto:tautech.nz@gmail.com)

One of the examples from the 1.0.2 zipdriver is not working.

The sweep example has a problem. It has been resolved by removing the three ',' as shown in figure2.

## To do:

- 1) Make available newest firmware version with an updated firmware revision history pdf with all the changes made.
- 2) Make available a new Labview driver/examples file with a updated readme.

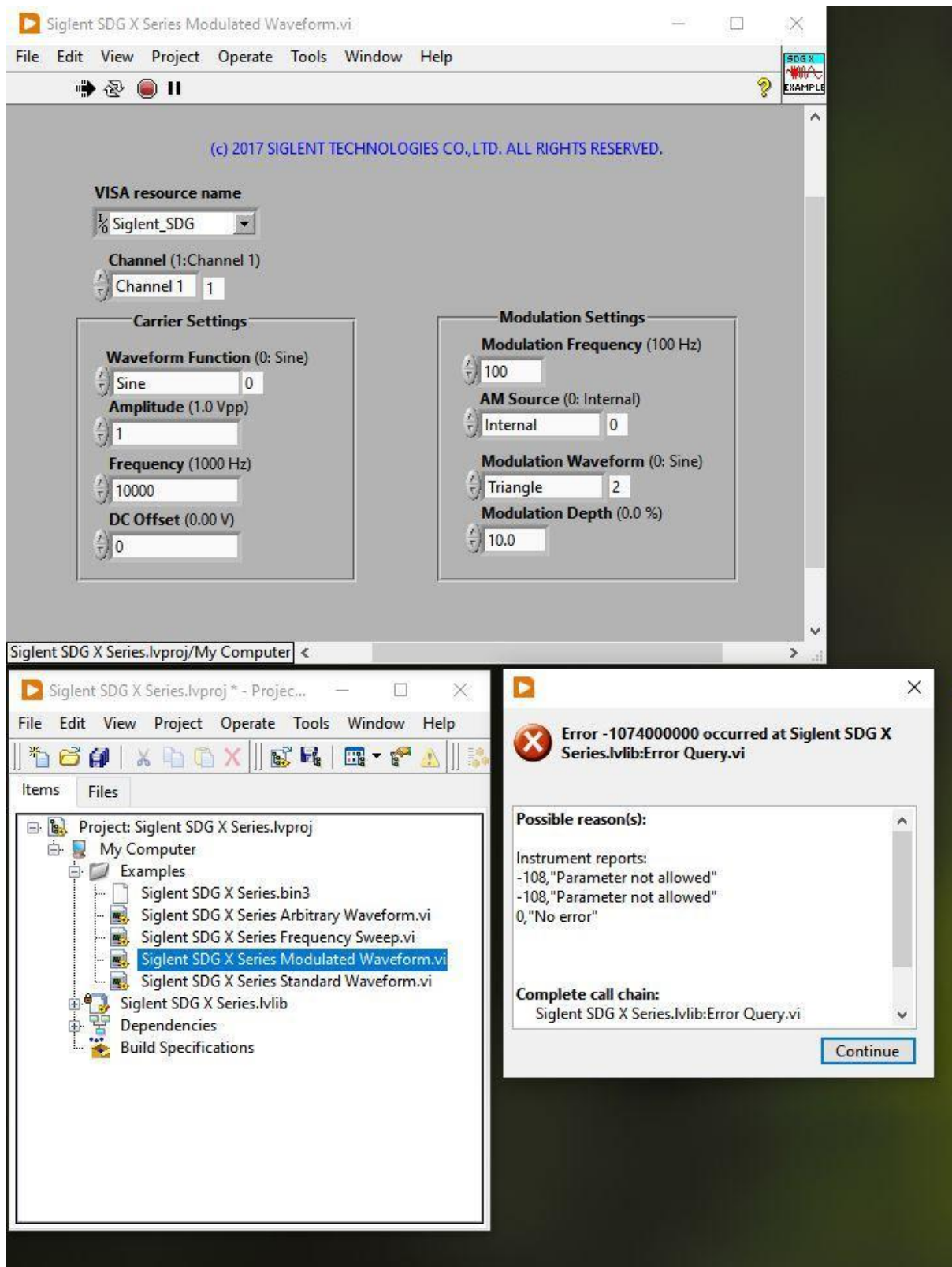


Fig 1.

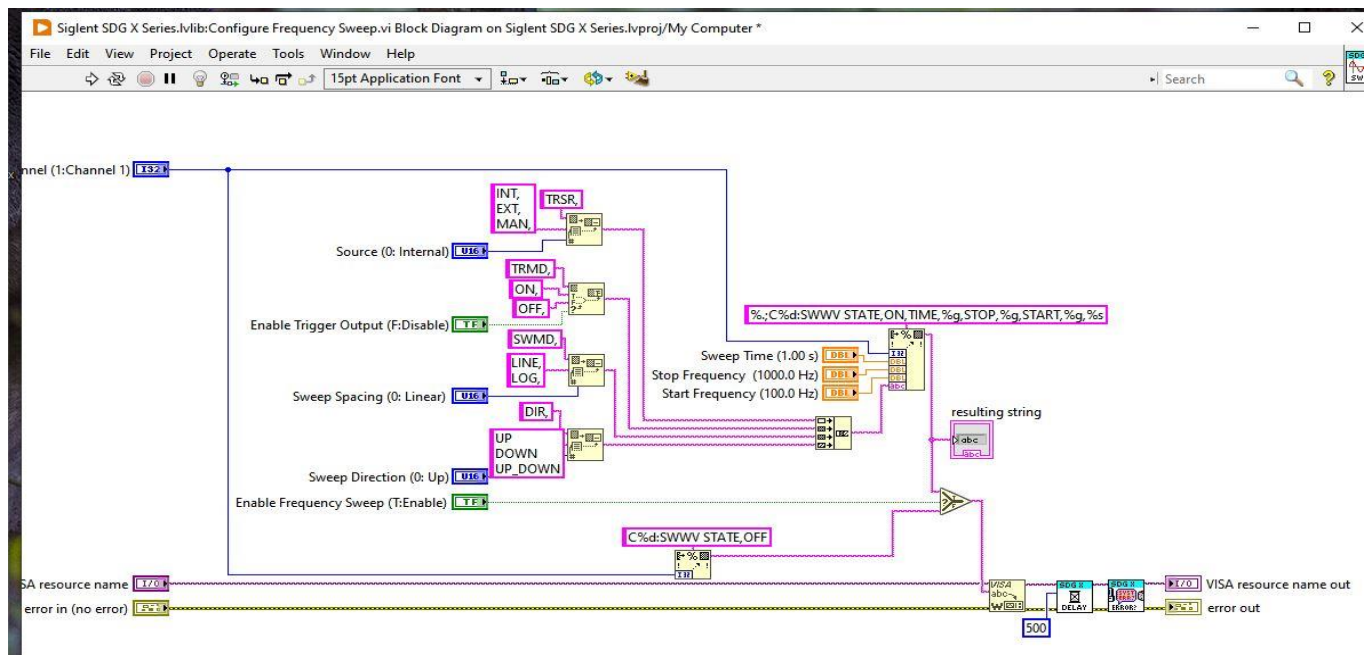


Figure 2. Removing the comma's after UP DOWN UP\_DOWN resolved the problems.