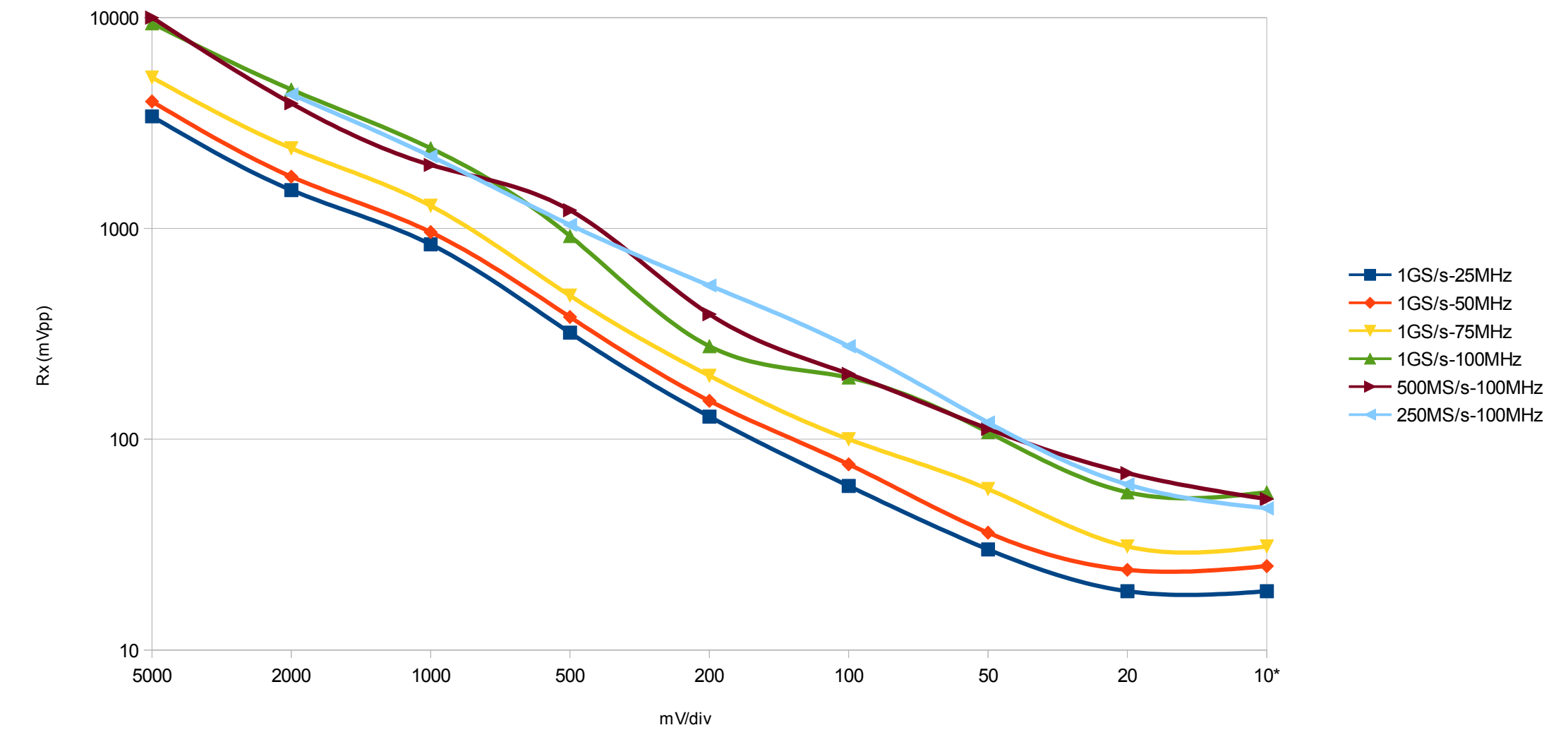


Rigol DS1000Z counter failure threshold, tested using Siglent SDG2000X, HiZ output, 10X probe + BNC adapter (by MrWolf@EEVBlog forum)

mV/div	1GS/s						500MS/s		250MS/s			
	1GS/s-25MHz		1GS/s-50MHz		1GS/s-75MHz		1GS/s-100MHz		500MS/s-100MHz		250MS/s-100MHz	
	Tx (mVpp)	Rx (mVpp)	Tx (mVpp)	Rx (mVpp)	Tx (mVpp)	Rx (mVpp)	Tx (mVpp)	Rx (mVpp)	Tx (mVpp)	Rx (mVpp)	Tx (mVpp)	Rx (mVpp)
5000	3300	3400	4000	4000	5340	5200	9070	9400	9300	10000	Out of range	-
2000	1500	1520	2000	1760	3090	2400	5500	4560	4630	3920	4870	4320
1000	870	840	1100	960	1660	1280	3100	2400	2540	2000	2720	2200
500	320	320	430	380	640	480	1190	920	1590	1220	1320	1040
200	130	128	170	152	260	200	510	276	511	392	670	536
100	60	60	80	76	130	100	261	196	269	204	356	276
50	30	30	40	36	73	58	144	108	146	112	154	120
20	20	19	27	24	40	31	74	56	90	69	78	61
10*	20	19	29	25	40	31	76	56	67	52	61	47



*10mV/div is "fake" range from counter's perspective!