

— Function Details —

●Trigger			Auto
NO	MODE	VALUE	Point
1	DCV	-00.362mVDC	1000
2	DCV	-00.362mVDC	
3	DCV	-00.362mVDC	Interval
4	DCV	-00.362mVDC	0000.015
5	DCV	-00.362mVDC	
6	DCV	-00.362mVDC	Start
7	DCV	-00.362mVDC	
8	DCV	-00.362mVDC	
9	DCV	-00.362mVDC	
Range		Function	Back
Auto 50 mV		DCV	

Data Record Function

Supports manual or auto recording 1000 data points to the internal memory, auto recording time interval can be set from 15 ms to 9999 s

Math

The multimeter can do calculations for you (relative, max, min, average, dBm), saving time and effort

●Trigger			dB/dBm
103.99 dBm			Mode
			On
			Function
			dBm
			Rel R
			50Ω
Range		Function	Back
Auto 5 V		DCV	

●Trigger			MAX/MIN
-00.353 mV DC			Display
			On
			Clear
MAX	MIN	Average	
-00.340mV	-00.357mV	-00.352mV	
Range		Function	Back
Auto 50 mV		DCV	

Dual display supported

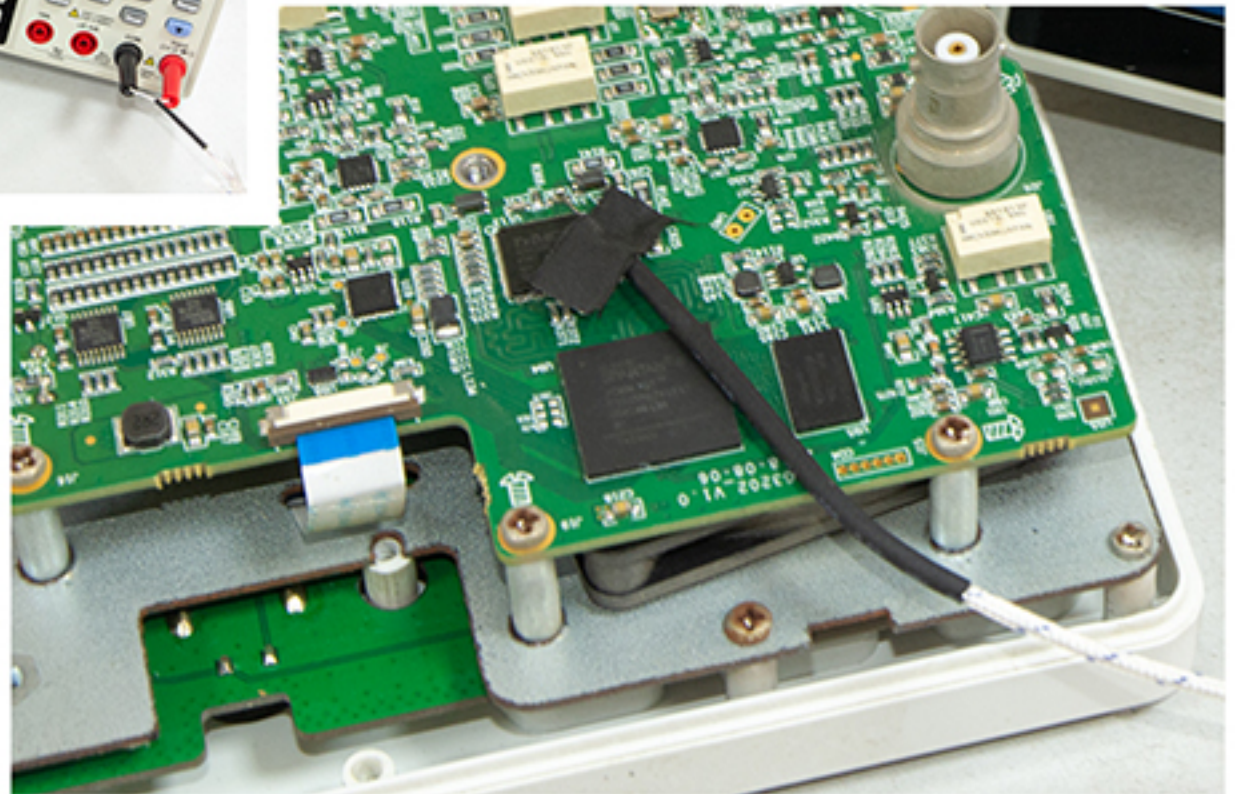
Supports dual display of AC voltage (or current) and frequency measurements

●Trigger			Dual	Switch	Exit	Exit	ACV
0.1377 V AC							Range
							Auto
							Function
							V
							Speed
							Low
50.032 Hz	5 V	Freq					Exit
Range		Function					Rel
Auto 5 V		ACV					Off

Temperature measurement

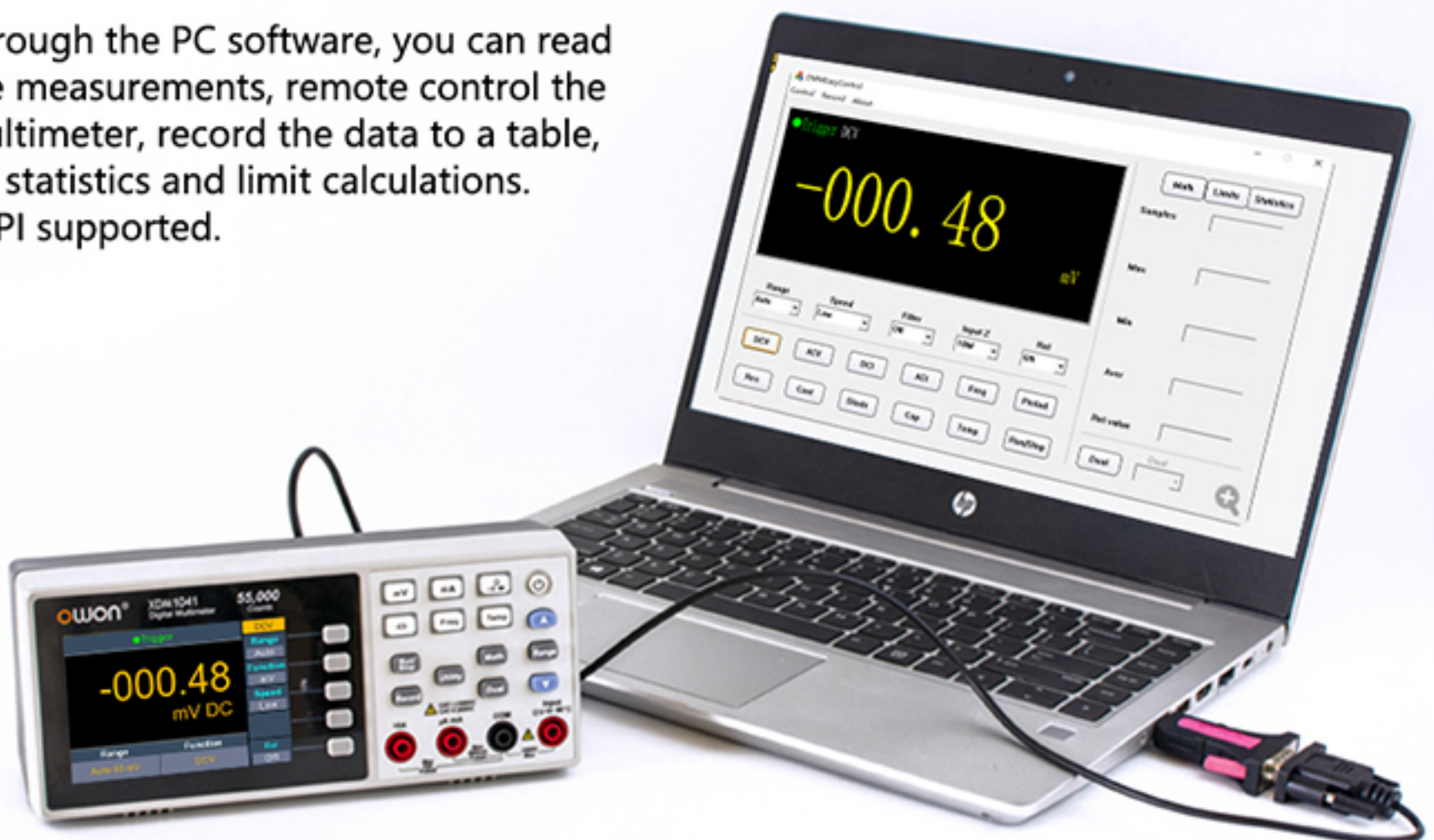


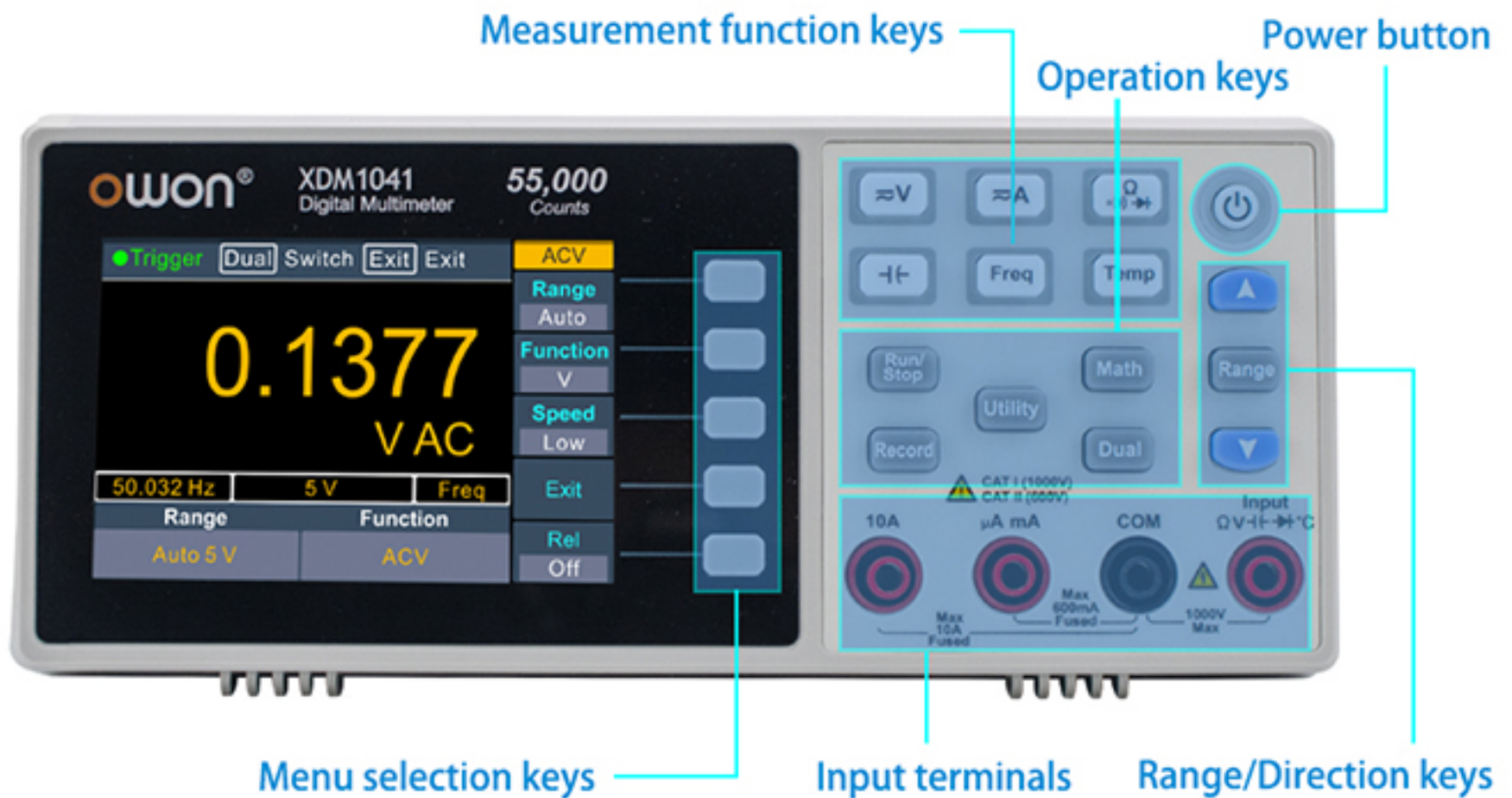
Built-in temperature sensor, auto cold junction compensation, display temperature in $^{\circ}\text{C}$, $^{\circ}\text{F}$ or K, support K-type thermocouple.



Communicate with computer via RS232 port

Through the PC software, you can read the measurements, remote control the multimeter, record the data to a table, do statistics and limit calculations. SCPI supported.





Power connector, accepts AC input voltage of 90 V – 240 V for worldwide usage



	Measurement Range	Resolution	Accuracy: ± (% of reading + LSB)
DC Voltage	50.000 mV	0.001 mV	0.1% + 10
	500.00 mV	0.01 mV	0.05% + 5
	5.0000 V	0.0001 V	0.05% + 5
	50.000 V	0.001 V	0.05% + 5
	500.00 V	0.01 V	0.1% + 5
	1000.0 V	0.1 V	0.1% + 10
True RMS AC Voltage	500 mV – 750 V	20 Hz – 45 Hz	1% + 30
		45 Hz – 65 Hz	0.5% + 30
		65 Hz – 1 kHz	0.7% + 30
DC Current	500 uA	0.01 uA	0.15% + 20
	5000 uA	0.1 uA	0.15% + 10
	50 mA	0.001 mA	0.15% + 20
	500 mA	0.01 mA	0.15% + 10
	5 A	0.0001 A	0.5% + 10
	10 A	0.001 A	0.5% + 10
True RMS AC Current	500 uA – 500 mA	/	0.5% + 20
	5 A – 10 A		1.5% + 20
Resistance	500 Ω	0.01 Ω	0.15% + 10
	5 kΩ	0.0001 kΩ	0.15% + 5
	50 kΩ	0.001 kΩ	0.15% + 5
	500 kΩ	0.01 kΩ	0.15% + 5
	5 MΩ	0.0001 MΩ	0.3% + 5
	50 MΩ	0.001 MΩ	1% + 10
	Measurement Range	Resolution	Accuracy: ± (% of reading + LSB)
Diode	3.0000 V	0.0001 V	1% + 10
Continuity	1000 Ω	0.1 Ω	Adjustable threshold
Frequency	10.000 Hz – 60 MHz	/	± (0.2% + 10)
Capacitance	50 nF – 500 uF	/	2.5% + 10
	5 mF – 50 mF	0.1 Ω	5% + 10
Temperature	K type, PT100		
Max Display	55,000 counts		
Data-logging Function			
Logging Interval	15 mS – 9999.999 S		
Logging Length	1,000 points		
General			
Display Screen	3.7-inch TFT LCD with resolution 480*320		
Dimensions (W×H×D)	200 x 86.5 x 64 (mm)		
Device Weight	Approx. 0.45 kg		

PRODUCT ACCESSORY



1 XDM1041

2 Power Cord

3 Alligator Clip

4 Fuse

5 Multimeter Lead

6 Quick Guide