

# Now you can put a test lab in your tool kit... and still have room for tools.



From now on, you won't have to give up accuracy and high resolution when the job calls for a handheld DMM... now there's Fluke's new 4½-digit 8060A.

This remarkable state-of-the-art multimeter combines portability with performance, and has a unique combination of features that lets you reach beyond traditional handheld DMM applications: 0.04% basic dc accuracy, 10 µV resolution, True RMS AC, frequency measurements, direct reading dB and more. A companion model, the 8062A, makes many of the same measurements at a lower price. Compare their capabilities:

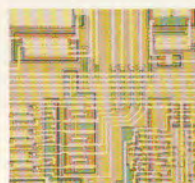
	4½-Digit Resolution	Wideband True RMS AC	Continuity (Audible & Visual)	dBm, Relative dB	Frequency	Relative Reference (Offset)	Autorange Megohms	Conductance	Constant Current Diode Test	Self-Diagnostics	Basic DC Accuracy	U.S. List Price
8060A	• 100 kHz	• 200 kHz	• • • • •	• • • • •	• • • • •	• • • • •	• • • • •	• • • • •	• • • • •	• • • • •	0.04%	\$349
8062A	• 30 kHz	• • • • •	• • • • •	• • • • •	• • • • •	• • • • •	• • • • •	• • • • •	• • • • •	• • • • •	0.05%	\$279

For more information and the name of the Fluke distributor, sales office or representative nearest you, call 1-800-426-0361. If you prefer, use the fast response coupon.



----- Fast-Response Coupon -----

Advanced Fluke LSI technology produced this custom CMOS integrated circuit which is the heart of 8060A's capabilities.



For applications not requiring frequency and dB functions, we offer the companion model 8062A with full-scale 4½-digit resolution and True RMS measurements to 30 kHz.



IN THE U.S. AND NON-EUROPEAN COUNTRIES:  
**John Fluke Mfg. Co., Inc.**  
P.O. Box C9090, M/S 250C  
Everett, WA 98206  
(206) 356-5400, Tlx: 152662

IN EUROPE:  
**Fluke (Holland) B.V.**  
P.O. Box 5053, 5004 EB  
Tilburg, The Netherlands  
(013) 673973, Tlx: 52237

☐ Please send me information on Fluke's new 8060A and 8062A DMM's.

Name \_\_\_\_\_  
Title \_\_\_\_\_ Mail Stop \_\_\_\_\_  
Company \_\_\_\_\_  
Address \_\_\_\_\_  
City \_\_\_\_\_ State \_\_\_\_\_ Zip \_\_\_\_\_  
Telephone ( ) \_\_\_\_\_ Ext. \_\_\_\_\_

© 1982 John Fluke Mfg. Co., Inc. All rights reserved.

Ad No. 2501-8060