

; Stückliste=D:_Elektronik\Eigenprojekte\Logic Probe MSO5000\MSO5000_Logic Probe_3.0.T3001

; Datum=25.September.2021 16:43

; Autor= Peter Lampe

;

Pos	Number	Name	Value	Housing
1	2	C1,C2	MLCC 10µF/10V	0805
2	5	C3,C4,C5,C6,C7	MLCC 100nF/25V	0402
3	1	D1	SMD-LED gn	0805
5	4	IC1,IC2,IC3,IC4	LVDS-Driver-4channel SN65LVDS391D	SOIC16
6	1	IC5	LDO MC3375-3,3T3G	SOT223
7	2	K1,K2	Input Haeder	Pin Haeder 2x8; Pitch 2,54
8	1	K3	Output Haeder	Pin Haeder 2x25; Pitch 2,54
9	33	R1,R2,R3,R4,R5,R6,R7,R8,R9,R10,R11,R12,R13,R14,R15,R16,R17,R18,R19,R20,R21,R22,R23,R24,R25,R26,R27,R28,R29,R30,R31,R32,R33	SMD-Resistor 100	0603
10	1	R34	SMD Resistor 220	0603
11	1	R35	SMD Resistor 10k	0603

R35 100nF C7 10k

K3

1

K1

100 R1
100 R2
100 R3
100 R4
100 R5
100 R6
100 R7
100 R8

100nF C3
IC1
SN65LVDS391D

100nF C4
IC2
SN65LVDS391D

100nF C5
IC3
SN65LVDS391D

100nF C6
IC4
SN65LVDS391D

R25 100
R24 100
R33 100
R32 100
R23 100
R22 100
R31 100
R30 100
R21 100
R20 100
R29 100
R28 100
R19 100
R18 100
R27 100
R26 100

+

1

1

K2

100 R9
100 R10
100 R11
100 R12
100 R13
100 R14
100 R15
100 R16

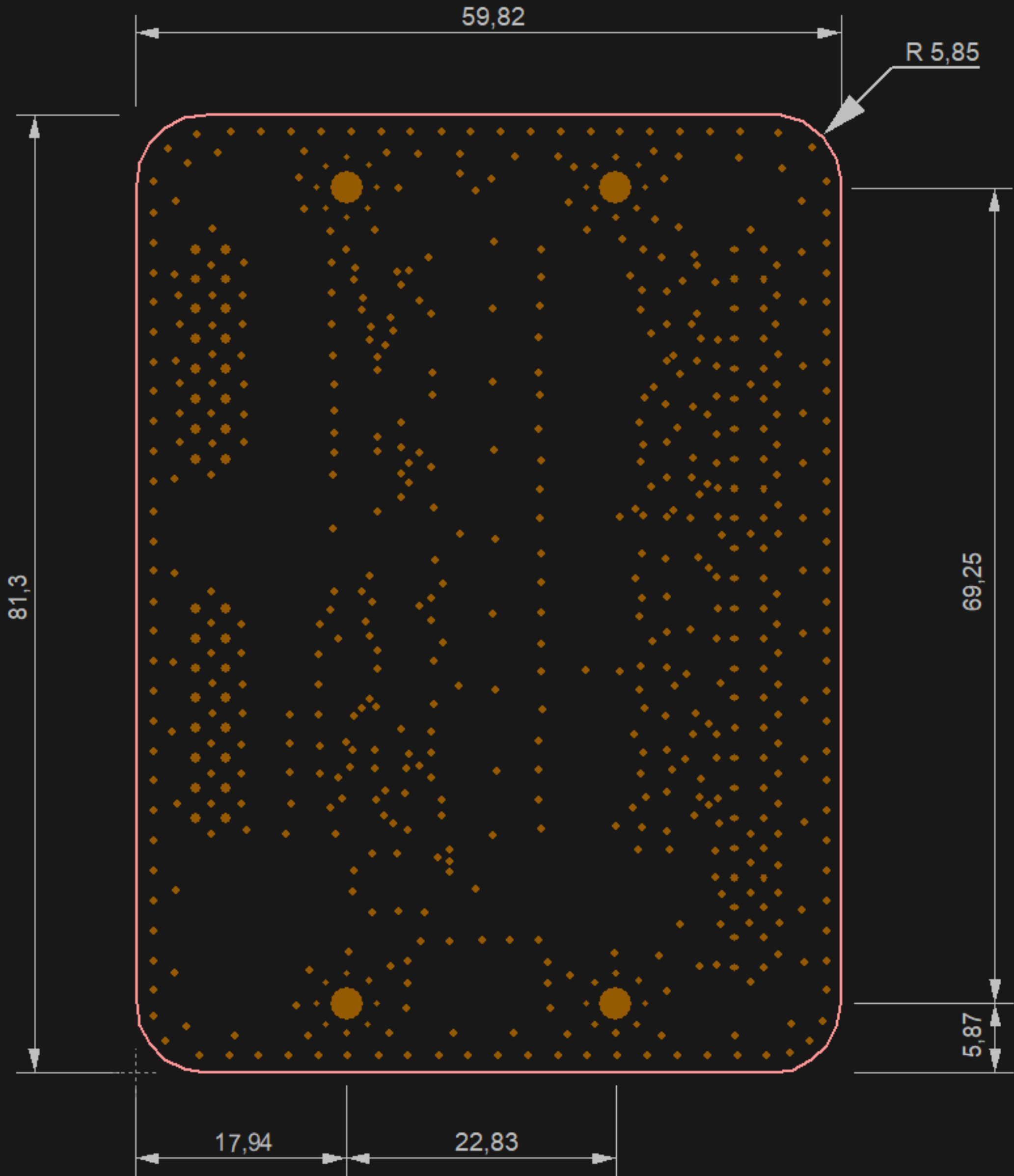
R34 220 D1 SMD-LED gh C2 10µF / 10V C1 10µF / 10V

IC5
MC3375-3,3T3G



R17 100

Logic Probe
MS05000
LVTTTL/TTL
V3.0
10/2021



Logic Probe
MS05000
LVTTTL/TTL
V3.0
10/2021

R34 220
D4 SMD-LED gn
C1 10pF
V 10V
SOT223
MC333T3G

R35 100nF
C7 10k

K1

R1
R2
R3
R4
R5
R6
R7
R8

IC1
SN65LVDS391D
IC2
SN65LVDS391D
IC3
SN65LVDS391D
IC4
SN65LVDS391D

K2

R9
R10
R11
R12
R13
R14
R15
R16

C3
C4
C5
C6

R25 100
R24 100
R33 100
R32 100
R23 100
R22 100
R21 100
R20 100
R29 100
R28 100
R19 100
R18 100
R27 100
R26 100



R17 100

