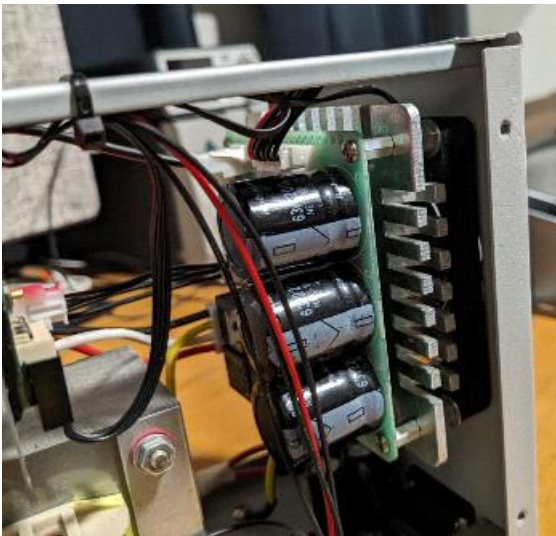
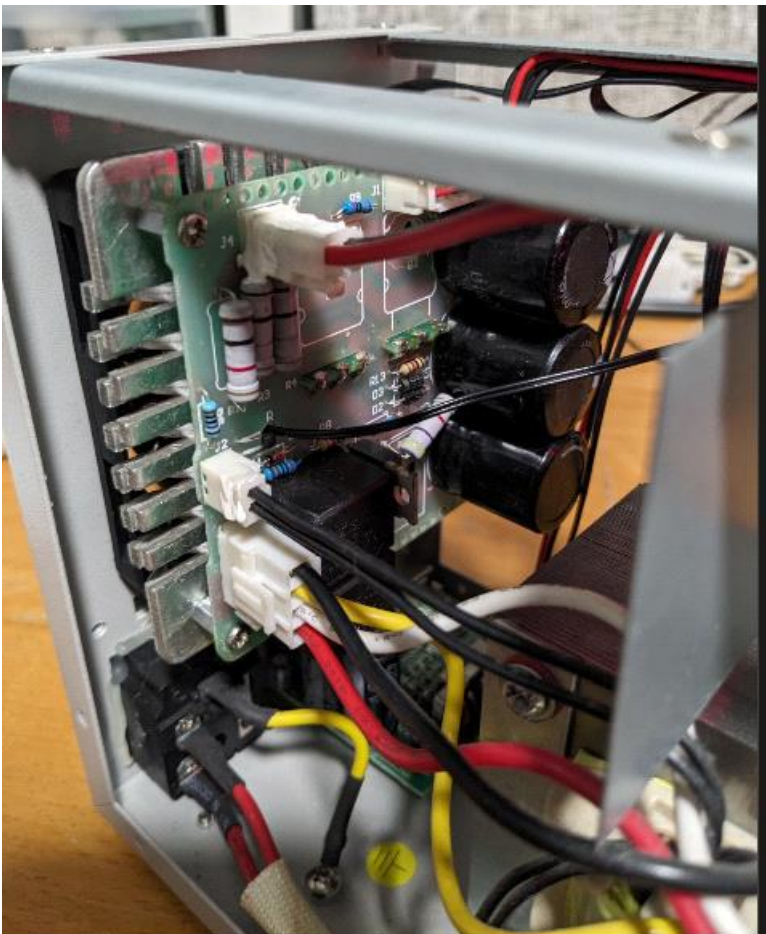


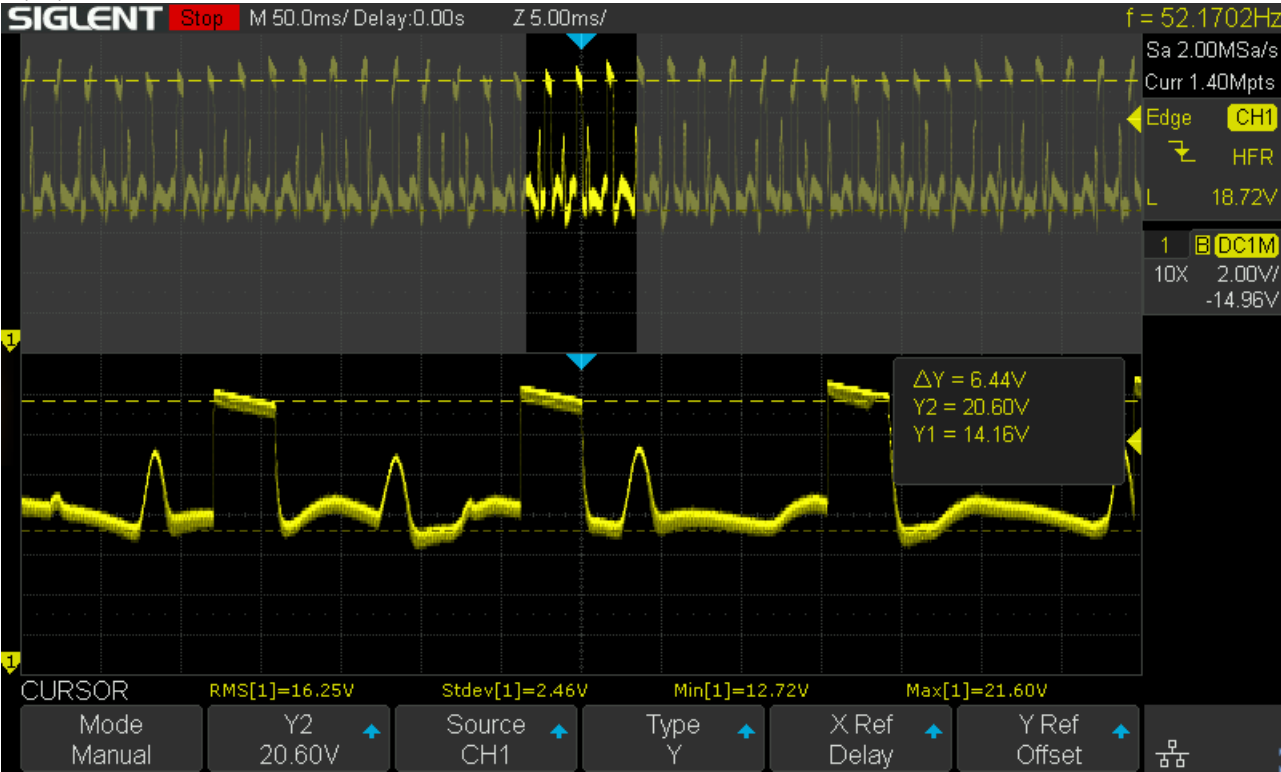
glued the pwm fan controller to the vertical plate above the transformer



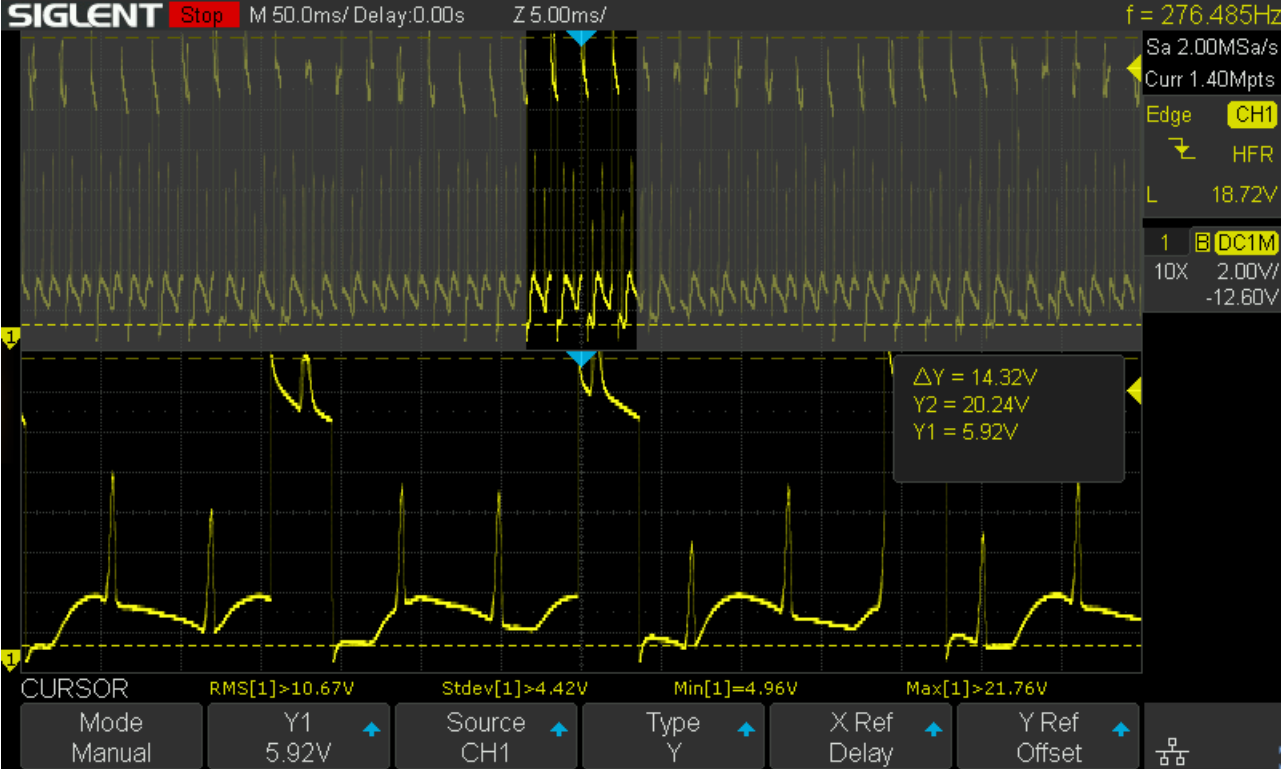


placed the thermistor in the hole of the over temperature thermistor on the power board

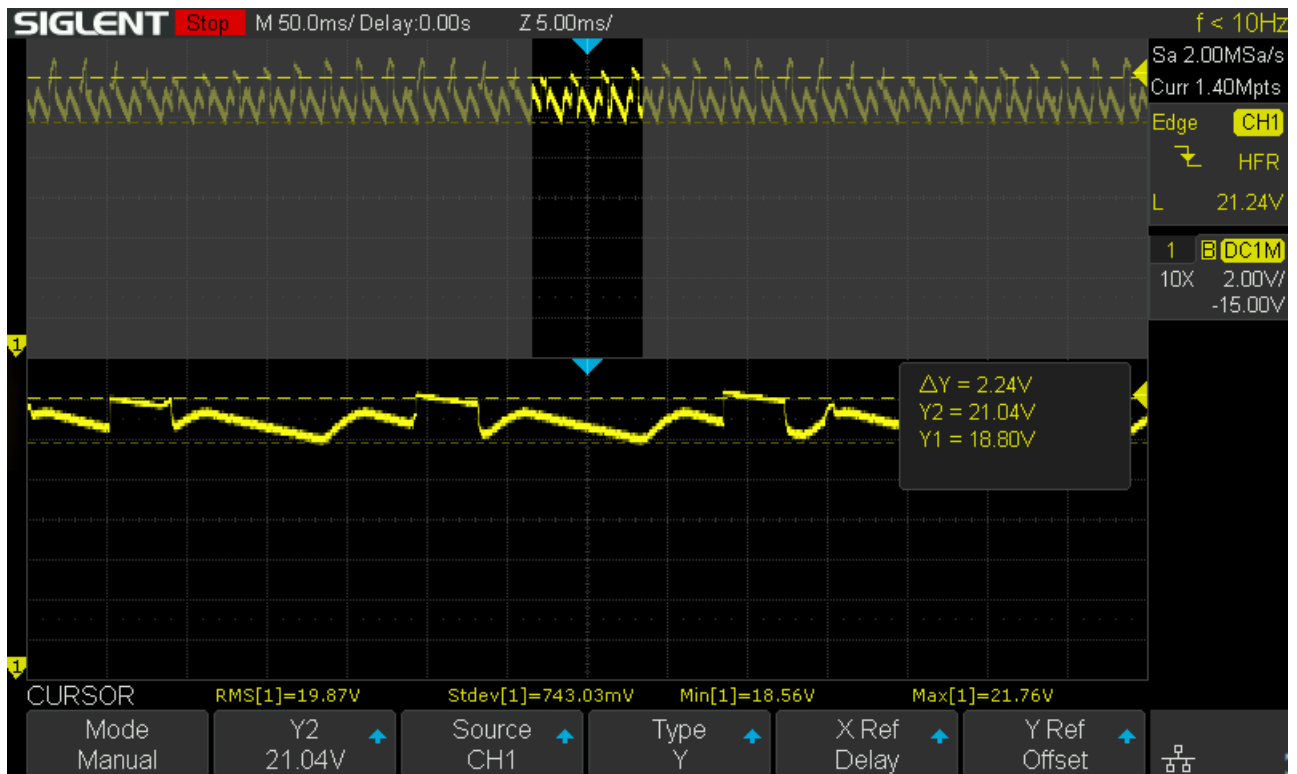
Fan supply measurement with fan controller and fan  
- fan spinning at low speed  
29/02/2024 13:48



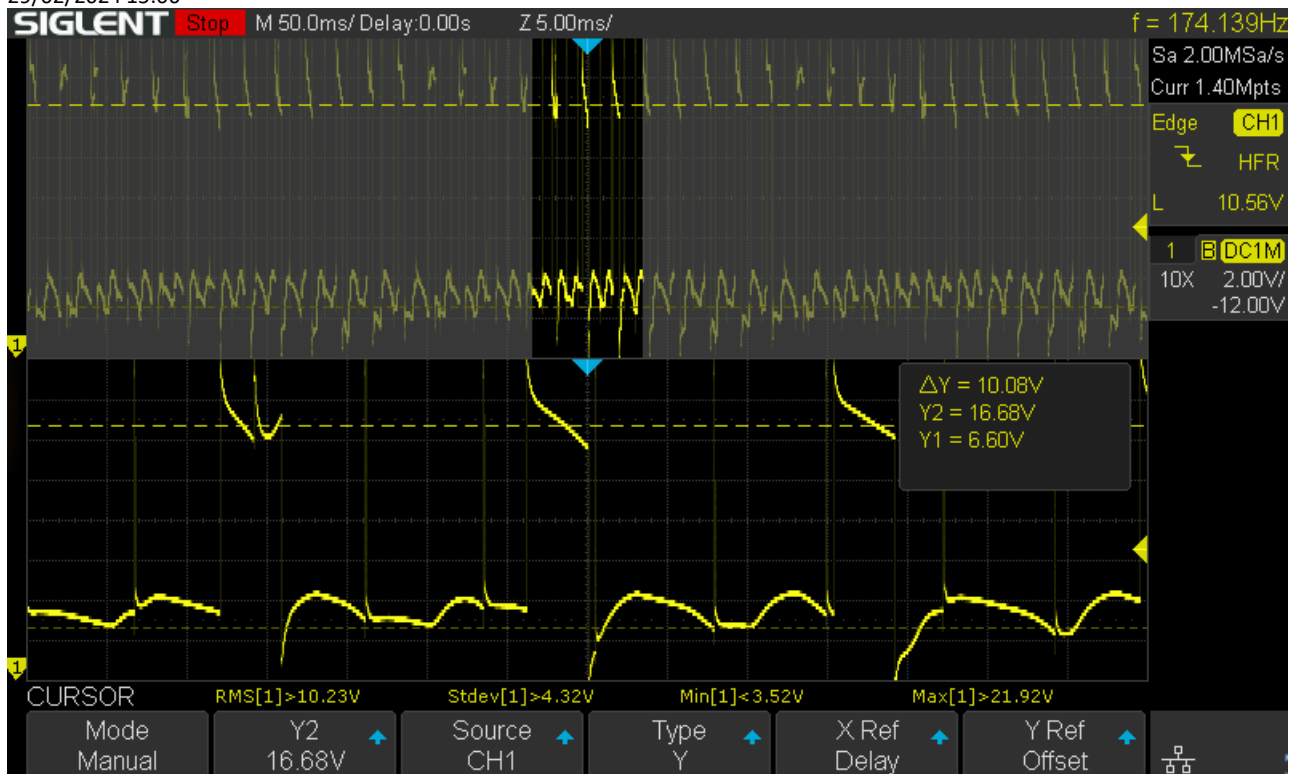
Fan supply measurement with fan controller and fan  
- fan spinning at HIGH speed  
29/02/2024 13:56



Fan supply measurement with fan controller without fan  
29/02/2024 13:59



Original fan  
29/02/2024 15:06



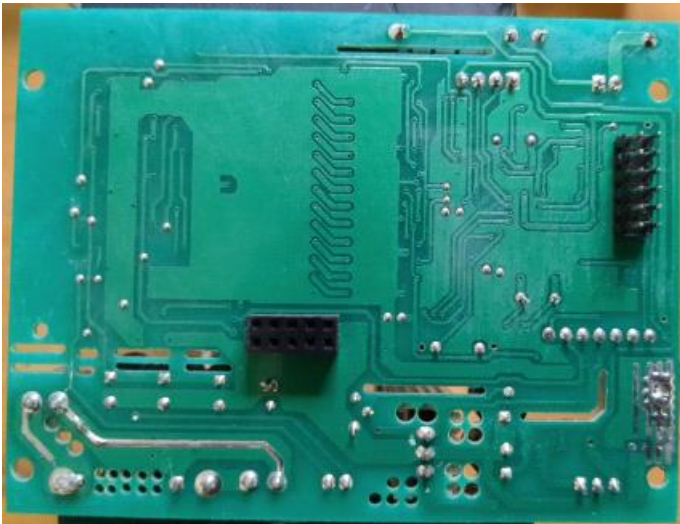
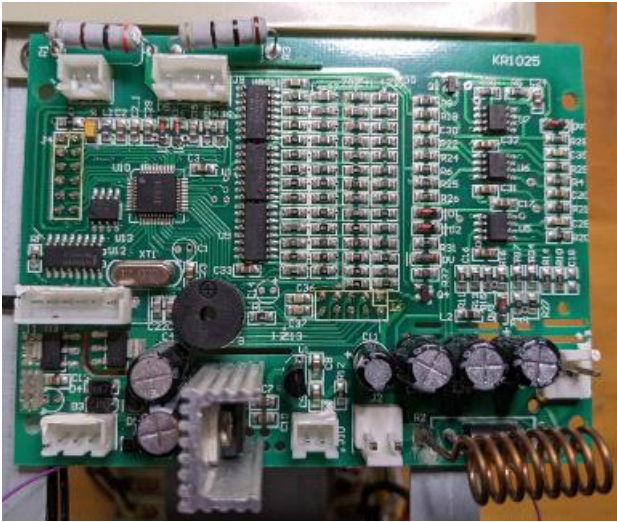
audio-rec1  
original fan on desk with weight on it;  
original supply

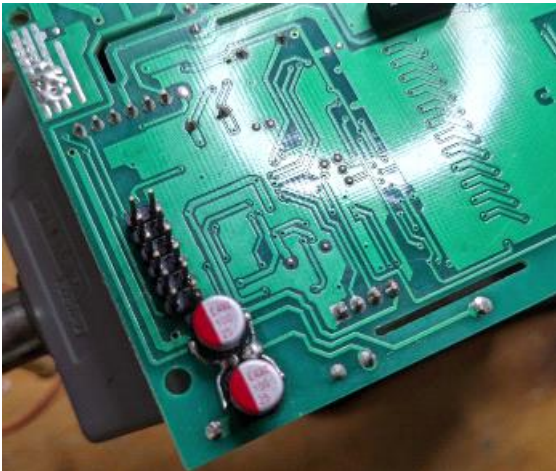
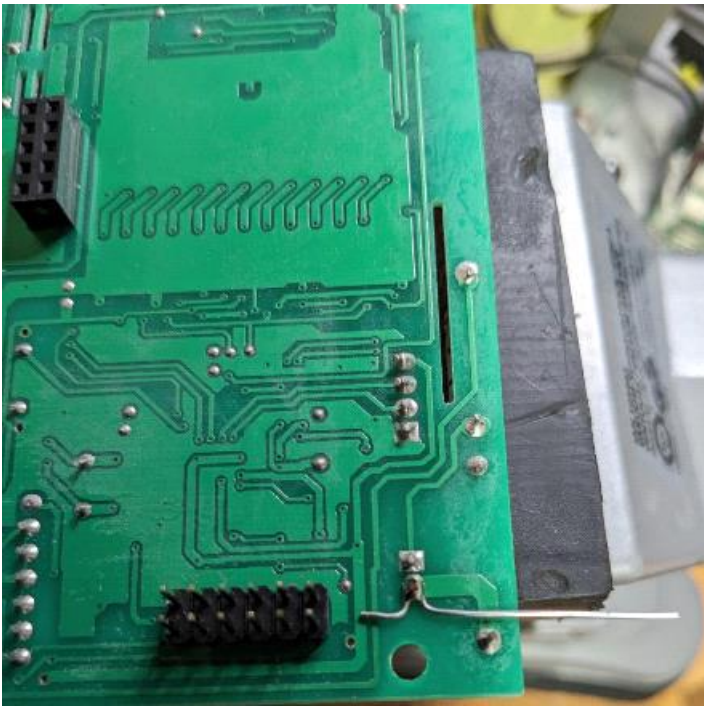
audio-rec2  
original fan on desk with without weight on it  
original supply



Difficult to hear the difference, no matter no need to put it here it improved. its better to view the waveforms

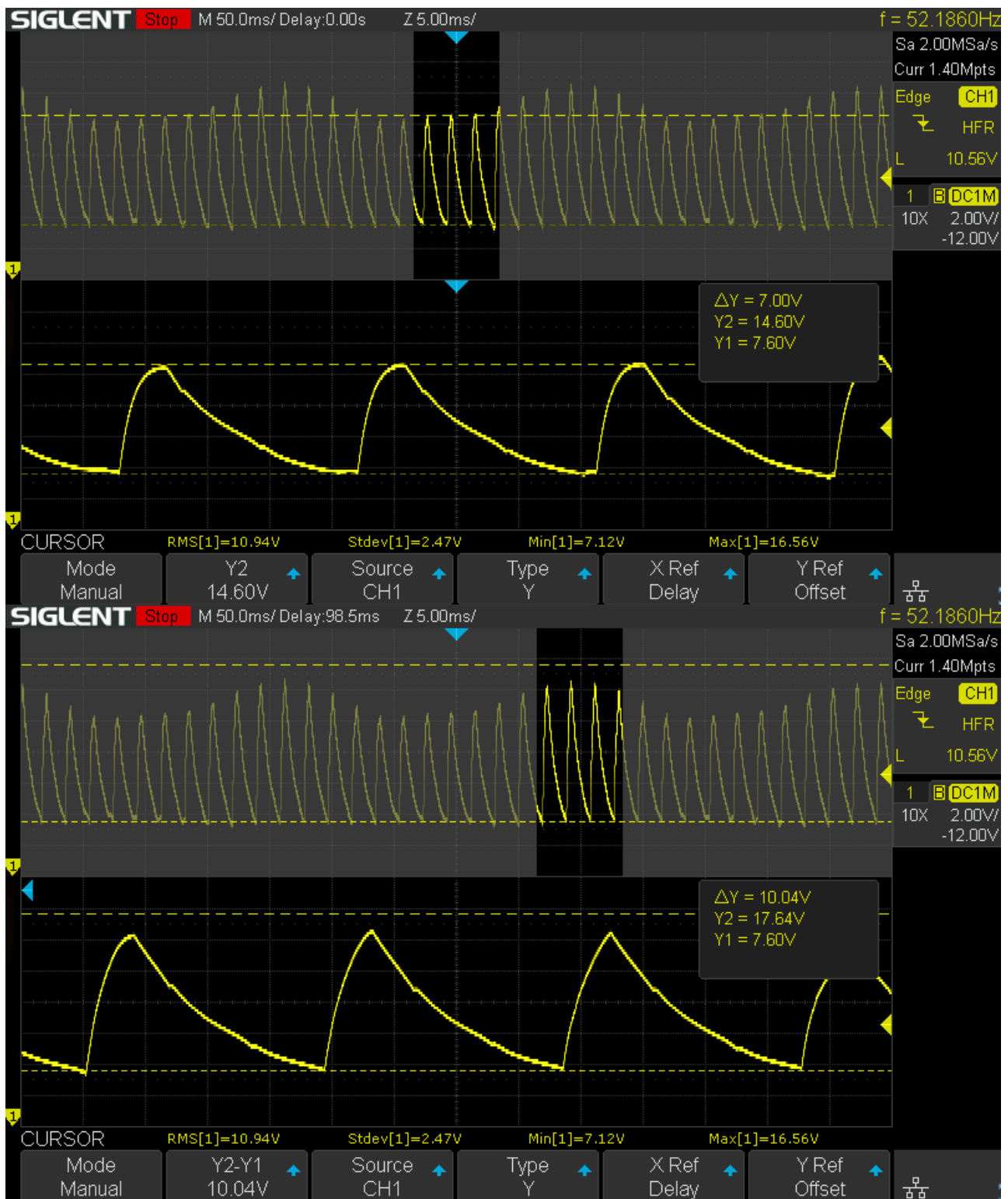
### Adding smoothing capacitors



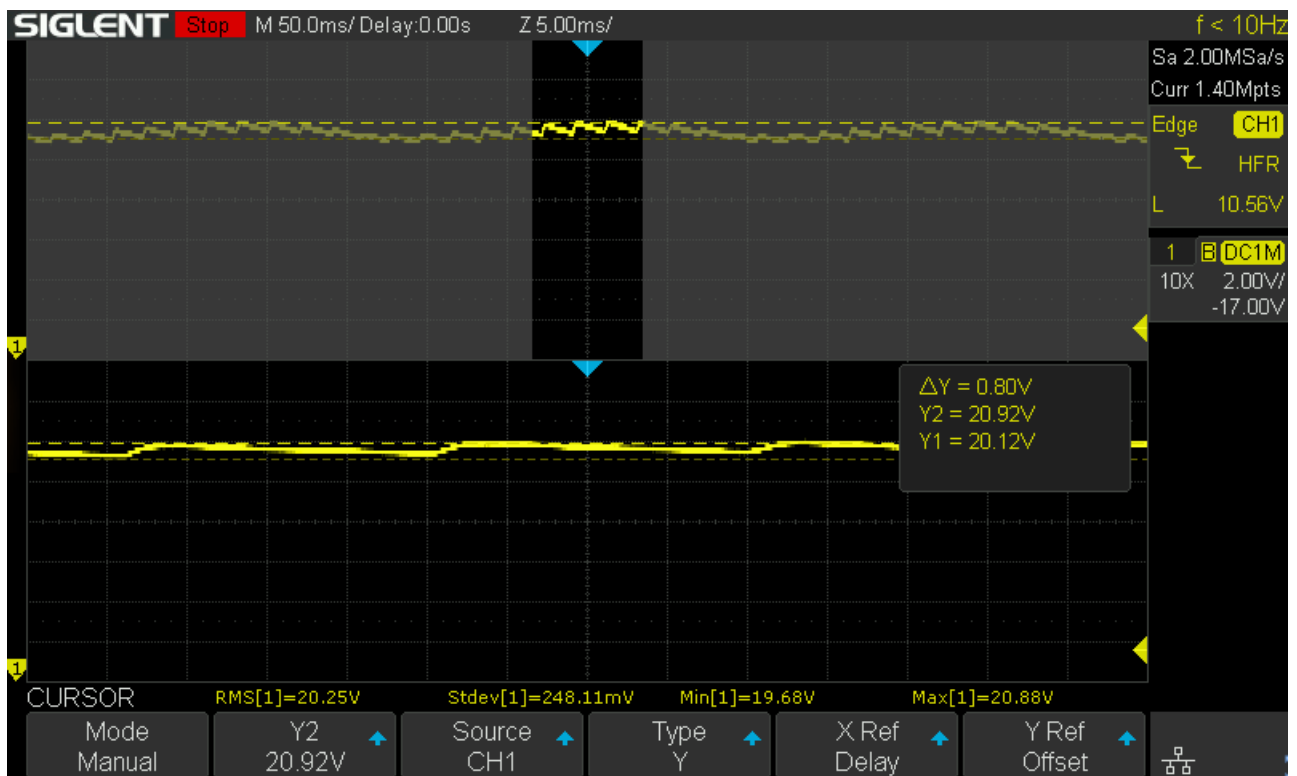


\* added 200uF capacitor to smooth the supply

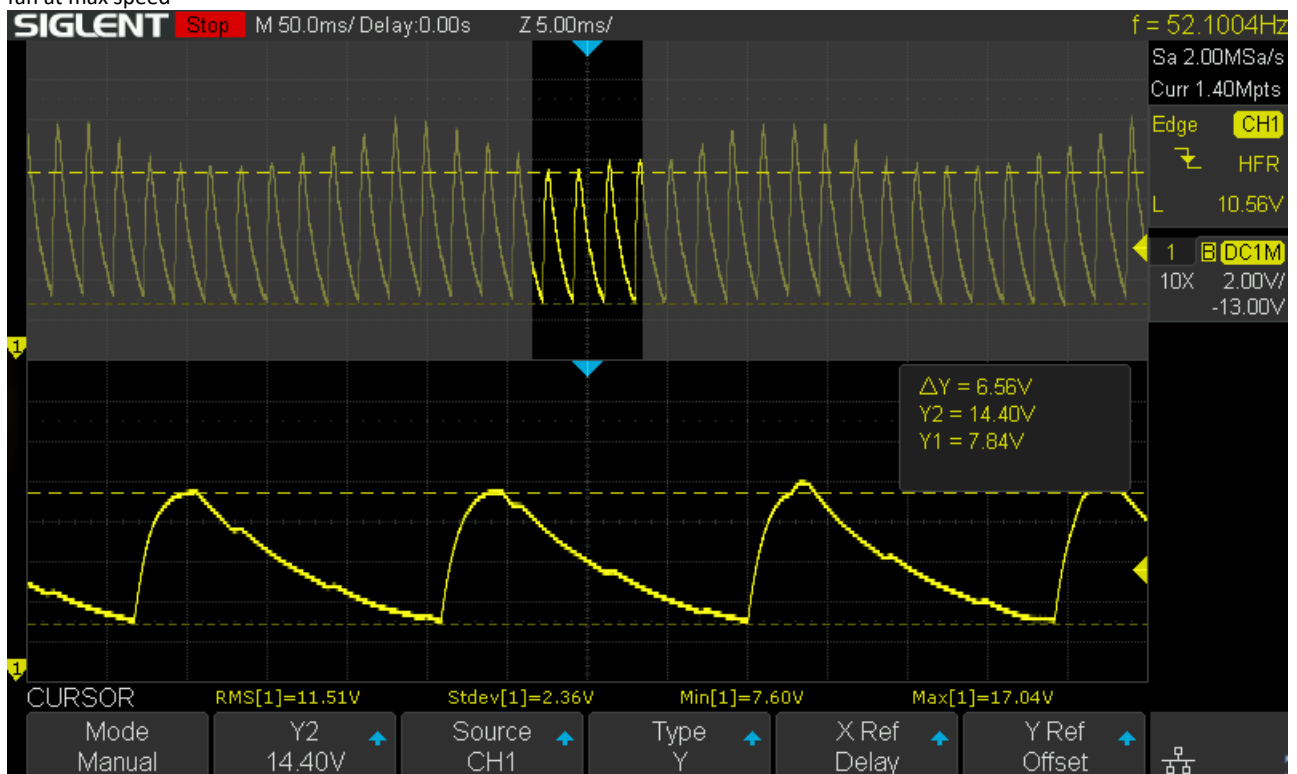
Original fan +200uF



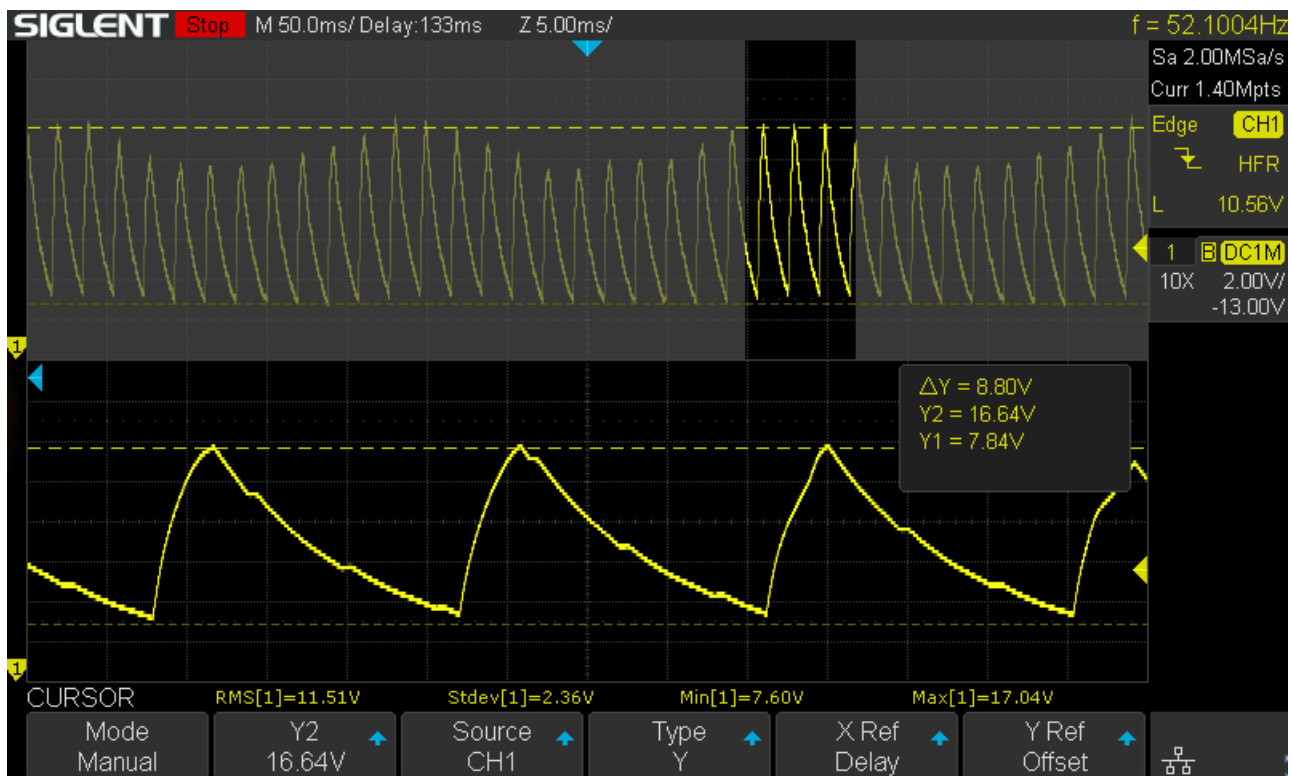
Fan supply measurement with fan controller without fan +200uF



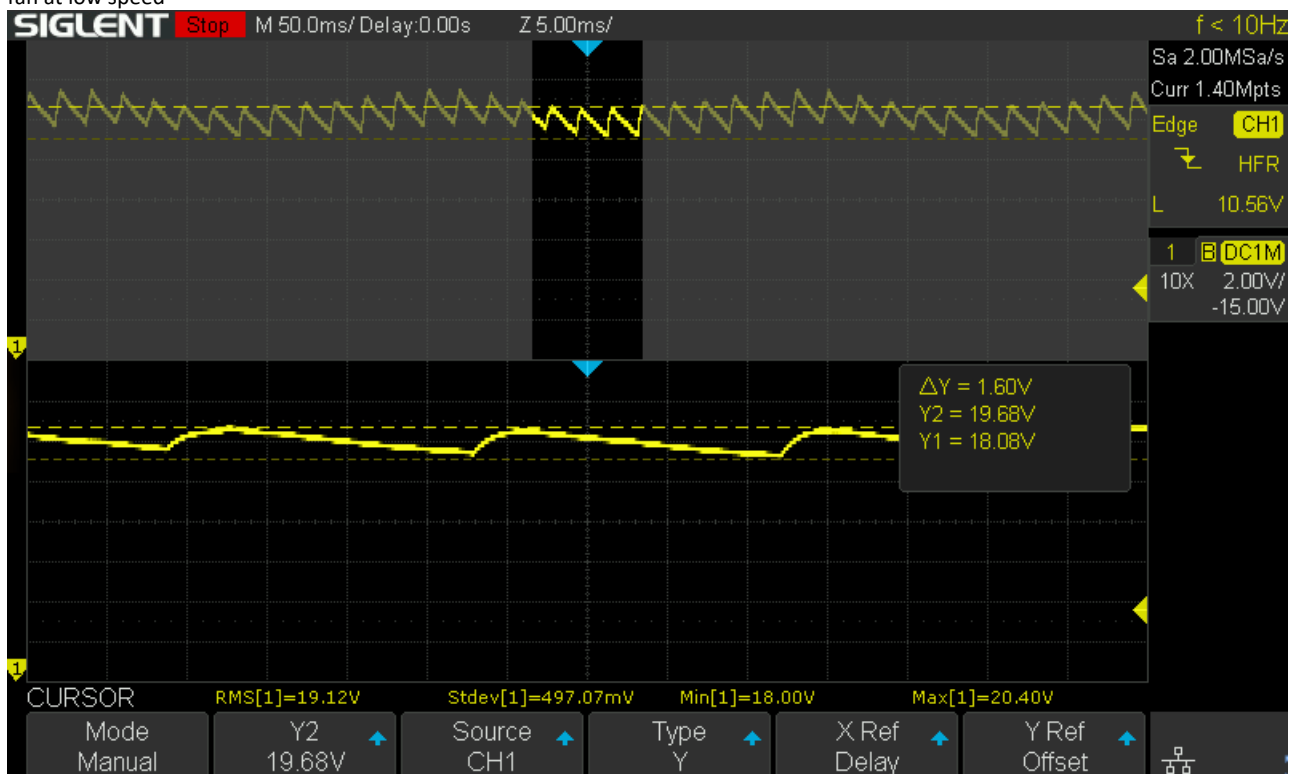
Fan supply measurement with fan controller and fan +200uF  
fan at max speed







Fan supply measurement with fan controller and fan +200uF  
fan at low speed



Supply ripple with fan configured at standby speed

Fan controller config:

\*There are 19 step settings steps in total (found by changing speed from max to min)

Configured at 5 (press button 5 times with pause in between, starting from minimum speed setting)

