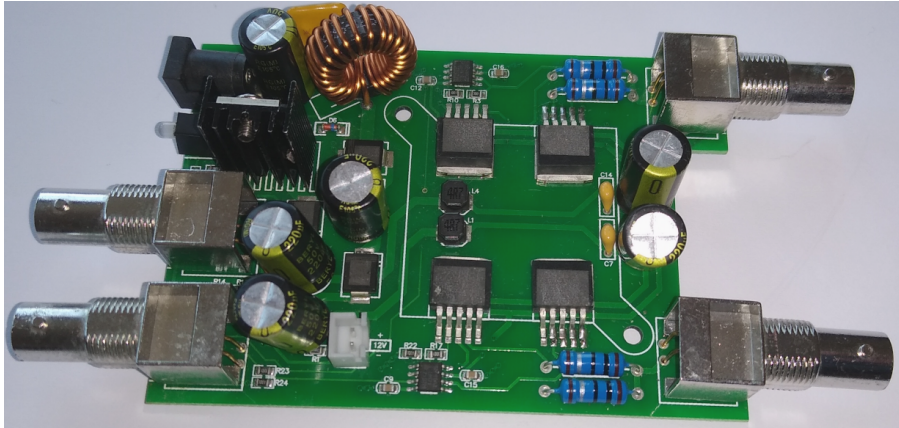
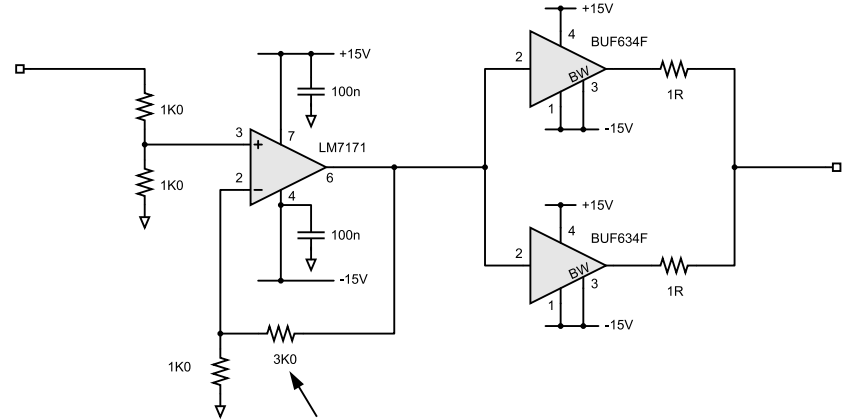


THIS UNIT HAD SIGNIFICANT NOISE ON CH1 DUE TO COUPLED NOISE FROM FAN POWER TRACES. FIXED THIS WITH 100nF SM0603 ON THE FAN CONNECTOR PINS ON UNDERSIDE OF PCB

ALL 1uF CERAMIC UNLESS STATED OTHERWISE  
ALL 220uF 50V



PCB SHOWN WITH CLIP-IN HEATSINK REMOVED



LM7171 DATASHEET RECOMMENDS 2pF CAPACITOR ACROSS THE FB RESISTOR

CHANNEL AMPLIFIER

ONE CHANNEL SHOWN, SECOND CHANNEL IS IDENTICAL

**JUNTEK® DPA-2698**  
**LAB AMPLIFIER, DUAL CHANNEL, 6dB (x2) GAIN**  
REVERSE ENGINEERED SCHEMATIC

REVISION	B	DATE	27AUG2021	SHEET	1	OF	1
----------	---	------	-----------	-------	---	----	---