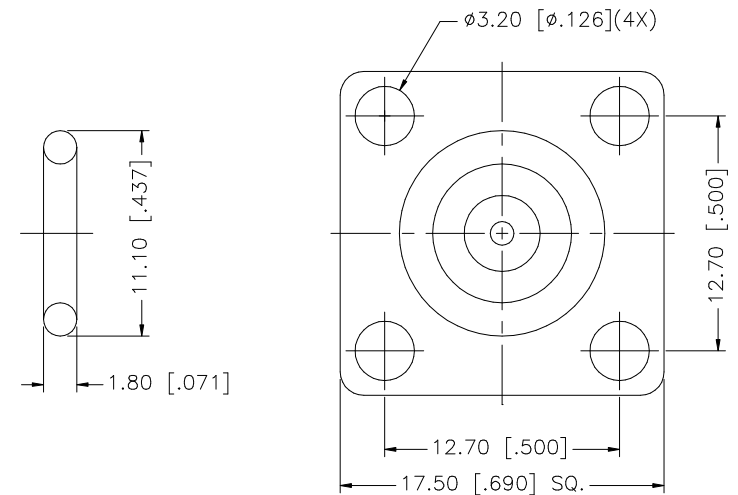
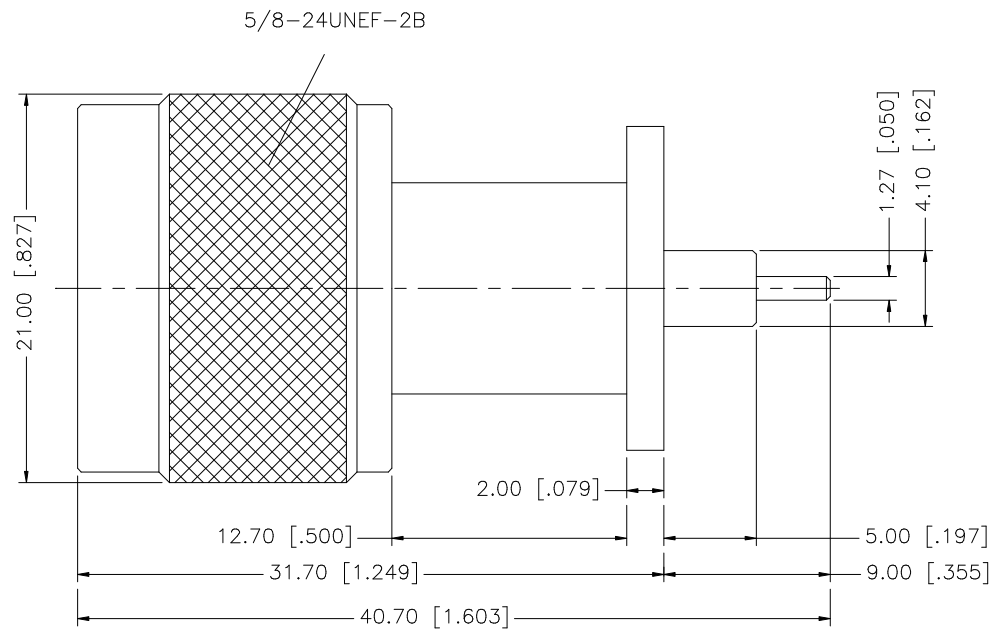


REV.	DATE	DESCRIPTION
NC	05/12/00	INITIAL RELEASE
A	06/12/07	UPDATE DRAWING FORMAT



				<div>UNLESS OTHERWISE SPECIFIED DIMENSIONS ARE IN MILLIMETERS. DIMENSIONS IN [] ARE IN INCHES AND FOR CUSTOMER REFERENCE ONLY.</div> <div>UNLESS OTHERWISE SPECIFIED TOLERANCES FOR MILLIMETERS ARE: 0.5 – 8mm ± 0.20mm 8 – 30mm ± 0.40mm 30 – 120mm ± 0.50mm</div> <div>UNLESS OTHERWISE SPECIFIED TOLERANCES FOR INCHES ARE: .020 – .315 = ± 0.007" .315 – 1.180 = ± 0.015" 1.180 – 4.724 = ± 0.020"</div> <div>DO NOT SCALE DRAWING</div>	APPROVALS		DATE		<h1>Amphenol Connex</h1>										
8					DRAWN	G.R.S.	06/12/07							PART DESCRIPTION N PANEL RECEPTACLE PLUG (EXTENDED TEFLON)					
7					CHECKED														PART NO. 172260–10
6					ISSUED				DWG. NO. 172260–10.DWG										
5					SHEET	1 OF 1								REV. A		SIZE A	SCALE NA		
4	GASKET	SILICONE	RED		1														
3	CONTACT PIN	BRASS	GOLD		1														
2	INSULATOR	TEFLON	NATURAL		1														
1	BODY	BRASS	NICKEL		1														
	DESCRIPTION	MATERIAL	FINISH		QTY	C:/172/172260–10.DWG													

Mouser Electronics

Authorized Distributor

Click to View Pricing, Inventory, Delivery & Lifecycle Information:

[Amphenol:](#)

[172260-10](#)