

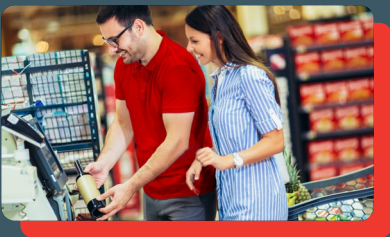


Our Biometrics Range
The next generation of
identification technology

Leading Biometric Solutions

Innovative Technology strives to make commercial biometric technologies affordable and easy to use.

Our range of non-intrusive biometric products can benefit a vast number of industries. Customise facial recognition and age verification functions to fit your application, whether you're looking to:



Support your staff with age-verification



Automate player protection in gaming locations



Control access to sensitive areas or buildings



Develop more targeted digital marketing campaigns on your premises



Automate photo ID verification

We're proud to have built our own, state-of-the-art neural networks and advanced algorithms which power these technologies - predominately offline and with instant results.

Our Technology

In order to achieve our core objective of providing affordable and easy-to-use biometric technology, own bespoke solutions and technologies. Our products are powered by:



Proprietary Algorithms

Designed and fine-tuned to recognise faces and age with remarkable accuracy whilst working offline on local hardware.

We do not use publicly available databases favouring our own extensive dataset to reduce gender and racial bias.



Edge Solution

Our edge solution gives customers an immediate response. Both age verification and facial recognition technology processes are performed locally giving a more reliable output and faster response. An internet connection is only required for initial set up and updates which are free for the first 12 months.



Unique Fraud Detection

Our range of biometric products uses single-image passive liveness detection. The same frame is used for facial matching as for liveness checking, resulting in minimal processing and faster responses. By not having a separate dedicated method for spoofing, fraudsters have no information on how to fool the system, making it more secure. We have included anti-spoof technology as standard across the biometrics range.



ICU Lite



Transform your existing machines with automated age estimation.

ICU Lite provides age estimation technology in a compact, plug-in device. Integrate into a machine to automate age-restricted sales and services.

Combine with any USB camera for a completely offline age estimation solution that gives immediate results.



**Prevent
underage
sales**



**Enhances customers'
experience and
increases throughput**



**Unlimited age
checks for a
one-off fee**

How it works...



Install the system

Simply plug ICU Lite into your host machine e.g. a self-service checkout, gaming machine or kiosk.



Camera detects person

Works with any USB camera for a completely offline age estimation solution that gives immediate results.



Sale approved or manual identification check required

The host machine will be notified of the age verification check and either continue the transaction or advise the user to seek a manual ID check to override the system.



Conforms to
CHALLENGE 25



Did you know...

Designed for use in Challenge 25 scenarios, ICU Lite has undergone independent testing by the Age Check Certification Scheme (ACCS).

The findings indicate that ICU Lite, on average, underestimates age by just 0.19 years.



No internet
required



No recurring
fees

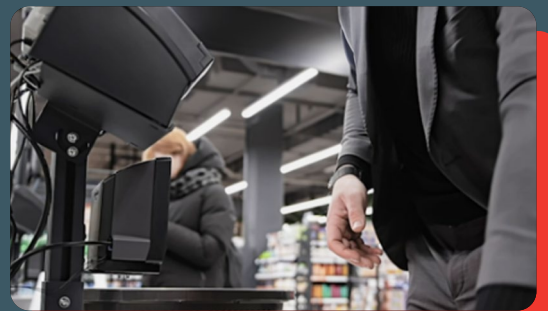


World-leading
accuracy

Why ICU Lite?

One suggested use for the ICU Lite is to increase the capabilities of your premise's self-service checkouts. Installing ICU lite to these terminals offers a host of benefits including:

- Protect children from harm
- Shield staff from abuse
- Prevent public nuisance and disorder
- Speed up transactions
- Efficient use of resources
- Offline solution
- Unlimited age estimations without recurring fees



ICU Pro



ICU Pro is a biometric solution that uses facial analysis to control access to buildings and allow hygienic contactless entry.

Powered by our edge solution, our complete intelligent system ensures customers receive immediate responses and conducts processes locally. An internet connection is only necessary for setup & updates. ICU Pro is an accurate (99.88% LFW*) and affordable facial recognition system. Our non-intrusive spoof detection gives the highest level of security, constantly monitoring users non-intrusively.

How it works...



Upload images to the database

Authorised images are first added to the database.



Images are converted to FaceIDs

Images are transformed into FaceIDs, which are strings of numbers used to represent real faces. It's important to note that once an image is converted to a FaceID, it cannot be reverted into a recognisable face. This preserves the users' anonymity.



Camera detects person

A camera connected to the ICU Pro will detect a person attempting to gain entry. ICU Pro converts that image into a FaceID and compares it with the database.



Access will be granted or denied

If a match occurs, the person is authorised and will be granted access. If there is no match, doors will remain closed.



Did you know...

Facial analysis is a non-contact form of biometrics which can be used to identify and allow access for authorised persons. It can be used to replace or enhance the use of RFID cards/keys etc.

Why ICU Pro?

The primary purpose of the ICU Pro system is to provide robust but affordable access restrictions to your site. Implementing it across secure facilities ensures that:

- Only authorised persons can enter
- Contactless entry - minimising key misplacements and losses
- Reduce costs - compared to manned and multi-part solutions
- Efficient use of resources - existing staff can be deployed elsewhere





MyCheckr

MyCheckr performs anonymous age estimation, to assist with the sale of age-restricted goods.

It is an affordable, all-in-one solution that assists with the sale of age-restricted goods by helping the server make informed decisions during the age-check process.

MyCheckr can be integrated with host machines (e.g. self-checkouts).

How it works...



Prevent underage sales

Serves as a deterrent to prevent underage customers from trying to buy age-restricted items, equipped with standard spoof detection.



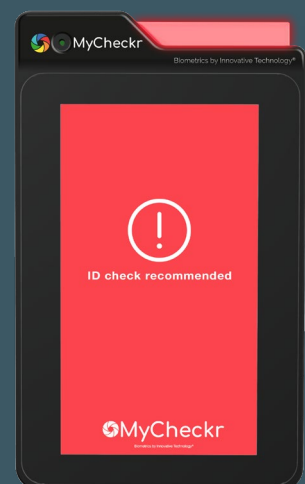
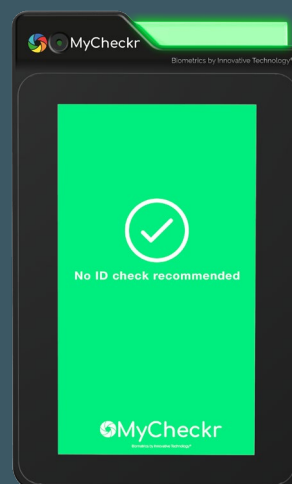
Camera detects person

Helps reduce potential abuse when challenging customers for ID.



Meet licensing objectives

Helps the acquisition of licences in alignment with the objectives of the UK Licensing Act 2003, ensuring the protection of children, and the prevention of crime & disorder.





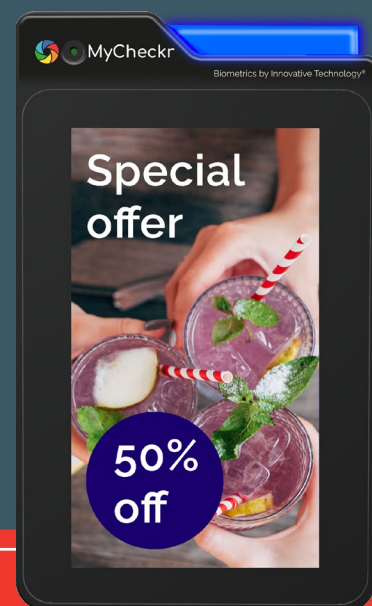
Did you know...

The Association of Convenience Stores 2023 Crime Report found that 'enforcing an age-restricted sales policy' is one of the top triggers for violence against staff.

Why MyCheckr?

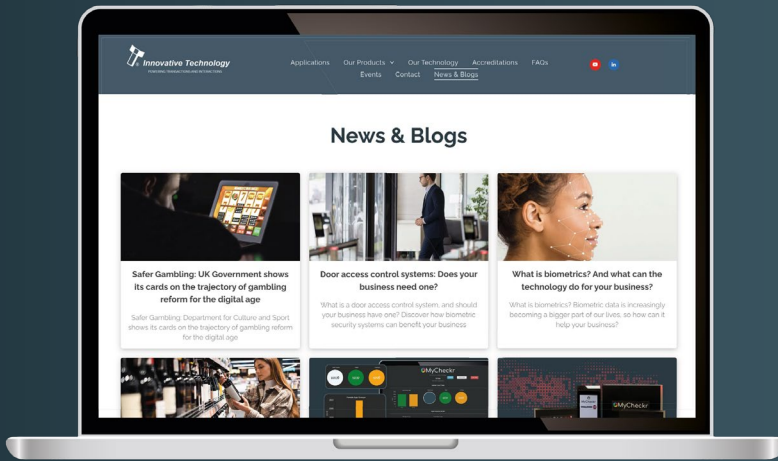
Think of MyCheckr as a supercharged ICU Lite with a built-in display screen, combining impressive age estimation technology with targeted advertising based on demographics. MyCheckr offers:

- Display appropriate advertising
- Digital signage
- Targeted by gender and/or age
- Privacy assured (no images or personal data stored)
- Totally anonymous
- Works offline
- No recurring costs
- Real-time response <1 second





Keep up to date Our news & blogs



Visit our website for all our news and blogs to keep updated on the latest biometrics industry news. Learn about our technology, and how AI-powered facial analysis technology can deliver accurate age checks, display targeted advertisements and collate customer demographics.

[News & blogs](#) 



Get in touch.



Sales Email:

sales@innovative-technology.com



Support Email:

support@innovative-technology.com



Telephone:

+44 161 626 9999

Or Visit:

www.intelligent-identification.com