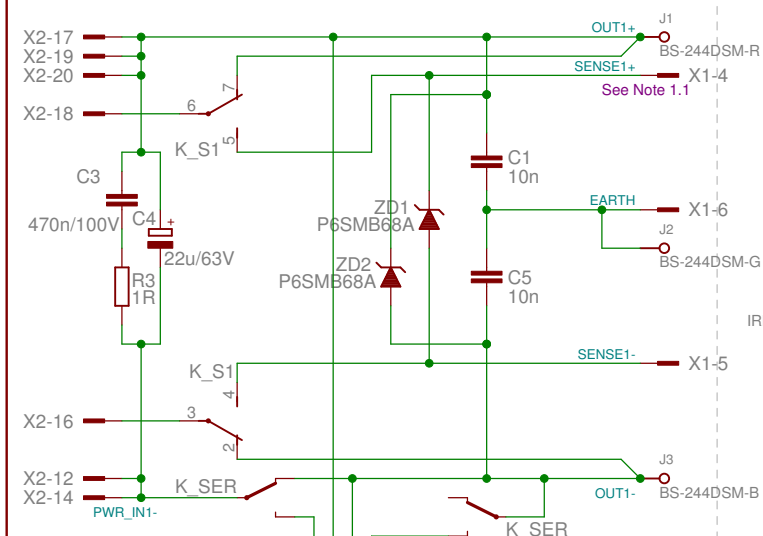
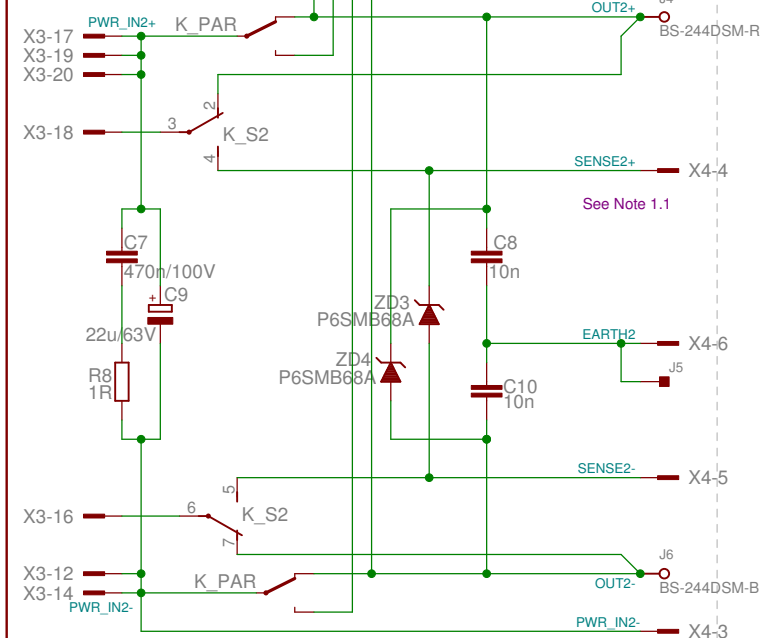


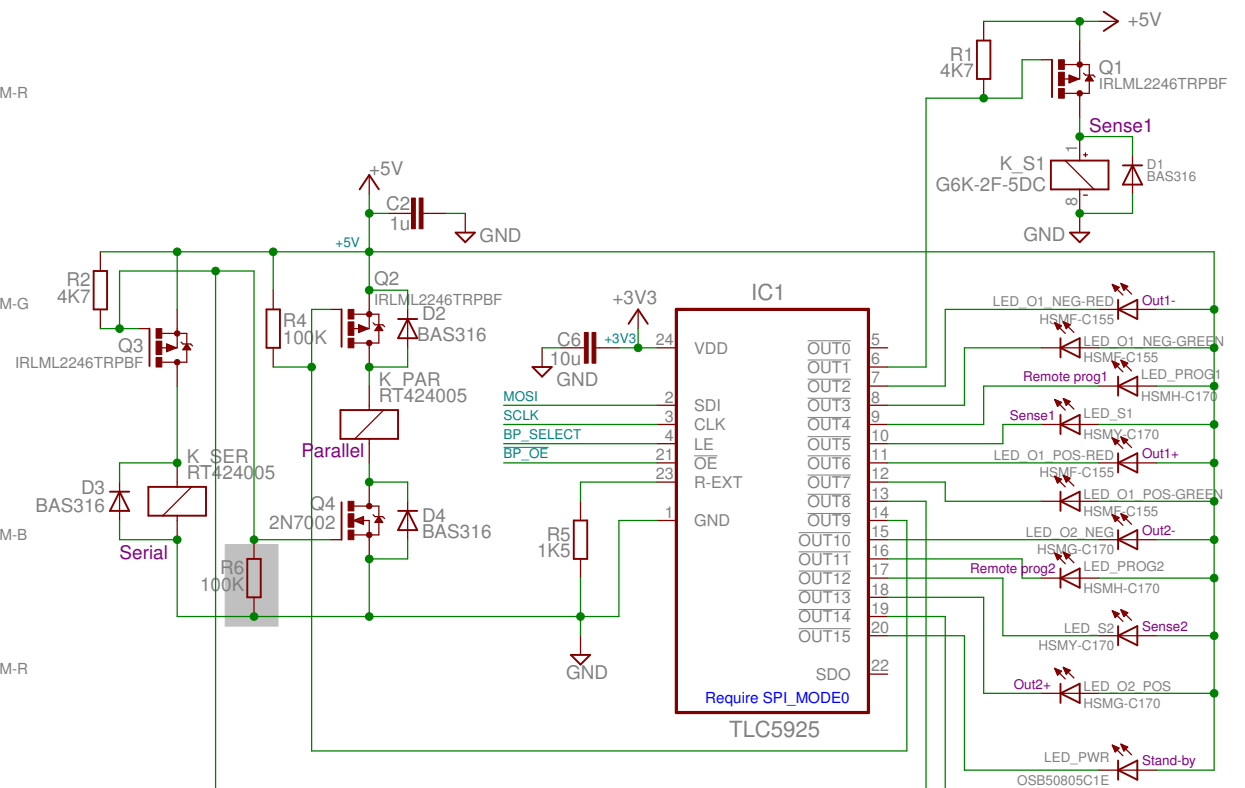
## Ch#1 Power/Sense



## Ch#2 Power/Sense



Licensed under the TAPR Open Hardware License ([www.tapr.org/OHL](http://www.tapr.org/OHL))



## 8-pin push-in connector X1

- Remote programming (Input) 1
- Channel ground 2
- NTC (Input) 3
- Remote sense+ (Input) 4
- Remote sense- (Input) 5
- Protective earth 6
- External trigger (Input) 7
- Digital Gnd 8

## 6-pin push-in connector X3

- Remote programming (Input) 1
- N.C. 2
- Channel ground 3
- Remote sense+ (Input) 4
- Remote sense- (Input) 5
- Protective earth 6

Note 1.1: Solder X1 and X3 to the PCB's opposite side

Remote sensing and outputs interconnector  
Output terminal protection

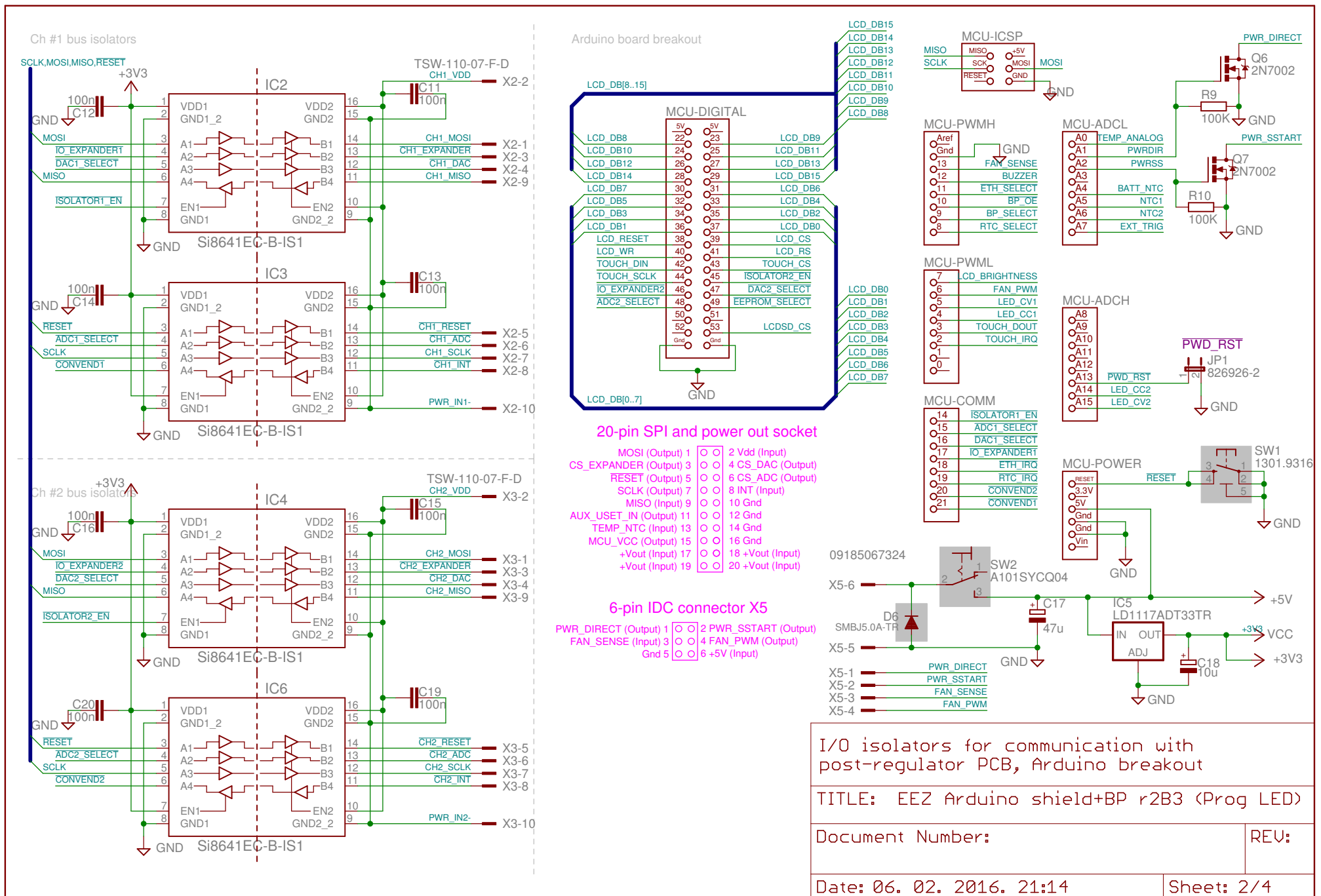
TITLE: EEZ Arduino shield+BP r2B3 (Prog LED)

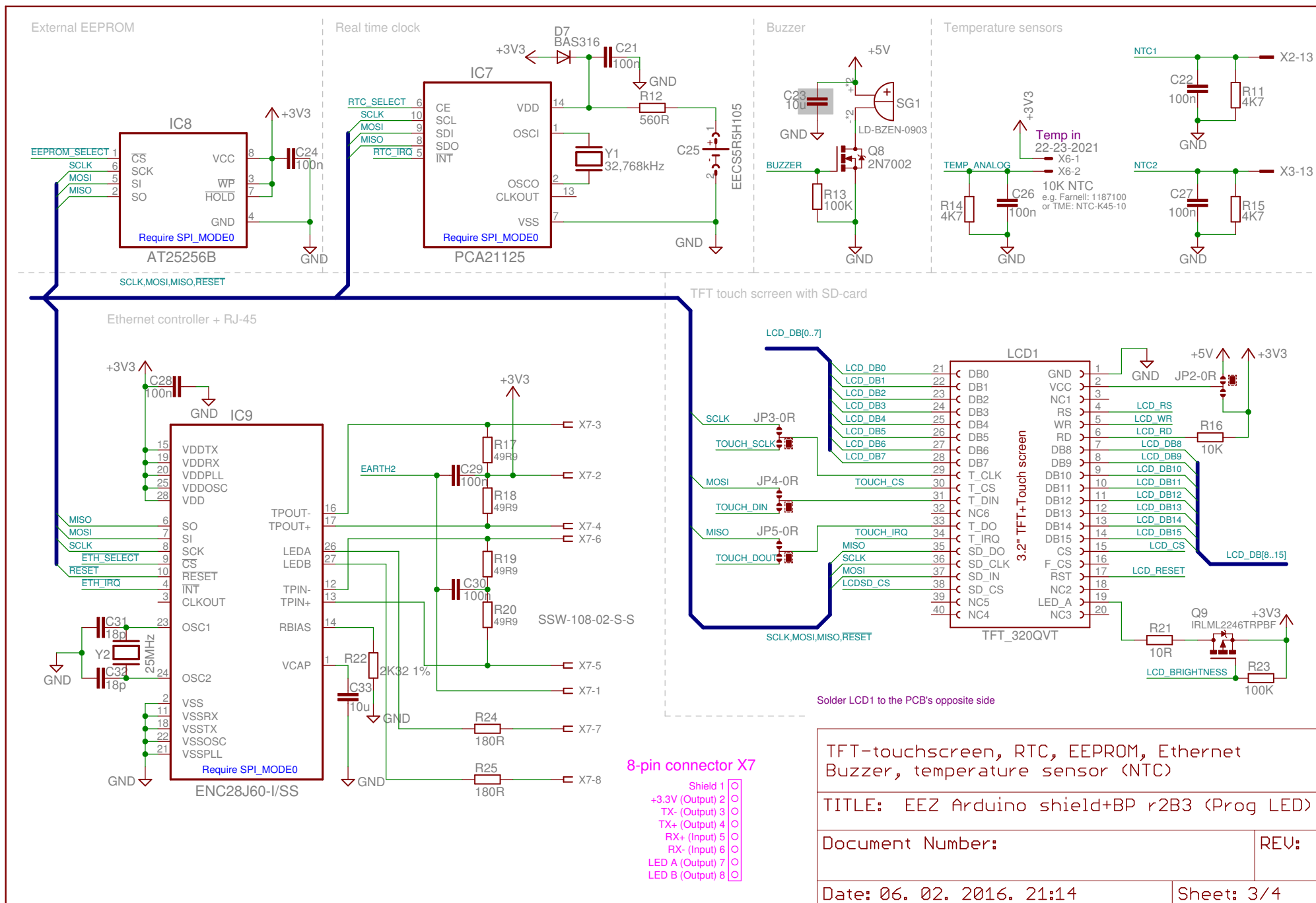
Document Number:

REV:

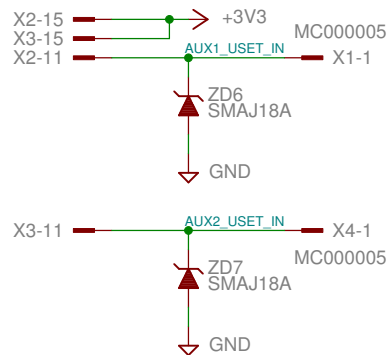
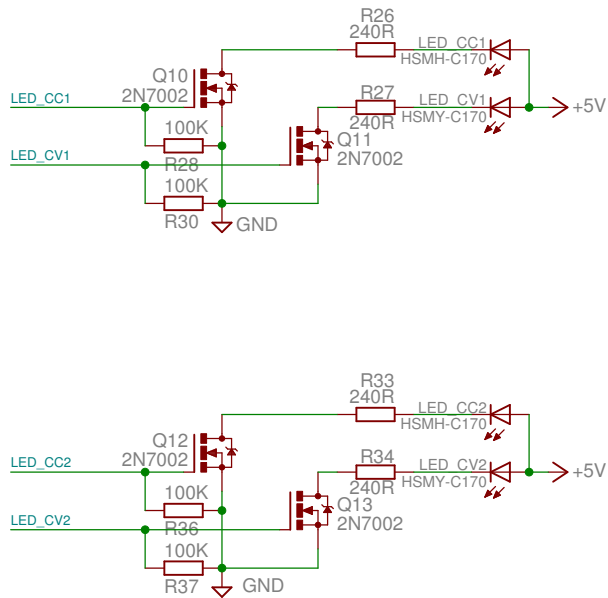
Date: 06. 02. 2016. 21:14

Sheet: 1/4

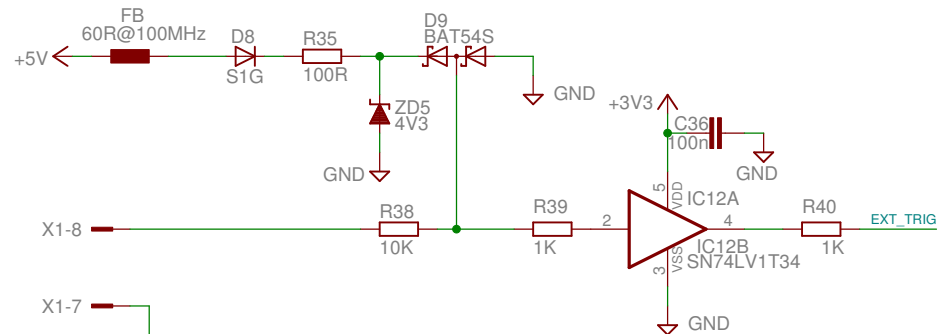
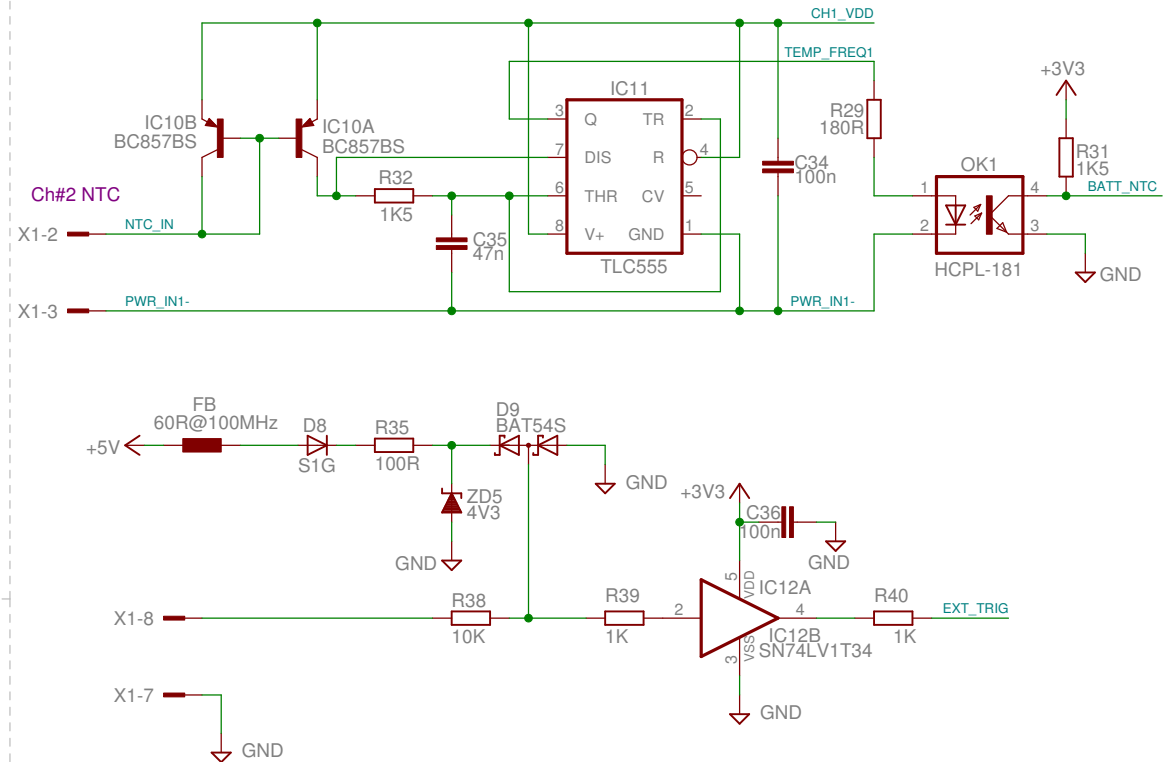




# CC/CV LED indicators



# Channel 2 V/F converter for battery NTC (optional)



LED CC/CV indicators V/F converters for battery NTC (optional)	
TITLE: EEZ Arduino shield+BP r2B3 (Prog LED)	
Document Number:	REV:
Date: 06. 02. 2016. 21:14	Sheet: 4/4