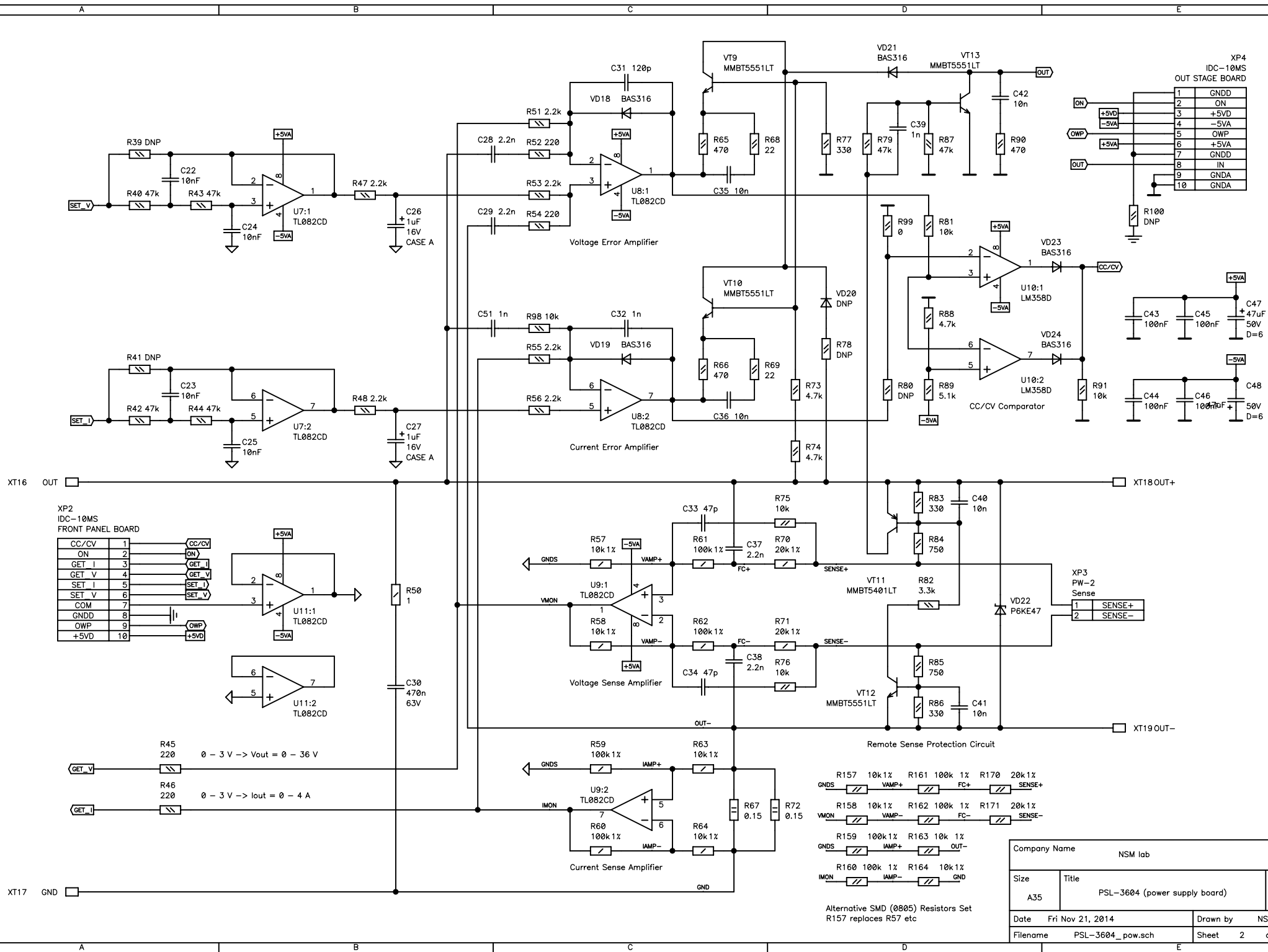


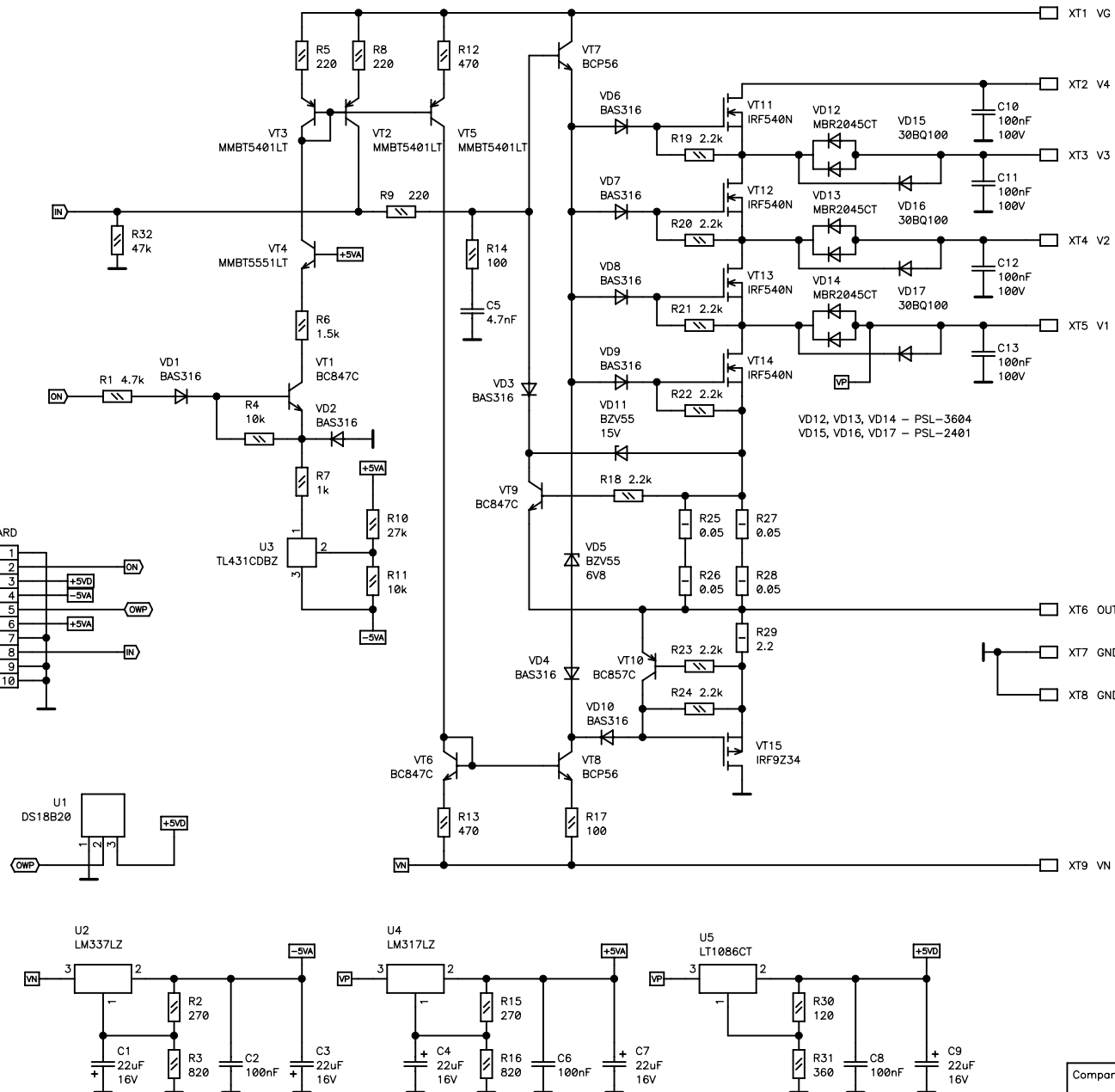
Company Name			NSM lab		
Size	Title				Rev
A35	PSL-3604 (power supply board)				A
Date	Fri Nov 21, 2014			Drawn by	NSM lab
Filename	PSL-3604_pow.sch			Sheet	1 of 2



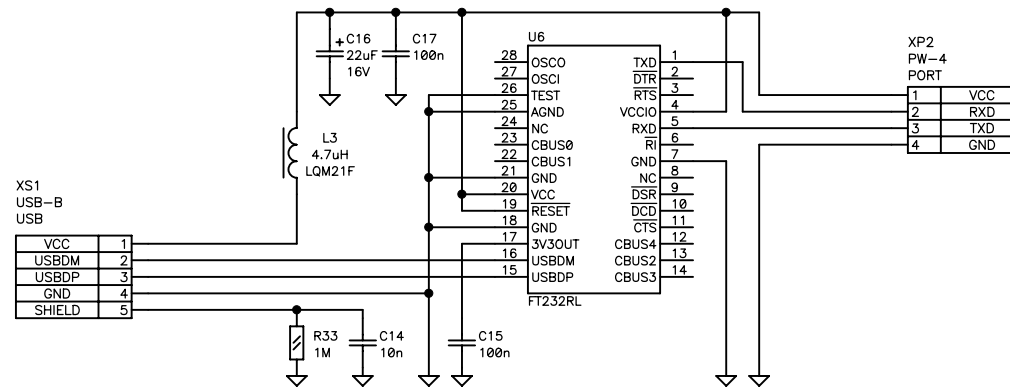
Company Name			NSM lab		
Size	Title				Rev
A35	PSL-3604 (power supply board)				A
Date	Fri Nov 21, 2014			Drawn by	NSM lab
Filename	PSL-3604_pow.sch			Sheet	2 of 2

XP1
IDC-10MS
OUT STAGE BOARD

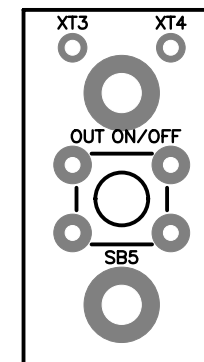
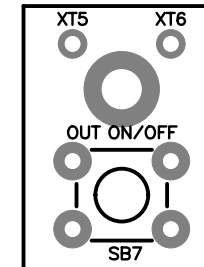
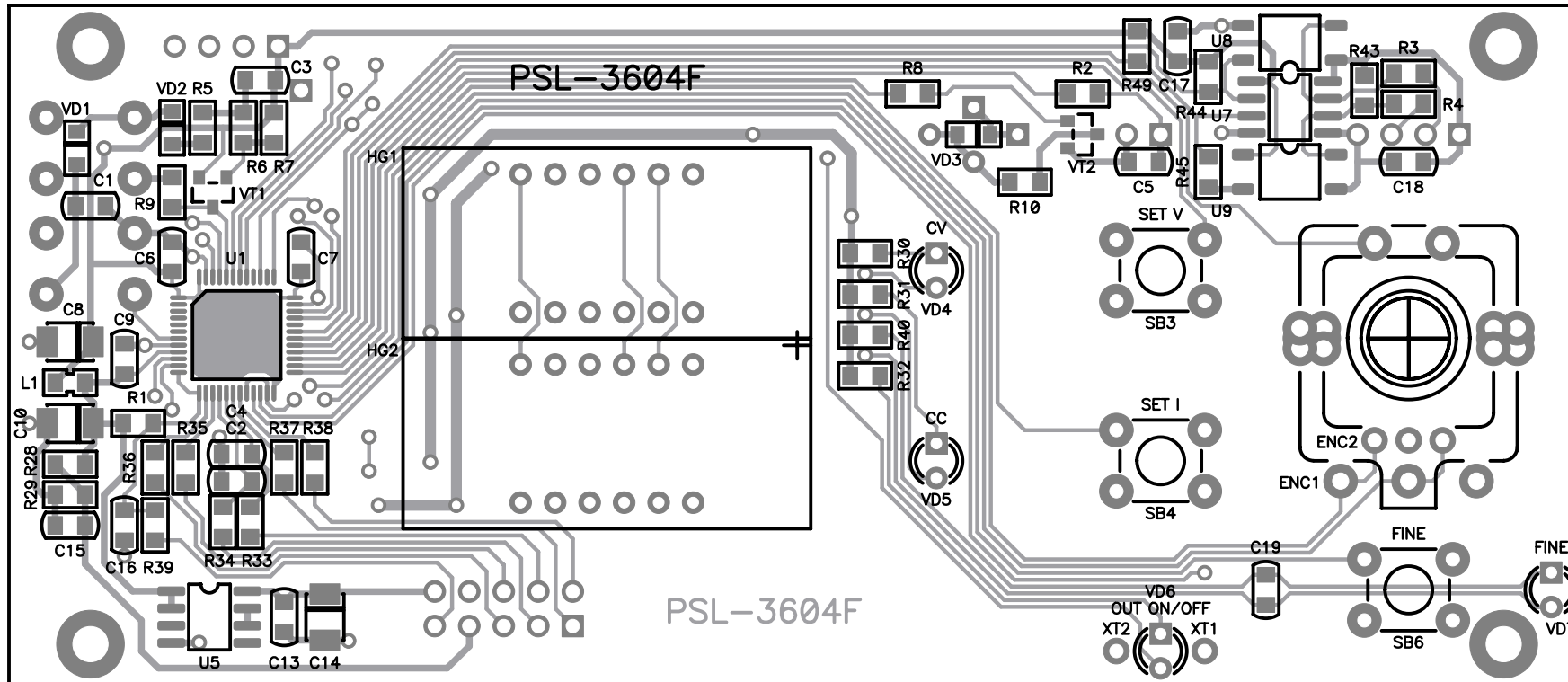
GNDD	1	
ON	2	
+5VD	3	+5VD
-5VA	4	-5VA
OWP	5	OWP
+5VA	6	+5VA
GNDD	7	
IN	8	IN
GNDA	9	
GNDA	10	

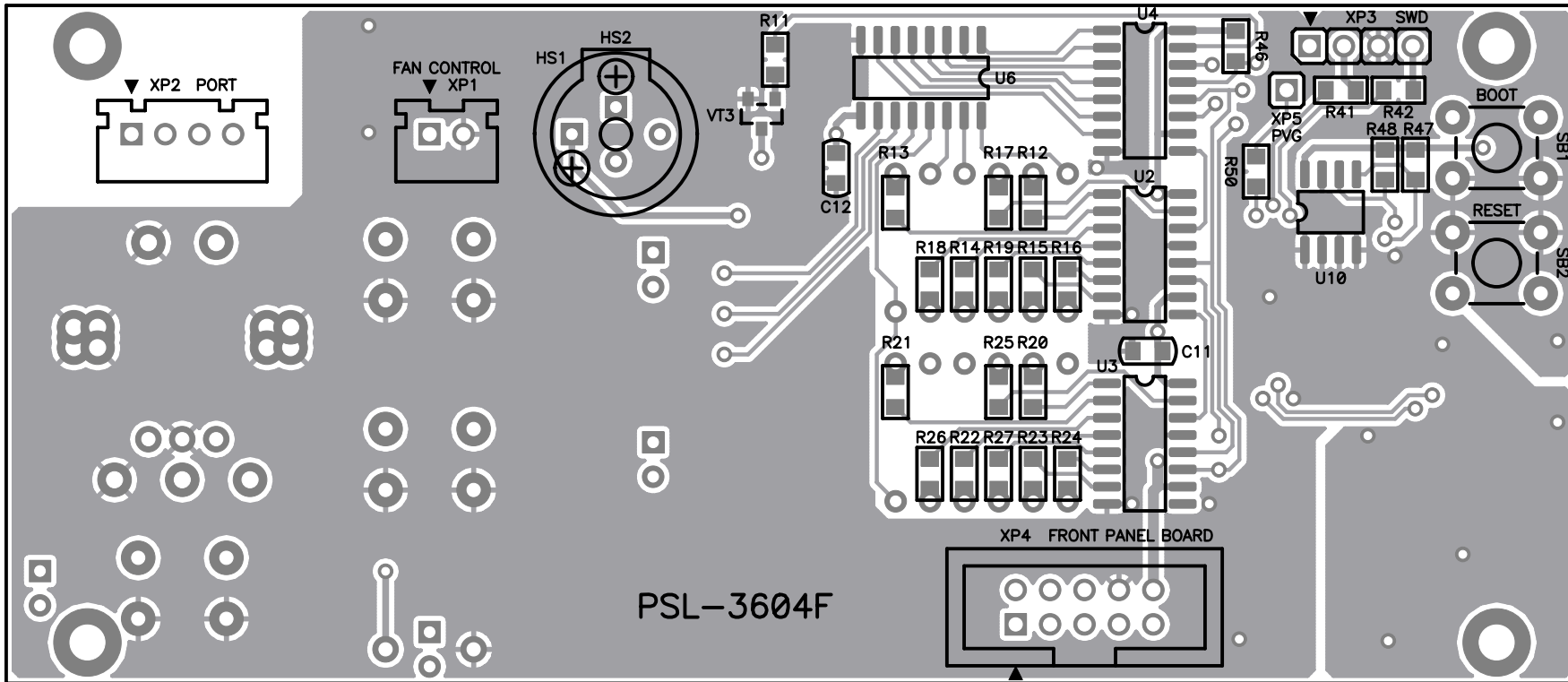
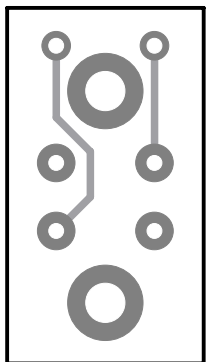
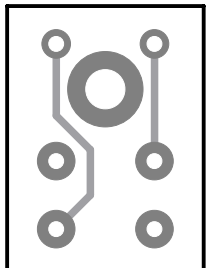


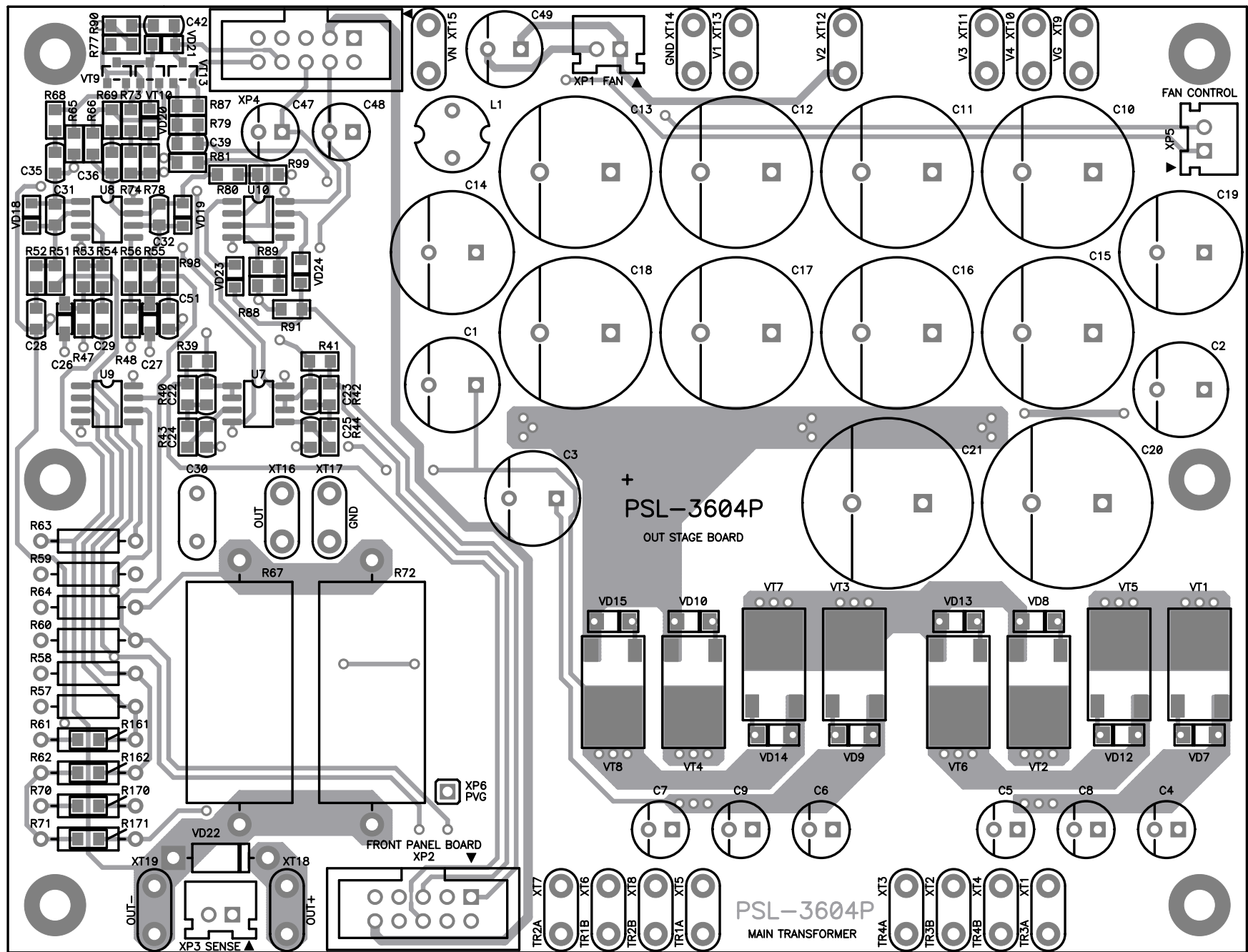
Company Name			NSM lab		
Size	Title				Rev
A35	PSL-3604 (out stage board)				A
Date	Thu Nov 20, 2014			Drawn by	NSM lab
Filename	PSL-3604_out.sch			Sheet	1 of 2

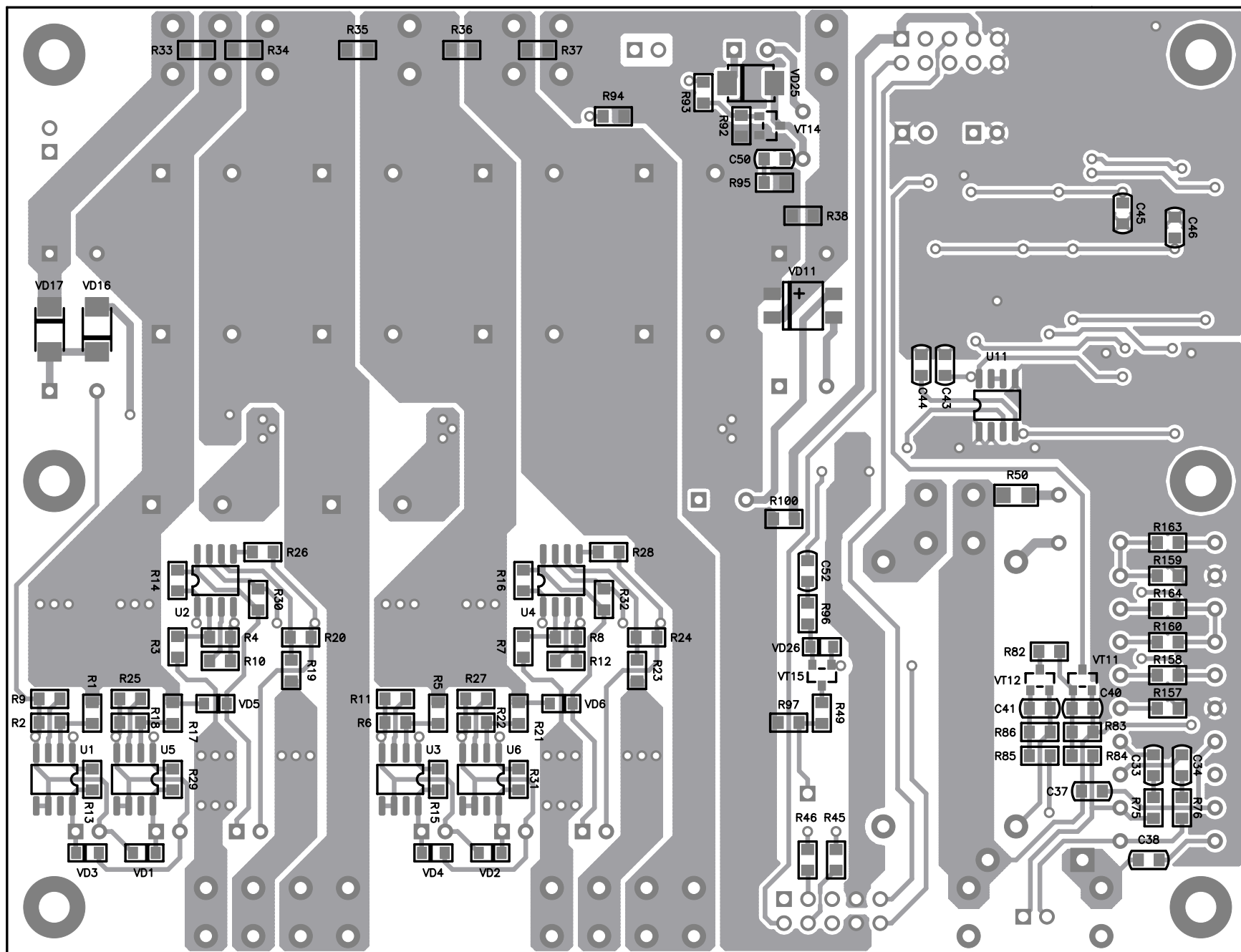


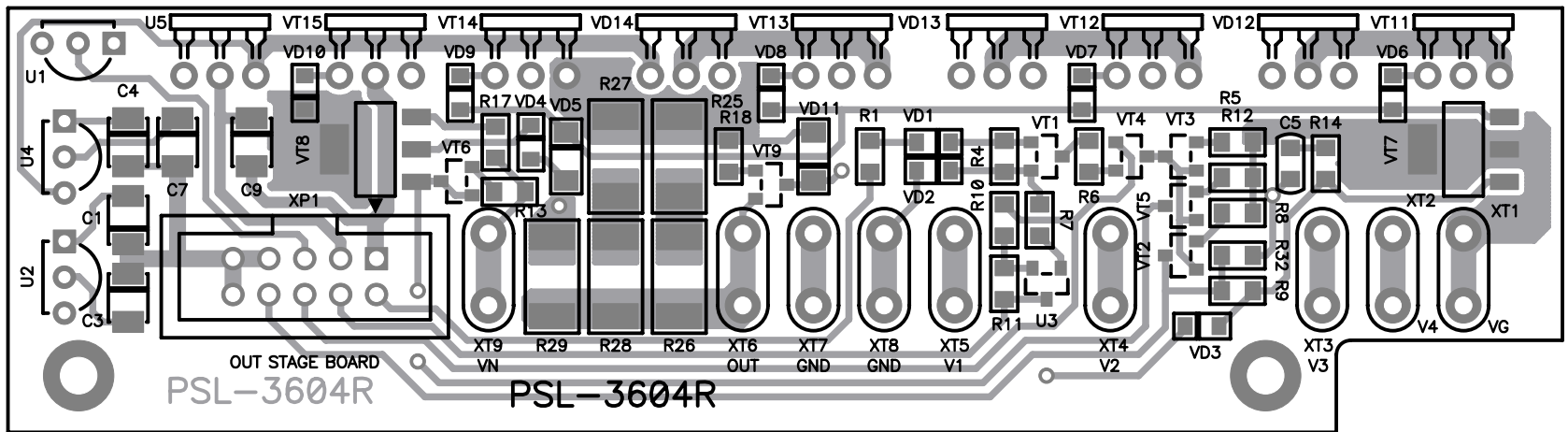
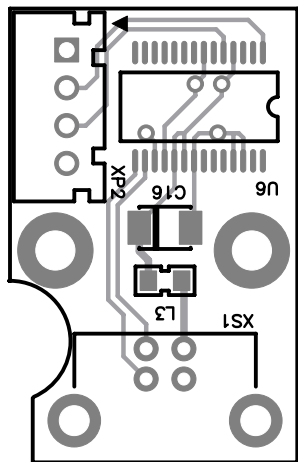
Company Name			NSM lab		
Size	Title				Rev
A35	PSL-3604 (out stage board)				A
Date	Thu Nov 20, 2014			Drawn by	NSM lab
Filename	PSL-3604_out.sch			Sheet	2 of 2

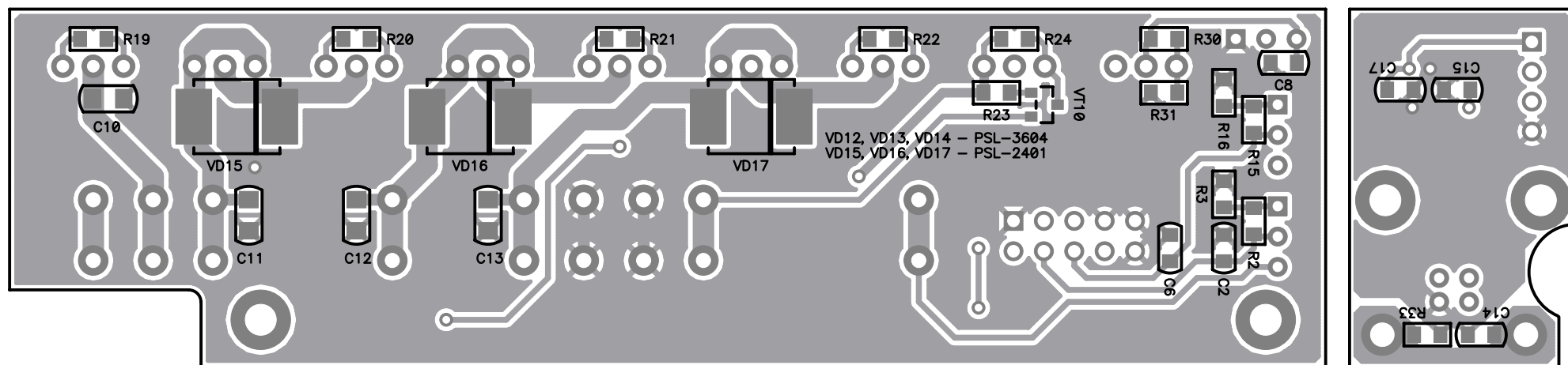












PSL-3604 menu

PrE- CALL	– call preset #0...9
PrE- Stor	– store preset #0...9
Lc- On / OFF	– lock controls
350 -OUP	– over voltage protection threshold, V
OCP- 300	– over current protection, A
OPP- 900	– over power protection, W
dEL- 0	– protection delay, 0...999 ms
FAn- 50.0°	– fan threshold, °C
OtP- 60.0°	– over temperature protection threshold, °C
HSt- 30.0°	– current heatsink temperature, °C
t-00. 00.00	– off timer, h.m.s
trc- On / OFF	– encoder tracking enable
Con- On / OFF	– confirm enable
P- On / OFF	– power display enable
SEt- On / OFF	– display VA setpoint enable
GEt- On / OFF	– display VA getpoint enable
APU- AG / PH / PL	– V measure mode: average/peak H/peak L
APC- AG / PH / PL	– A measure mode: average/peak H/peak L
PrC- On / OFF	– preview current enable
dnP- On / OFF	– down-programmer enable
Out- On / OFF	– output state restore enable
Snd- On / AL / OFF	– sound on/alarm only/off
Enr- On / OFF	– encoder reverse enable
SPL- On / OFF	– splash screen enable
InF- 100	– firmware version
dEF- n0 / YES	– load defaults
CAL- n0 / YES	– calibration entry
ESC- YES	– quit menu