

6

5

4

3

2

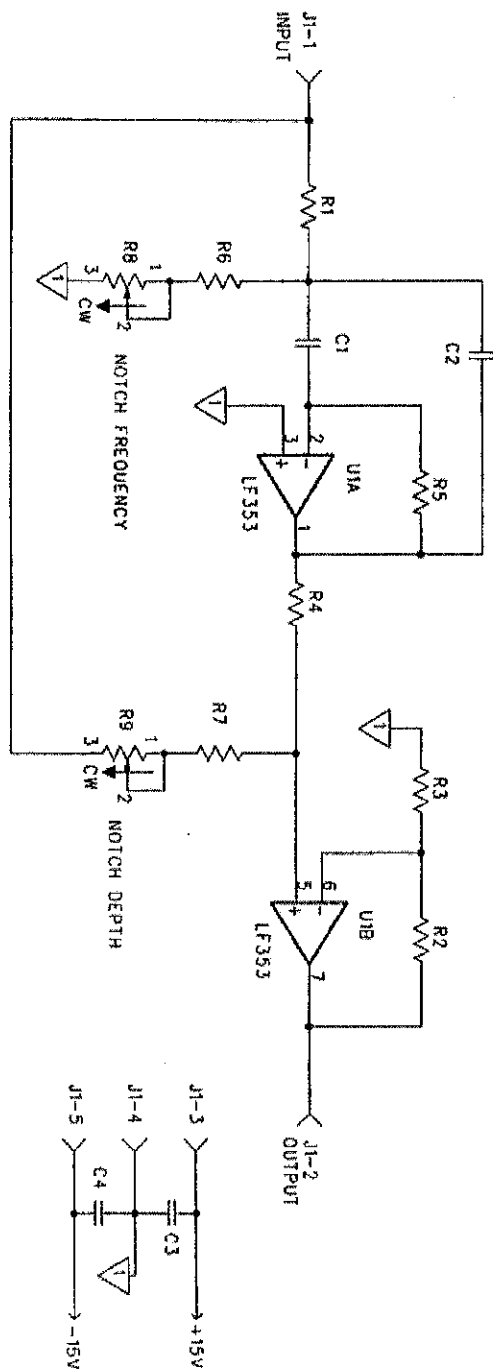
1

REVISION RECORD

LTR	ECO NO.	APPROVED: DATE:

Bond Pass Filter

SUMMING AMPLIFIER



BUT FORMULAS

C1=C2=4C B-BANDWIDTH

Q=10/B B-BANDWIDTH FREQUENCY

R5=2/BQ A-GAIN AT 10

R6=R5/10^{2-2M}R7=R5/10^{2-2M}R8=R5/10^{2-2M}R9=R5/10^{2-2M}R10=R5/10^{2-2M}R11=R5/10^{2-2M}R12=R5/10^{2-2M}R13=R5/10^{2-2M}R14=R5/10^{2-2M}R15=R5/10^{2-2M}R16=R5/10^{2-2M}R17=R5/10^{2-2M}R18=R5/10^{2-2M}R19=R5/10^{2-2M}R20=R5/10^{2-2M}R21=R5/10^{2-2M}R22=R5/10^{2-2M}R23=R5/10^{2-2M}R24=R5/10^{2-2M}R25=R5/10^{2-2M}R26=R5/10^{2-2M}R27=R5/10^{2-2M}R28=R5/10^{2-2M}R29=R5/10^{2-2M}R30=R5/10^{2-2M}R31=R5/10^{2-2M}R32=R5/10^{2-2M}R33=R5/10^{2-2M}R34=R5/10^{2-2M}R35=R5/10^{2-2M}R36=R5/10^{2-2M}R37=R5/10^{2-2M}R38=R5/10^{2-2M}R39=R5/10^{2-2M}R40=R5/10^{2-2M}R41=R5/10^{2-2M}R42=R5/10^{2-2M}R43=R5/10^{2-2M}R44=R5/10^{2-2M}R45=R5/10^{2-2M}R46=R5/10^{2-2M}R47=R5/10^{2-2M}R48=R5/10^{2-2M}R49=R5/10^{2-2M}R50=R5/10^{2-2M}R51=R5/10^{2-2M}R52=R5/10^{2-2M}R53=R5/10^{2-2M}R54=R5/10^{2-2M}R55=R5/10^{2-2M}R56=R5/10^{2-2M}R57=R5/10^{2-2M}R58=R5/10^{2-2M}R59=R5/10^{2-2M}R60=R5/10^{2-2M}R61=R5/10^{2-2M}R62=R5/10^{2-2M}R63=R5/10^{2-2M}R64=R5/10^{2-2M}R65=R5/10^{2-2M}R66=R5/10^{2-2M}R67=R5/10^{2-2M}R68=R5/10^{2-2M}R69=R5/10^{2-2M}R70=R5/10^{2-2M}R71=R5/10^{2-2M}R72=R5/10^{2-2M}R73=R5/10^{2-2M}R74=R5/10^{2-2M}R75=R5/10^{2-2M}R76=R5/10^{2-2M}R77=R5/10^{2-2M}R78=R5/10^{2-2M}R79=R5/10^{2-2M}R80=R5/10^{2-2M}R81=R5/10^{2-2M}R82=R5/10^{2-2M}R83=R5/10^{2-2M}R84=R5/10^{2-2M}R85=R5/10^{2-2M}R86=R5/10^{2-2M}R87=R5/10^{2-2M}R88=R5/10^{2-2M}R89=R5/10^{2-2M}R90=R5/10^{2-2M}R91=R5/10^{2-2M}R92=R5/10^{2-2M}R93=R5/10^{2-2M}R94=R5/10^{2-2M}R95=R5/10^{2-2M}R96=R5/10^{2-2M}R97=R5/10^{2-2M}R98=R5/10^{2-2M}R99=R5/10^{2-2M}R100=R5/10^{2-2M}R101=R5/10^{2-2M}R102=R5/10^{2-2M}R103=R5/10^{2-2M}R104=R5/10^{2-2M}R105=R5/10^{2-2M}R106=R5/10^{2-2M}R107=R5/10^{2-2M}R108=R5/10^{2-2M}R109=R5/10^{2-2M}R110=R5/10^{2-2M}R111=R5/10^{2-2M}R112=R5/10^{2-2M}R113=R5/10^{2-2M}R114=R5/10^{2-2M}R115=R5/10^{2-2M}R116=R5/10^{2-2M}R117=R5/10^{2-2M}R118=R5/10^{2-2M}R119=R5/10^{2-2M}R120=R5/10^{2-2M}R121=R5/10^{2-2M}R122=R5/10^{2-2M}R123=R5/10^{2-2M}R124=R5/10^{2-2M}R125=R5/10^{2-2M}R126=R5/10^{2-2M}R127=R5/10^{2-2M}R128=R5/10^{2-2M}R129=R5/10^{2-2M}R130=R5/10^{2-2M}R131=R5/10^{2-2M}R132=R5/10^{2-2M}R133=R5/10^{2-2M}R134=R5/10^{2-2M}R135=R5/10^{2-2M}R136=R5/10^{2-2M}R137=R5/10^{2-2M}R138=R5/10^{2-2M}R139=R5/10^{2-2M}R140=R5/10^{2-2M}R141=R5/10^{2-2M}R142=R5/10^{2-2M}R143=R5/10^{2-2M}R144=R5/10^{2-2M}R145=R5/10^{2-2M}R146=R5/10^{2-2M}R147=R5/10^{2-2M}R148=R5/10^{2-2M}R149=R5/10^{2-2M}R150=R5/10^{2-2M}R151=R5/10^{2-2M}R152=R5/10^{2-2M}R153=R5/10^{2-2M}R154=R5/10^{2-2M}R155=R5/10^{2-2M}R156=R5/10^{2-2M}R157=R5/10^{2-2M}R158=R5/10^{2-2M}R159=R5/10^{2-2M}R160=R5/10^{2-2M}R161=R5/10^{2-2M}R162=R5/10^{2-2M}R163=R5/10^{2-2M}R164=R5/10^{2-2M}R165=R5/10^{2-2M}R166=R5/10^{2-2M}R167=R5/10^{2-2M}R168=R5/10^{2-2M}R169=R5/10^{2-2M}R170=R5/10^{2-2M}R171=R5/10^{2-2M}R172=R5/10^{2-2M}R173=R5/10^{2-2M}R174=R5/10^{2-2M}R175=R5/10^{2-2M}R176=R5/10^{2-2M}R177=R5/10^{2-2M}R178=R5/10^{2-2M}R179=R5/10^{2-2M}R180=R5/10^{2-2M}R181=R5/10^{2-2M}R182=R5/10^{2-2M}R183=R5/10^{2-2M}R184=R5/10^{2-2M}R185=R5/10^{2-2M}R186=R5/10^{2-2M}R187=R5/10^{2-2M}R188=R5/10^{2-2M}R189=R5/10^{2-2M}R190=R5/10^{2-2M}R191=R5/10^{2-2M}R192=R5/10^{2-2M}R193=R5/10^{2-2M}R194=R5/10^{2-2M}R195=R5/10^{2-2M}R196=R5/10^{2-2M}R197=R5/10^{2-2M}R198=R5/10^{2-2M}R199=R5/10^{2-2M}R200=R5/10^{2-2M}R201=R5/10^{2-2M}R202=R5/10^{2-2M}R203=R5/10^{2-2M}R204=R5/10^{2-2M}R205=R5/10^{2-2M}R206=R5/10^{2-2M}R207=R5/10^{2-2M}R208=R5/10^{2-2M}R209=R5/10^{2-2M}R210=R5/10^{2-2M}R211=R5/10^{2-2M}R212=R5/10^{2-2M}R213=R5/10^{2-2M}R214=R5/10^{2-2M}R215=R5/10^{2-2M}R216=R5/10^{2-2M}R217=R5/10^{2-2M}R218=R5/10^{2-2M}R219=R5/10^{2-2M}R220=R5/10^{2-2M}R221=R5/10^{2-2M}R222=R5/10^{2-2M}R223=R5/10^{2-2M}R224=R5/10^{2-2M}R225=R5/10^{2-2M}R226=R5/10^{2-2M}R227=R5/10^{2-2M}R228=R5/10^{2-2M}R229=R5/10^{2-2M}R230=R5/10^{2-2M}R231=R5/10^{2-2M}R232=R5/10^{2-2M}R233=R5/10^{2-2M}R234=R5/10^{2-2M}R235=R5/10^{2-2M}R236=R5/10^{2-2M}R237=R5/10^{2-2M}R238=R5/10^{2-2M}R239=R5/10^{2-2M}R240=R5/10^{2-2M}R241=R5/10^{2-2M}R242=R5/10^{2-2M}R243=R5/10^{2-2M}R244=R5/10^{2-2M}