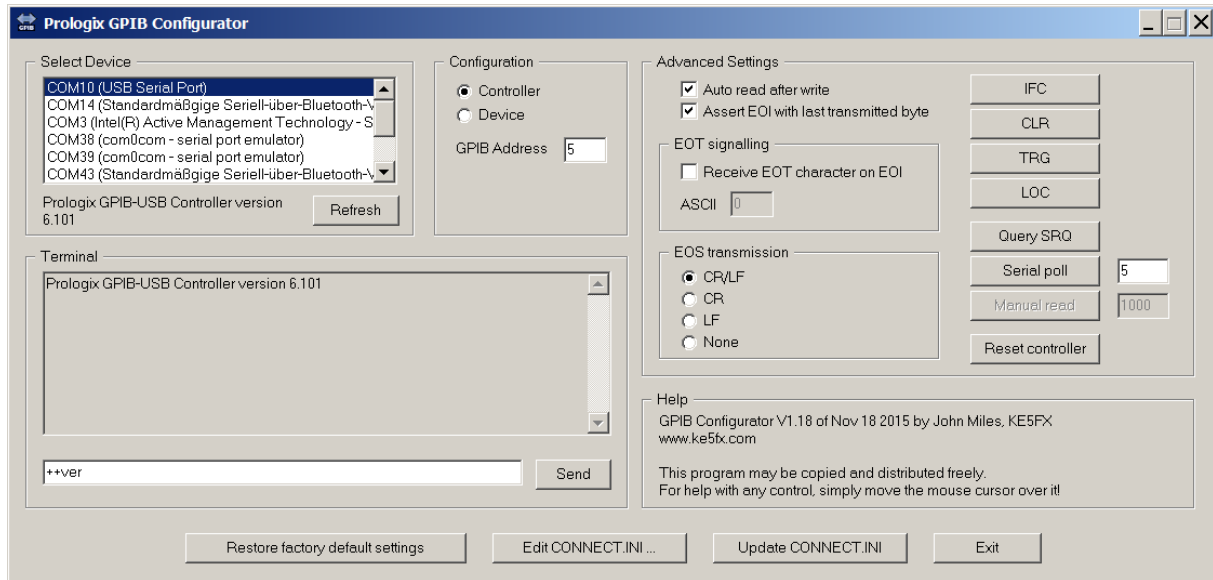


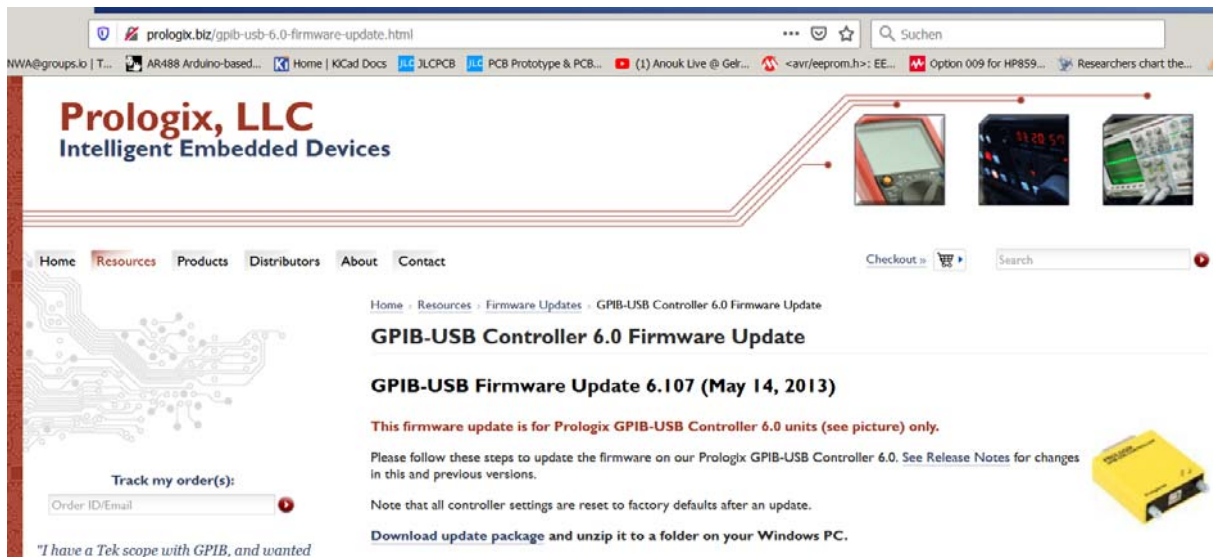
Updating the firmware of my Prologix Adapter Rev. 6.4.1

March 18th, 2020

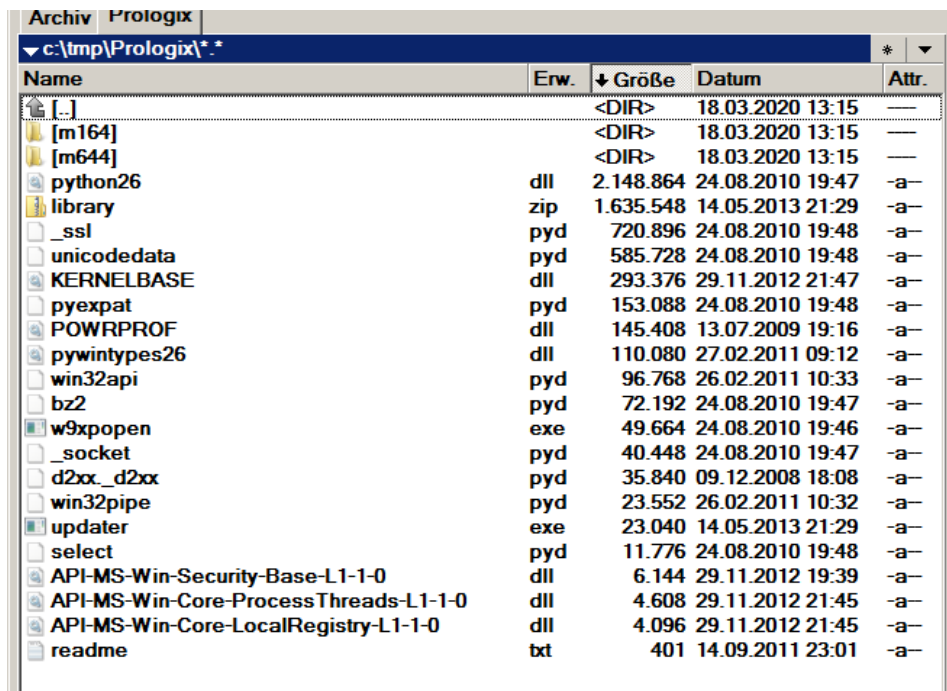
Current firmware version same as of time of purchase is 6.101:



The current version firmware available on the Prologix web page is 6.107:



Ok, so I download the new firmware package and unzip it to my local hard disk.



Name	Erw.	↓ Größe	Datum	Attr.
[.]		<DIR>	18.03.2020 13:15	—
[m164]		<DIR>	18.03.2020 13:15	—
[m644]		<DIR>	18.03.2020 13:15	—
python26	dll	2.148.864	24.08.2010 19:47	-a-
library	zip	1.635.548	14.05.2013 21:29	-a-
_ssl	pyd	720.896	24.08.2010 19:48	-a-
uncodedata	pyd	585.728	24.08.2010 19:48	-a-
KERNELBASE	dll	293.376	29.11.2012 21:47	-a-
pyexpat	pyd	153.088	24.08.2010 19:48	-a-
POWRPROF	dll	145.408	13.07.2009 19:16	-a-
pywintypes26	dll	110.080	27.02.2011 09:12	-a-
win32api	pyd	96.768	26.02.2011 10:33	-a-
bz2	pyd	72.192	24.08.2010 19:47	-a-
w9xpopen	exe	49.664	24.08.2010 19:46	-a-
_socket	pyd	40.448	24.08.2010 19:47	-a-
d2xx_d2xx	pyd	35.840	09.12.2008 18:08	-a-
win32pipe	pyd	23.552	26.02.2011 10:32	-a-
updater	exe	23.040	14.05.2013 21:29	-a-
select	pyd	11.776	24.08.2010 19:48	-a-
API-MS-Win-Security-Base-L1-1-0	dll	6.144	29.11.2012 19:39	-a-
API-MS-Win-Core-ProcessThreads-L1-1-0	dll	4.608	29.11.2012 21:45	-a-
API-MS-Win-Core-LocalRegistry-L1-1-0	dll	4.096	29.11.2012 21:45	-a-
readme	txt	401	14.09.2011 23:01	-a-

Next, I follow the instructions on the Prologix web page:

Update firmware

1. Disconnect Prologix GPIB-USB controller from GPIB instruments or GPIB cable.
2. Connect Prologix GPIB-USB controller to PC using an USB cable.
3. Open a command prompt on the PC and change directory to the folder where you unzipped the update package
4. Type `updater.exe`
5. Wait until update is complete, which could take up to 30 seconds.

You have successfully updated the firmware of your Prologix GPIB-USB controller!

```
C:\Windows\System32\cmd.exe

c:\tmp\Prologix>updater.exe
Detecting Prologix GPIB-USB Controller...
Prologix GPIB-USB Controller detected.
USB library version: 3.2.12
USB driver version: 2.12.18
Starting bootloader. Please wait...
Hardware Version: 2.0.0.0
Bootloader Version: 2.0.0.0
Opening firmware update file: ./m644/gpib-usb-m644-c.bin
Getting block size...
Block size: 256 bytes.
Erasing flash...
Flash Erased.
Writing new firmware to flash...
100 % written.
Flash write completed. Verifying flash contents...
Flash verification succeeded.
Restarting. Please wait...

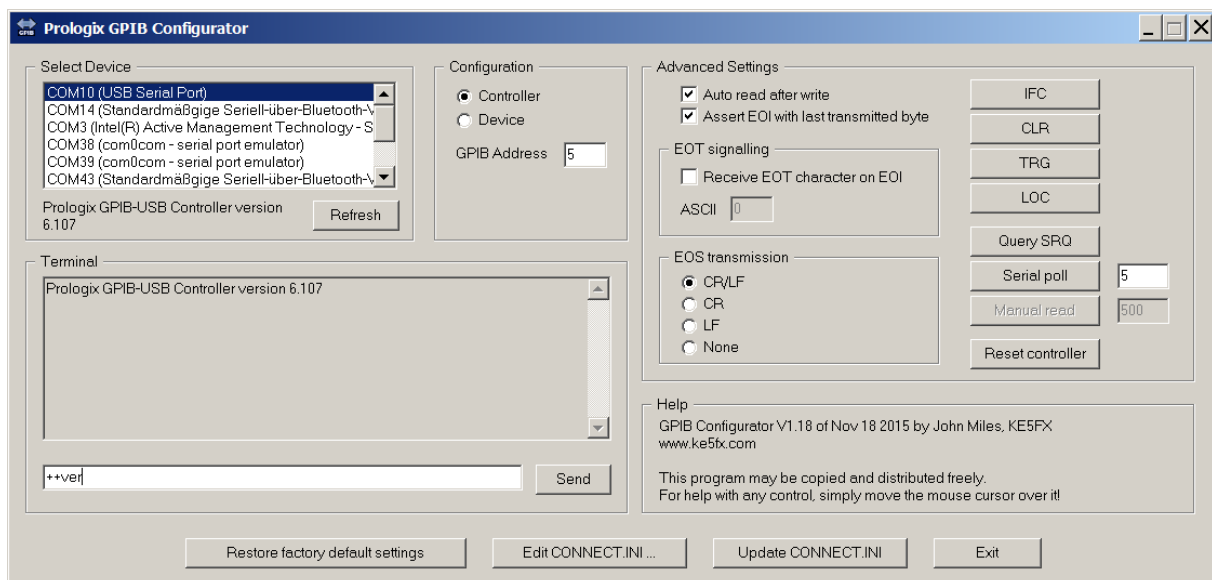
Current version: Prologix GPIB-USB Controller version 6.107

Firmware update completed successfully.

c:\tmp\Prologix>
```

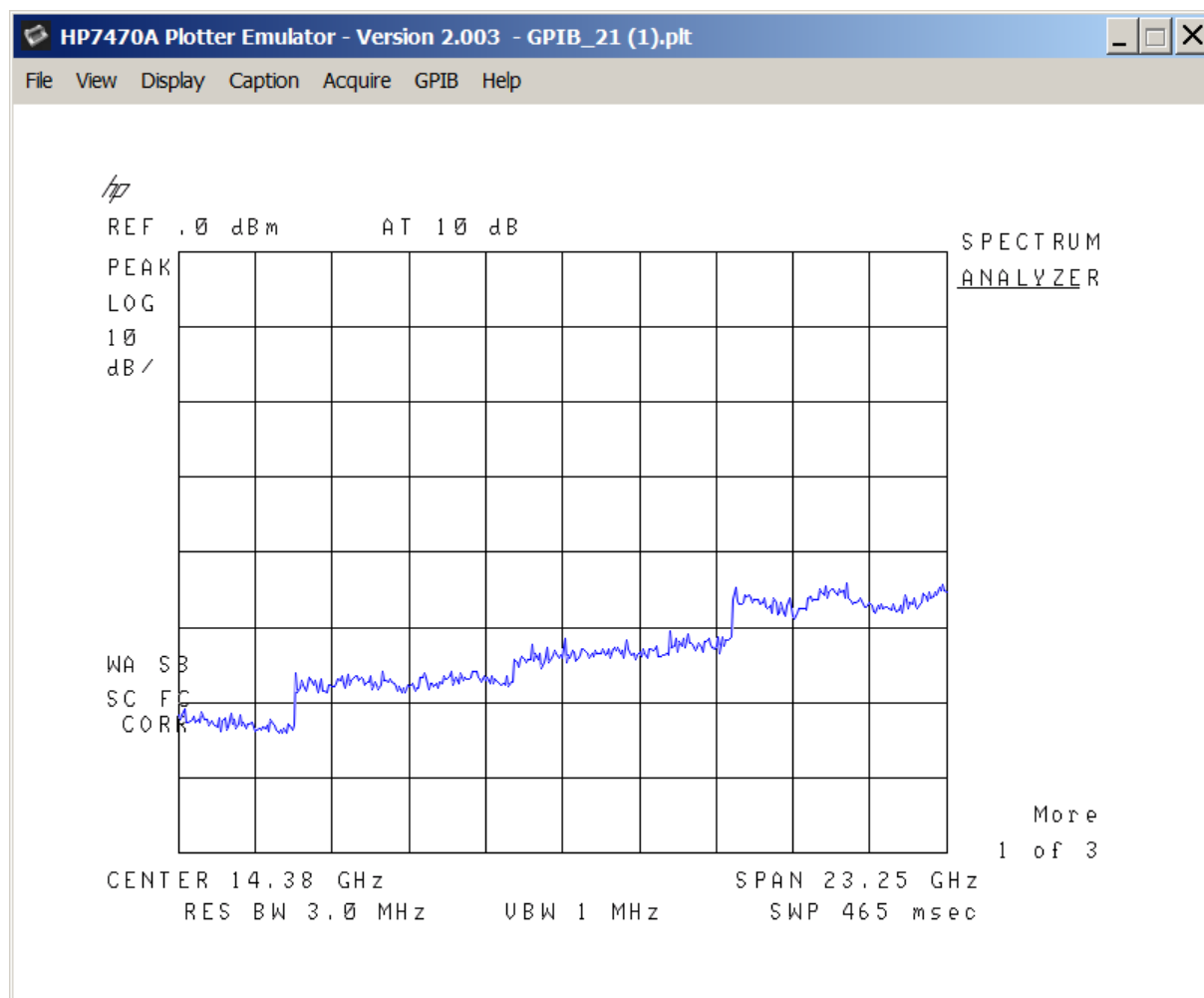
Looks like the update was successful.

What does the GPIB Configurator say?



6.107, so success!

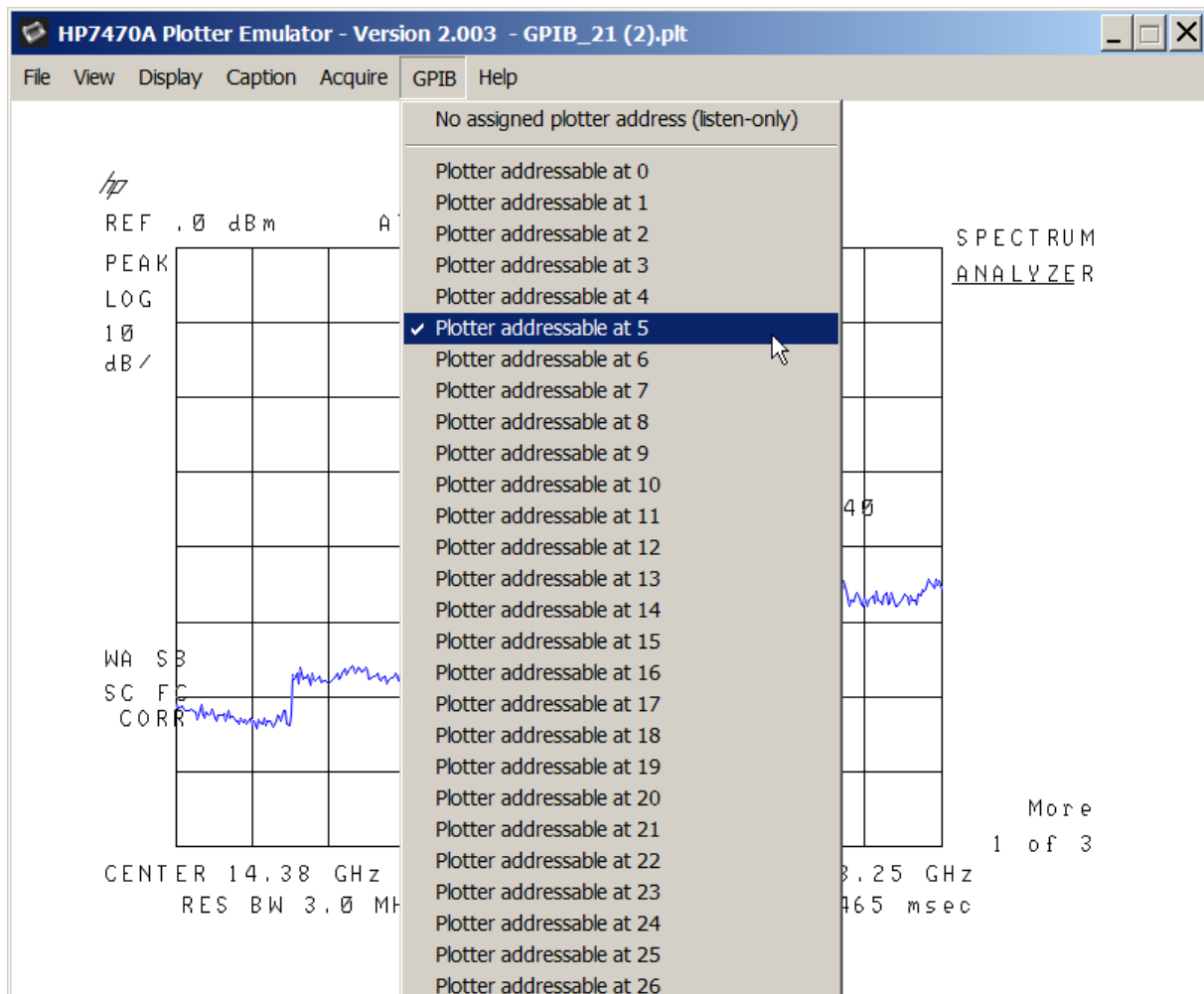
Can I still capture a screenshot from my HP9593E using the adapter and the HP7470A Plotter emulator?



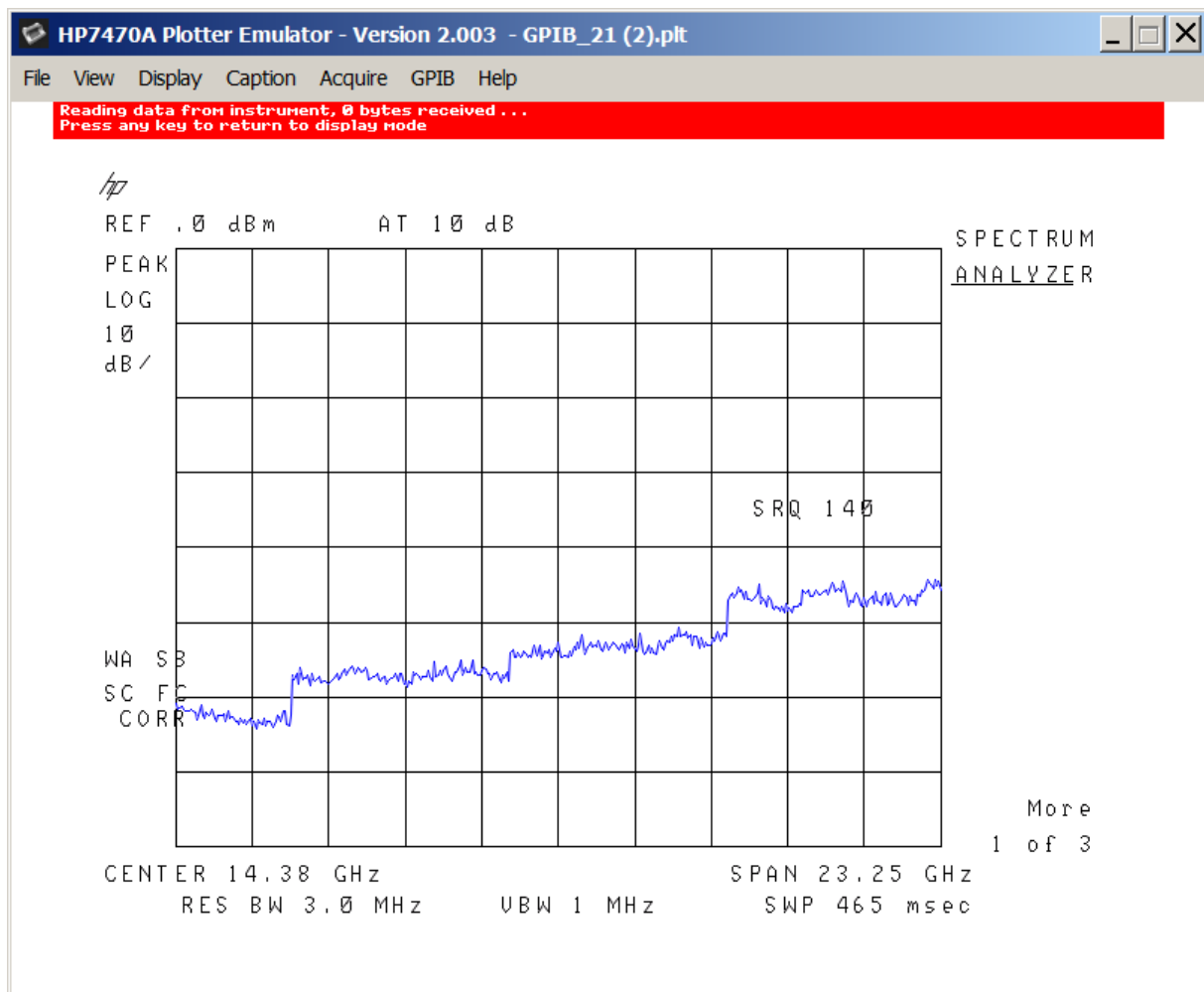
Ok, works!

The reason for the update was that instrument initiated plotting by pressing the screencopy button didn't work. Does it work now? SA-Settings: Plotter listening on address 5.

7470 setting:

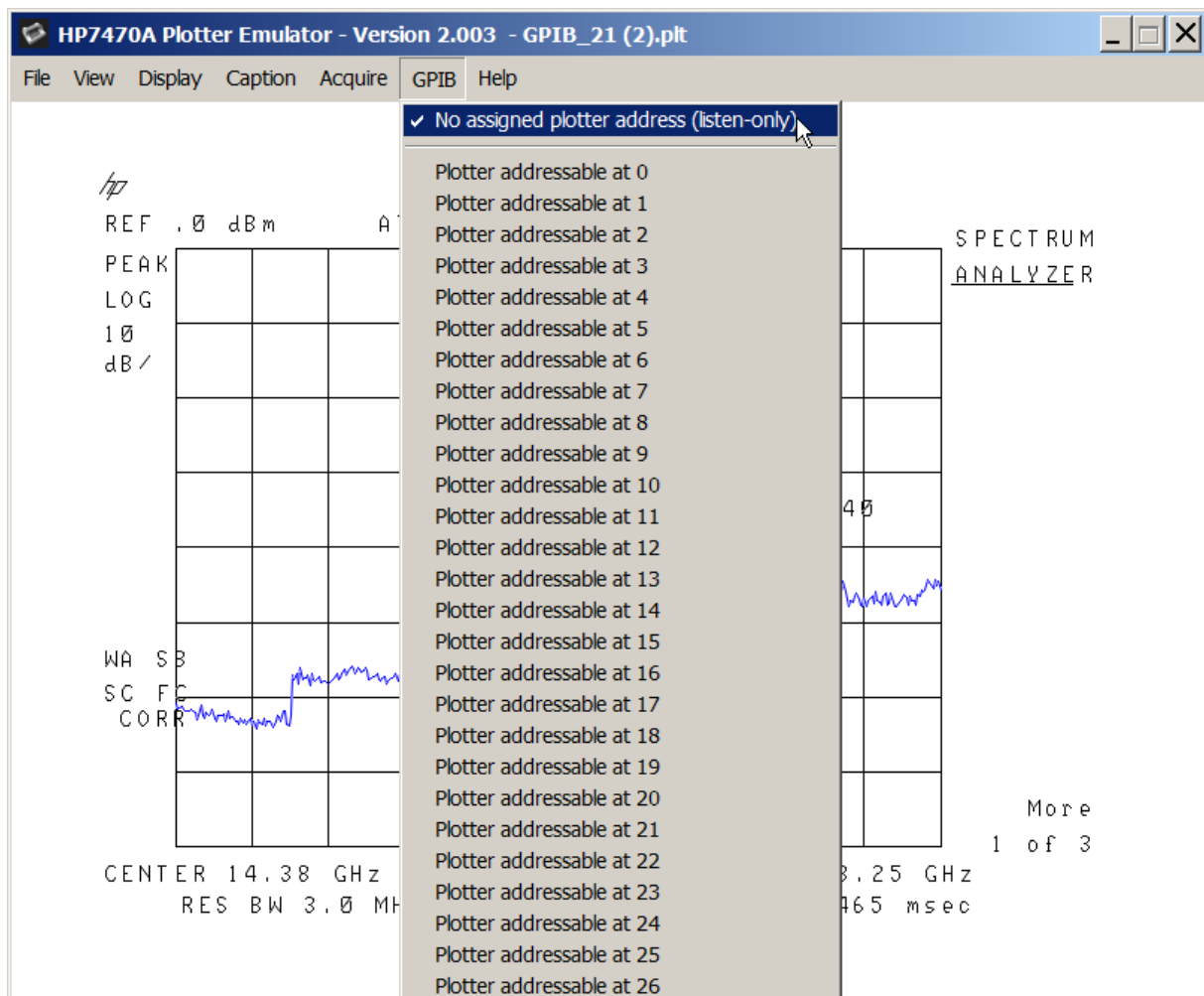


Pressing the "w" key puts 7470.exe into listening mode:



But when pressing the SA copy-button, nothing happens, no plot data sent.

How about unaddressed mode?



Same thing, after pressing "w" key in plotter and pressing SA copy key no data coming in.

Have I done something wrong?