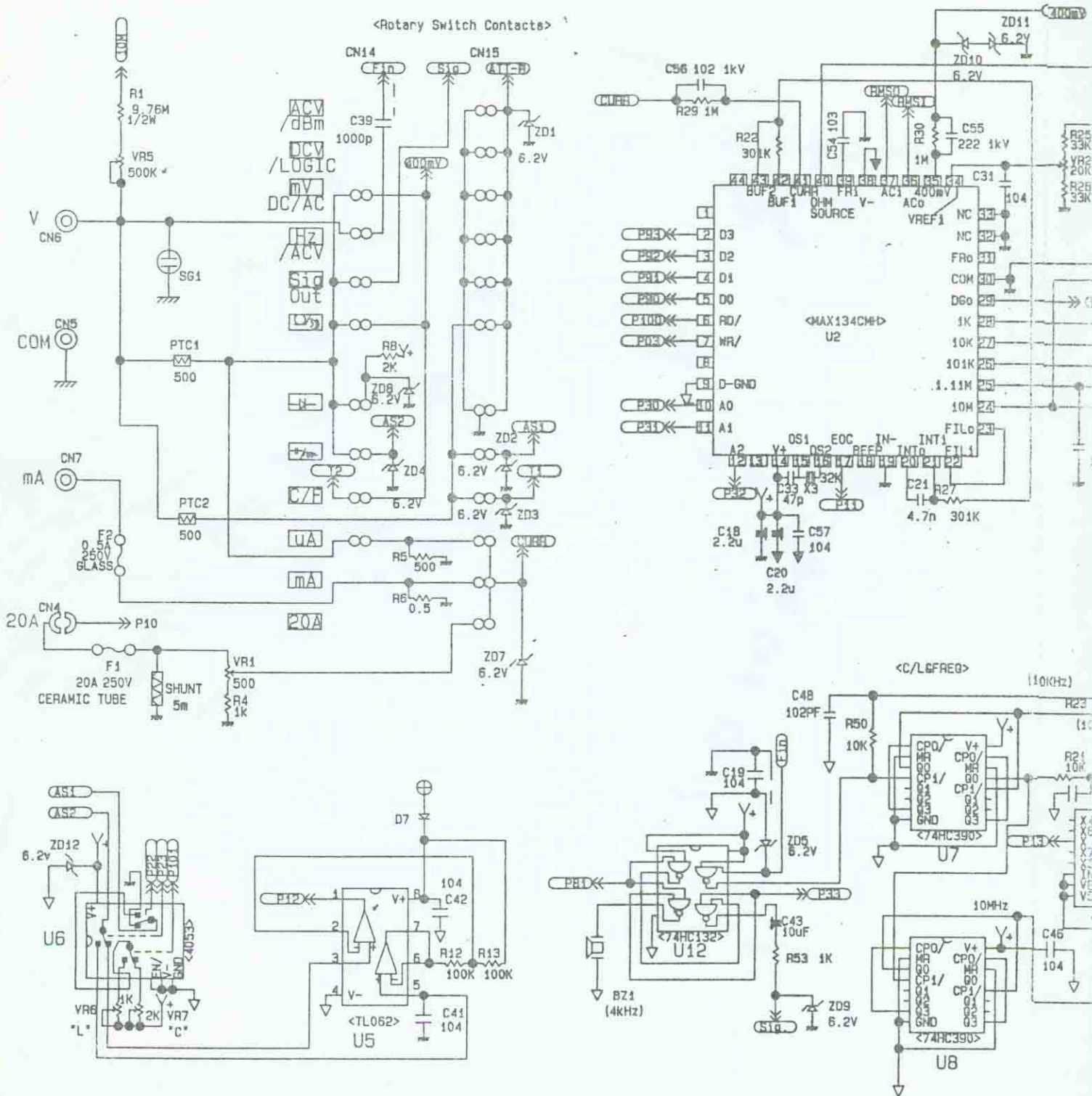
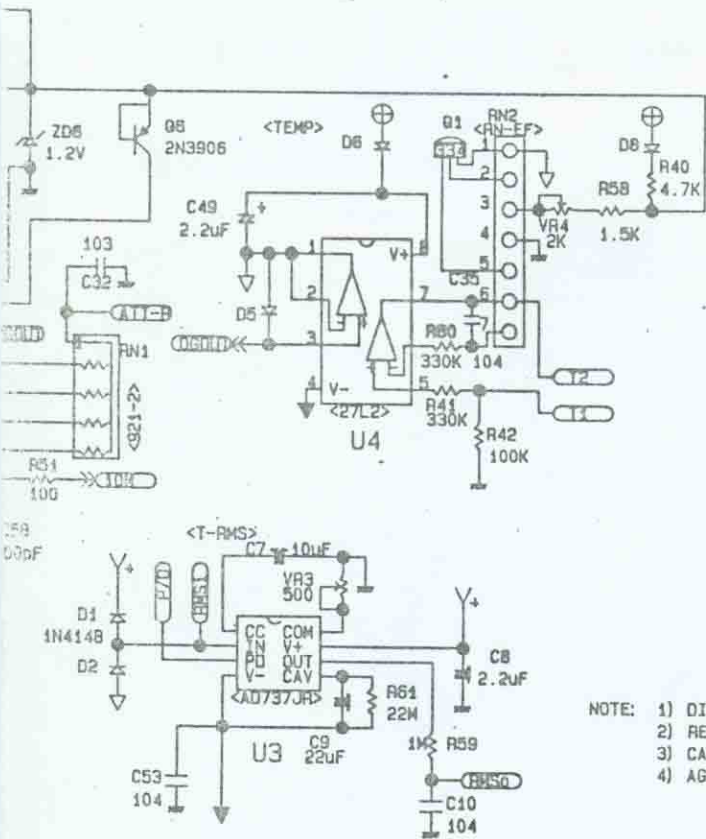


Protek506 Schematic Diagram -



MARK	REVISIONS	REASONABLE REVISIONS	DATE	NAME	SIGN
△					
△					
△					
△					

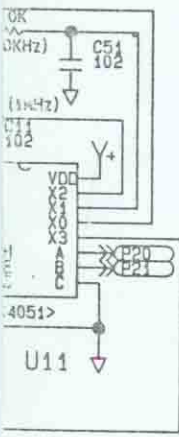
Sub -



<CONNECTOR>
- Female -

CN8	CN9
1 → ○ P11	1 → ○ ⊕
→ ○ P12	→ ○ V+
→ ○ P13	→ ○ VSS
→ ○ P20	→ ○ DGND
→ ○ P21	→ ○ P101
→ ○ P22	→ ○ P33
→ ○ P23	→ ○ P100
→ ○ P31	→ ○ P93
→ ○ P30	→ ○ P92
→ ○ P32	→ ○ P91
→ ○ P03	→ ○ P90
12 → ○ P10	12 → ○ P81

NOTE: 1) DIODES WITHOUT TYPE NO. : 1N4148 OR 1S1588
2) RESISTORS WITHOUT WATTAGE RATING: 1/8W
3) CAPACITORS WITHOUT WITHSTANDING VOLT: 16V
4) AGND (ANALOG GND): DGND (DIGITAL GND): VSS (NEG. POWER SUPPLY):

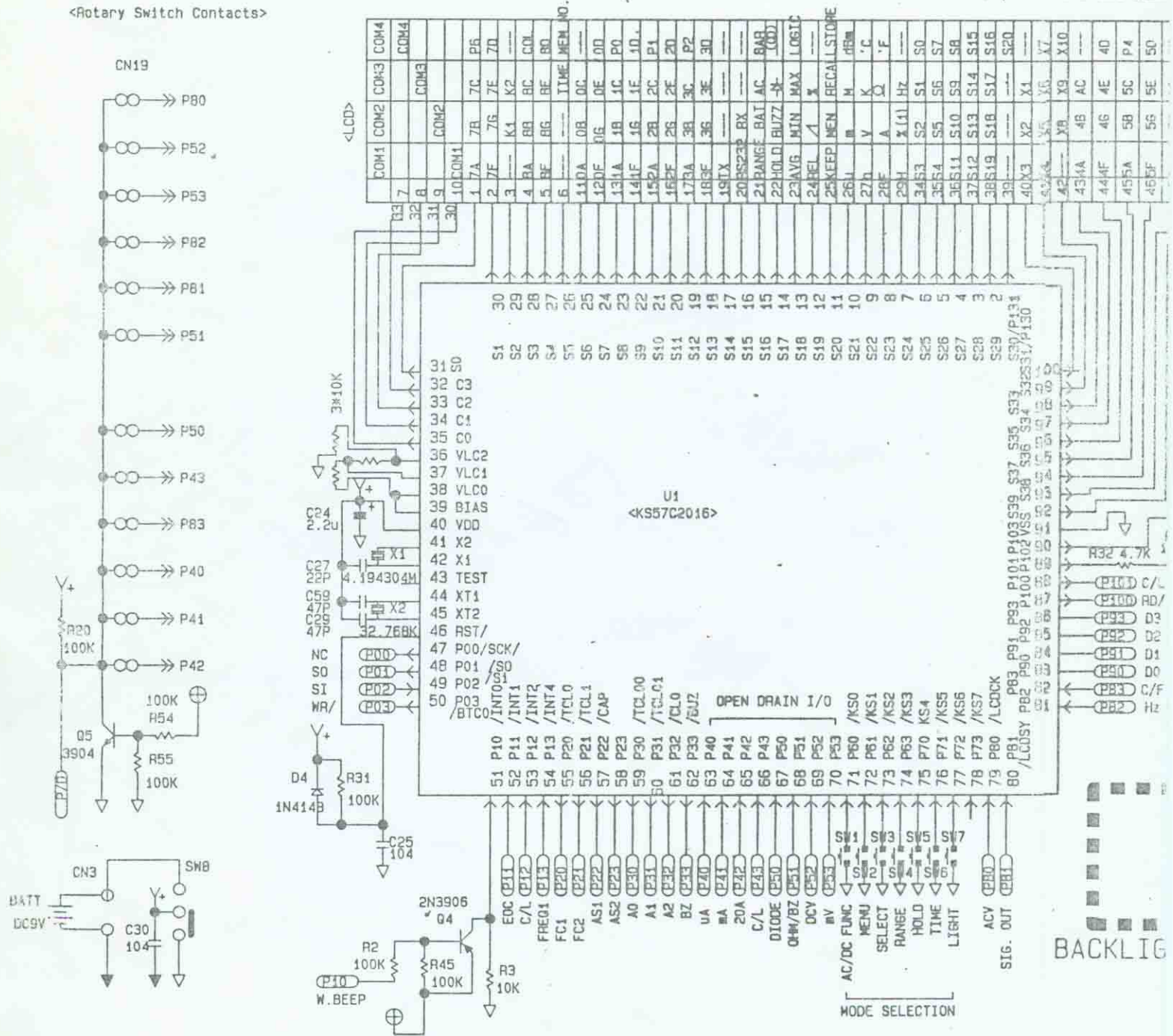


NO.	DESCRIPTION	STOCK NO.	MATL.	Q'TY	FINISH	REMARKS
DRAWN	DESIGNED	CHECKED	APPROVED	THIRD ANGLE		
1. 1995	2. 1995	1995	1995	SCALE: /	UNIT: M/M	STOCK NO. OR PART NO.
PROJECTION				RELATIONAL DWG NO.		
TITLE: PD-506 SUB				DWG NO. 5033028-E002-D		

Protek506 Schematic Diagram - 1

<Rotary Switch Contacts>

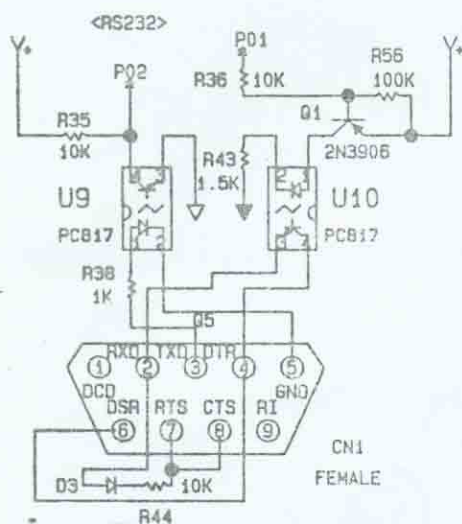
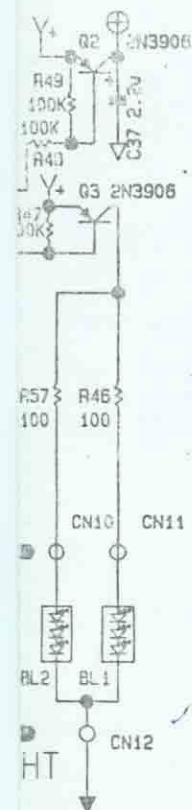
CN2 <LCD ZEBRA>



MARK	REVISIONS	REASONABLE REVISIONS	DATE	NAME	SIGN
△					
△					
△					
△					

Main -

48	49	50	51
48F	6G	6E	6D



<CONNECTOR>

- Male -

CN8		CN9	
1	←○ P11	1	←○ ⊕
	←○ P12		←○ V+
	←○ P13		←○ VSS
	←○ P20		←○ DGND
	←○ P21		←○ P101
	←○ P22		←○ P33
	←○ P23		←○ P100
	←○ P31		←○ P93
	←○ P30		←○ P92
	←○ P32		←○ P91
	←○ P03		←○ P90
12	←○ P10	12	←○ P81

NOTE: 1) DIODES WITHOUT TYPE NO.: 1N4148 OR 1S1588
2) RESISTORS WITHOUT WATTAGE RATING: 1/8W
3) CAPACITORS WITHOUT WITHSTANDING VOLT: 16V
4) AGND (ANALOG GND): DGND (DIGITAL GND): VSS (NEG. POWER SUPPLY):

[illegible]

1995 4 20