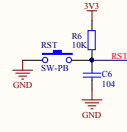


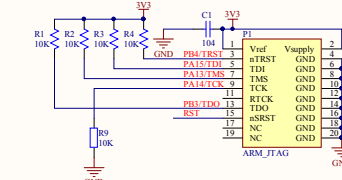
供电稳压供电



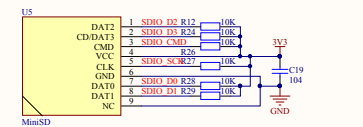
ISP串口下载程序接口



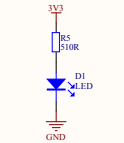
复位按键



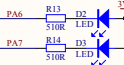
JTAG/SWD调试接口



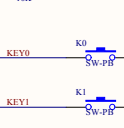
MinSD



供电指示灯



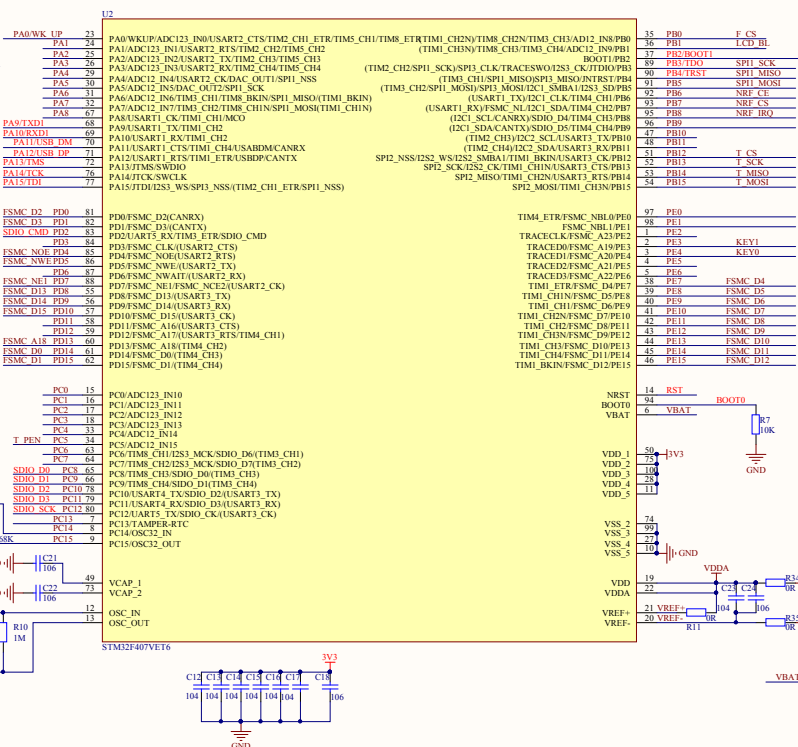
LED指示灯

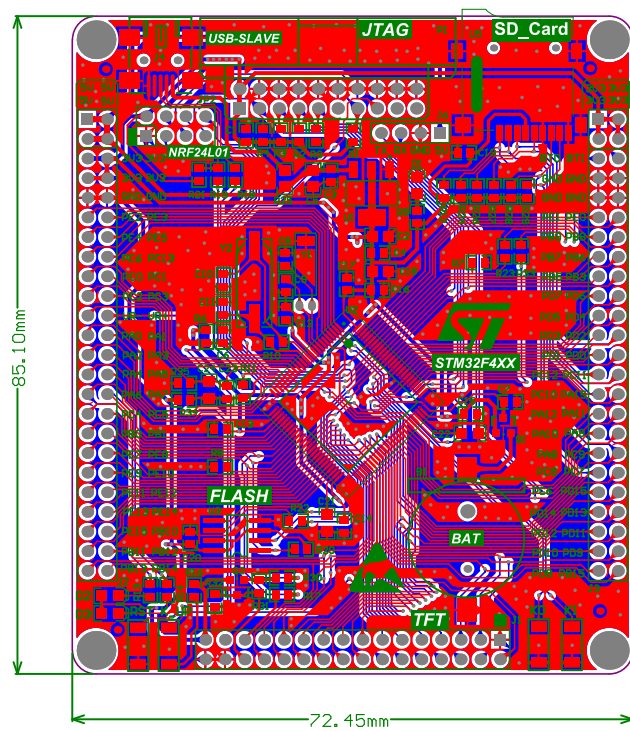


用户按键

CPU简介

STM32F407VET6
RAM: 196K FLASH: 512K
内核: ARM 32位的 Cortex-M3 CPU
最高168MHz工作频率





Comment	Description	Designator	Footprint	LibRef	Quantity
BAT		B1	BAT	BATTERY	1
104	Capacitor, Capacitor, Capacitor, Capacitor, Capacitor, Capacitor, Capacitor, Capacitor, Capacitor (Semiconductor SIM Model), [NoValue], Capacitor	C1, C3, C4, C6, C7, C12, C13, C14, C15, C16, C17, C19, C20, C23	RC0603	Cap, CAP, CAP, CAP, Cap, Cap, Cap, Cap, Cap, Cap, Cap, Cap Semi, CAP, Cap	14
106	[NoValue], [NoValue], Capacitor, Capacitor, Capacitor, Capacitor	C2, C5, C18, C21, C22, C24	RC0805	ELECTRO2, ELECTRO2, Cap, Cap, Cap, Cap	6
12P		C8, C9	RC0603	CAP	2
22P	Capacitor	C10, C11	RC0603	CAP	2
LED		D1, D2, D3	LED0805	LED	3
Header 16X2	Header, 16-Pin, Dual row	J1	IDE2X16	Header 16X2	1
Header 24X2	Header, 24-Pin, Dual row	J2, J3	IDE2X24	Header 24X2	2
usb		J4	Mini_USB	usb	1
ISP_COM	Header, 4-Pin	J6	HDR1X4	Header 4	1
NRF2401	Header, 4-Pin, Dual row	JP2	IDE2X4	Header 4X2	1
SW-PB		K0, K1, K_UP, RST	SW-SPST	SW-PB	4
ARM_JTAG	JTAG	P1	JTAG-20P	JTAG	1
BAT54C		Q1	SOT-23-BAT54C	BAT54C	1
PNP	PNP Bipolar Transistor	Q2	PNP_SOT23	PNP	1
10K	[NoValue], [NoValue], [NoValue], [NoValue], Resistor, Resistor, Resistor, Resistor, Resistor, Resistor, [NoValue], Resistor, Resistor, Resistor, Resistor	R1, R2, R3, R4, R6, R7, R8, R9, R12, R16, R20, R24, R26, R27, R28, R29	RC0603	RES, RES, RES, RES, Res2, Res2, Res2, Res2, Res2, Res2, RES, Res2, Res2, Res2, Res2, Res2, Res2	16
510R	Resistor	R5, R13, R14, R23, R33	RC0603	Res2	5
1M	Resistor	R10	RC0603	Res2	1
0R	Resistor	R11, R34, R35	RC0603	Res2	3
1.5K		R17, R21, R30, R32	RC0603	RES	4
22		R18, R19	RC0603	RES	2
22R		R22	RC0603	RES	1
500mA		R25	RC0805	RES	1
NC		R31	RC0603	RES	1
AMS1117-3.3V		U1	SOT-223	11	1
STM32F407VET6		U2		STM32F407VET6	1
W25Q16		U3	SOP8L	W25X16	1
MiniSD		U5	TF_SD	MiniSD	1
32.768K	晶振	Y1	JZ32768	CRYSTAL	1
8M	Crystal	Y2	49S_SMD	CRYSTAL	1