

# AlaVar generated report

C:\Users\Ulrich\Dokumente\MW\_neu\S18sel.txt

File 'C:\Users\Ulrich\Dokumente\MW\_neu\S18sel.txt' created on 08.06.2019 17:35:40

Column # 2 was processed

Data length N = 57525 points.

Data was multiplied by 42

A constant value of -392000 was added to the data

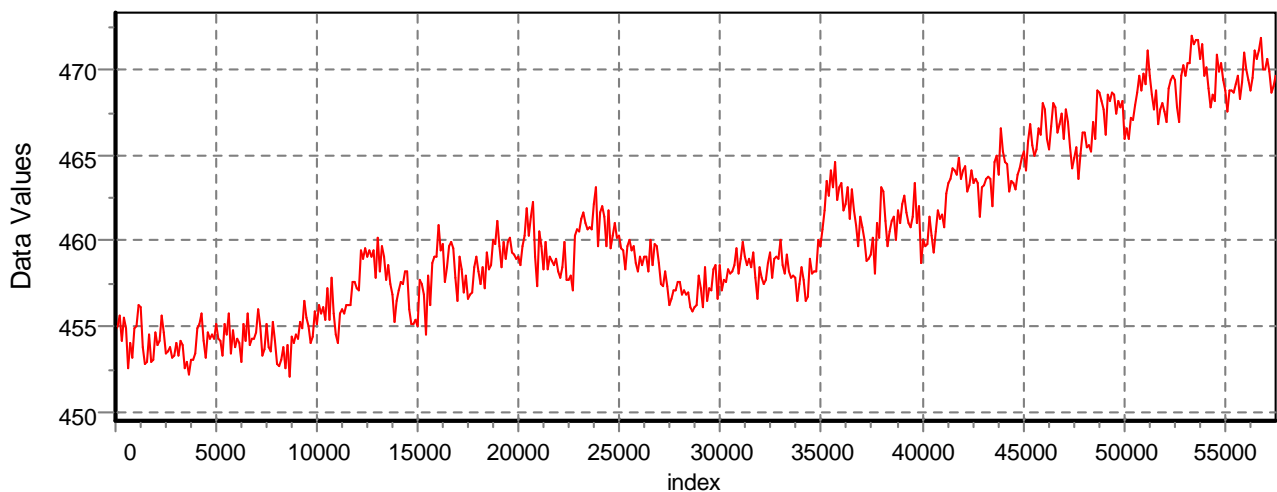
The mean Value of the processed data = 460.48

The Stanadrd Deviation of the processed data = 4.96317

The number of removed outliers is 0

## AlaVar 5.2

### Data Values

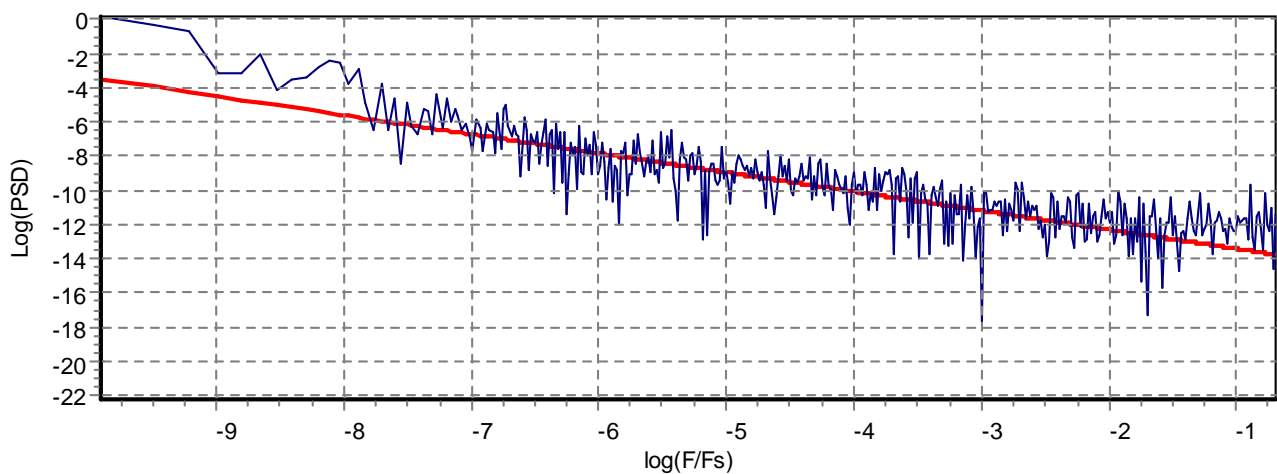


*Produced by AlaVar 5.2*

Figure 1 : Processed Data

## AlaVar 5.2

### PSD of Data



*Produced by AlaVar 5.2*

Figure 2 : Data PSD

The computation of the 3 ALLAN STD DEVs lasted 0.049000 seconds

The error bars were computed for a : Flicker FM

The computation of the Error bars lasted 0.001 seconds

Tau = average Time

ADEV = Overlapping ALLAN STD DEV.

ADEV\_Min = ADEV lower bound.

ADEV\_Max = ADEV upper bound.

MDEV = Modified ALLAN STD DEV.

TDEV = Time ALLAN STD DEV.

HDEV = Overlapping HADAMARD STD DEV.

Tau	ADEV	ADEV_Min	ADEV_Max	MDEV	TDEV	HDEV
1	0.55352	0.55178	0.55528	0.55352	0.31957	0.54214
2	0.43377	0.43216	0.4354	0.3562	0.4113	0.41327
4	0.3774	0.37542	0.37941	0.30346	0.70081	0.34709
8	0.36242	0.35974	0.36515	0.29746	1.3739	0.32223
16	0.37352	0.36963	0.37752	0.30857	2.8505	0.33466
32	0.37734	0.37183	0.38311	0.31049	5.7364	0.33896
64	0.38227	0.37444	0.39062	0.3186	11.772	0.33274
128	0.41745	0.40549	0.43053	0.35961	26.576	0.33513
256	0.52144	0.50062	0.54509	0.46337	68.487	0.39083
512	0.69085	0.65259	0.73674	0.61706	182.41	0.52728
1024	0.89691	0.82831	0.98593	0.77523	458.32	0.78561
2048	0.9666	0.86502	1.1151	0.83977	992.95	0.78018
4096	1.3181	1.1287	1.6518	1.2713	3006.5	0.73926
8192	2.227	1.7943	3.2785	1.9281	9119.4	1.1148
16384	2.7977	2.0877	6.0306	2.0562	19450	1.5869

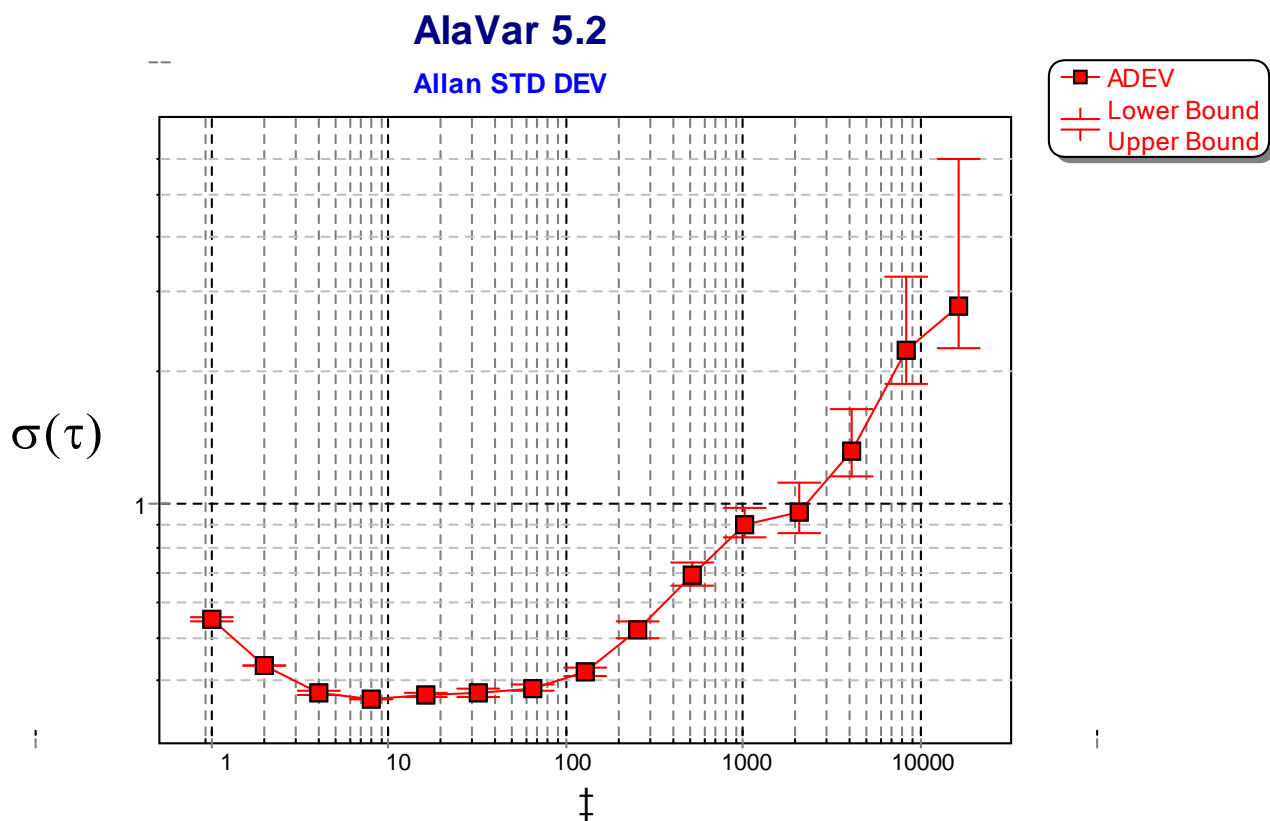


Figure 3 : Allan Standard Deviation