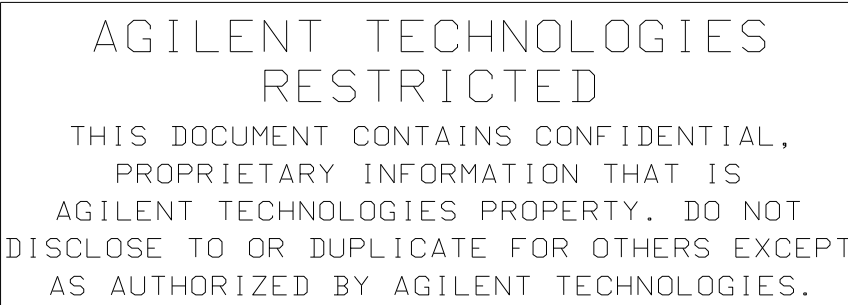



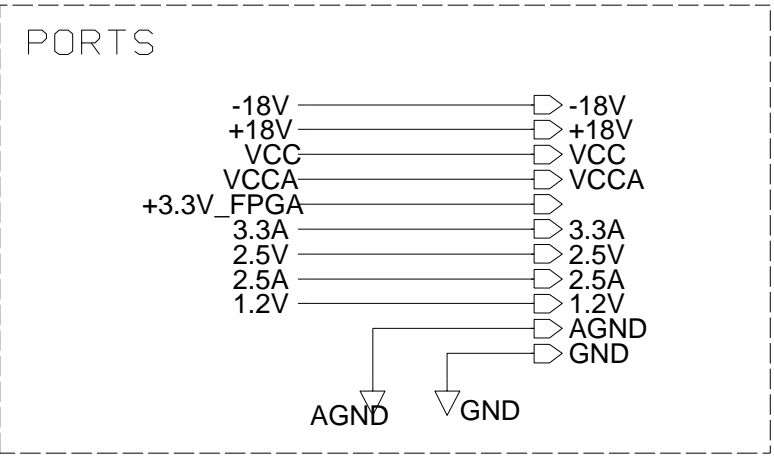
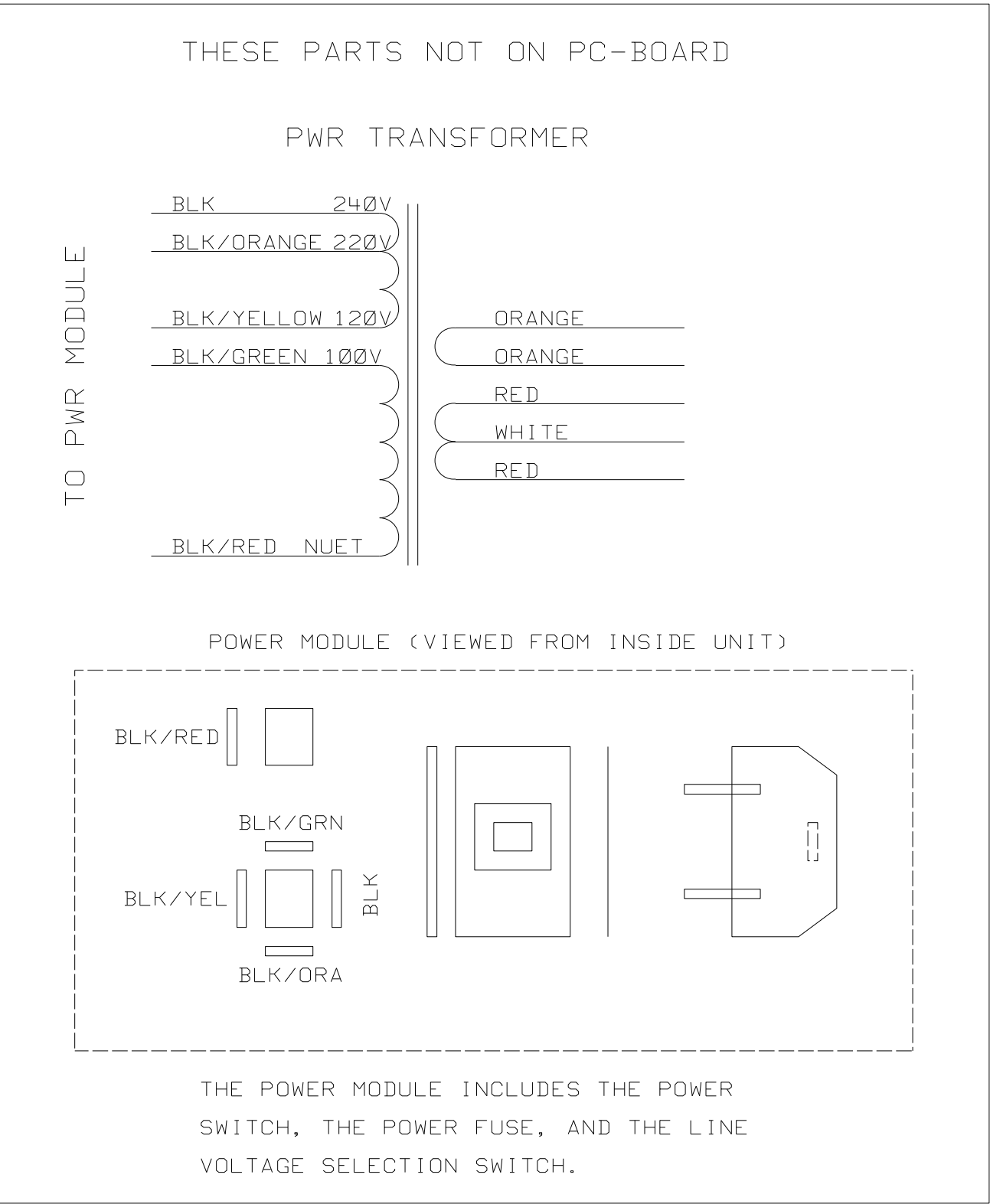
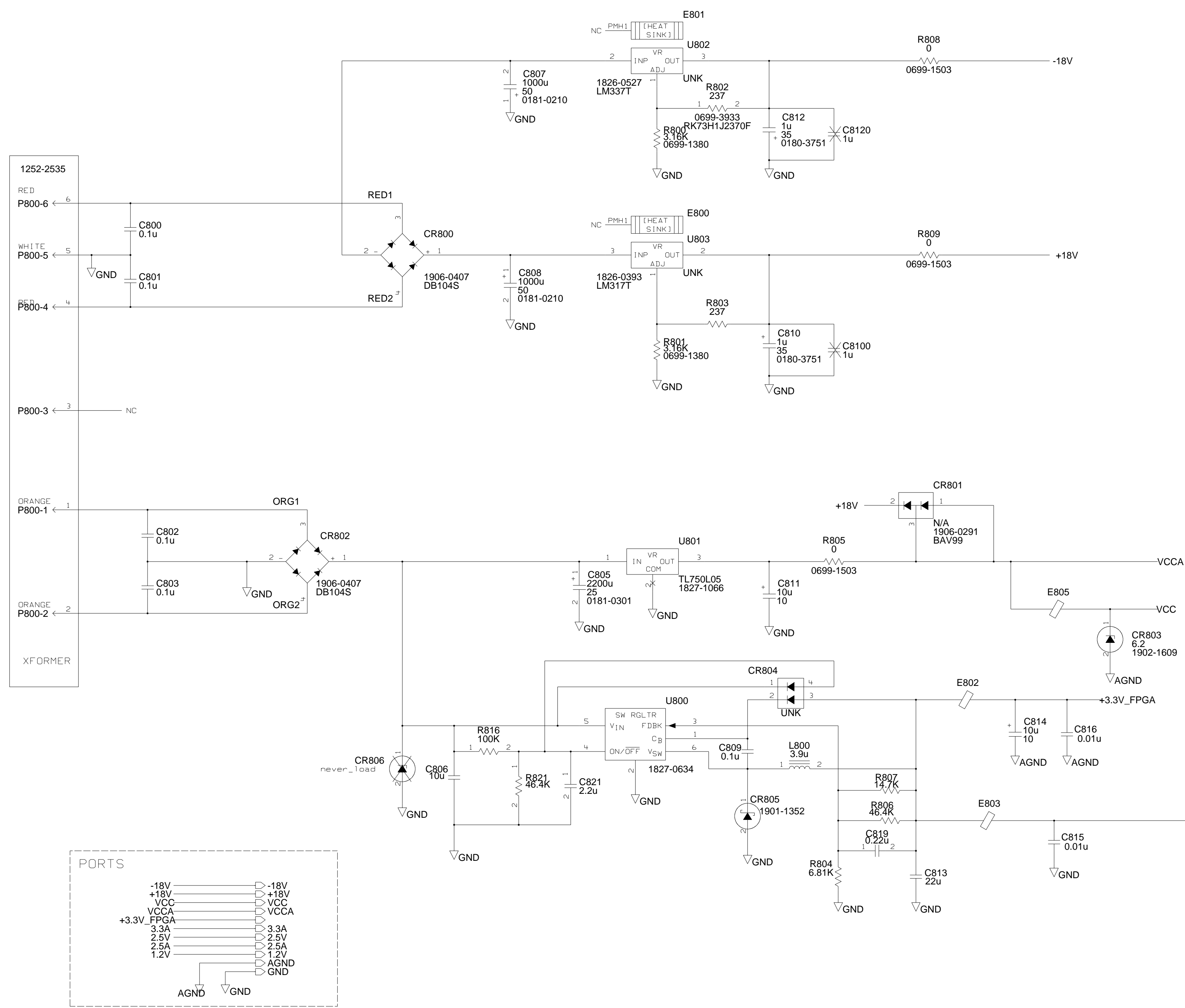
REV	INFORMATION	APPROVED	DATE
D			



4/13/2006 16:09:20 LAST CHECKED		10/04/05 DATE		SCHEMATIC, PWA 34410A		 Agilent
Mark Jur Jovec ENGINEER		SHEET 1 OF 1		FRONT / REAR SELECTION PAGE DESCRIPTION 2		
Mark Jur Jovec DRAWN BY		SIZE C		TITLE \$LVL0/ganda/f/34410-66521/current/ PATHNAME front_rear_sheet1		
ASSY REV		RRD REV		PAGE 1 OF 1		34410-66521 PART NUMBER C-34410-66521-1 DWG. NO.

ISOLATED POWER SUPPLY

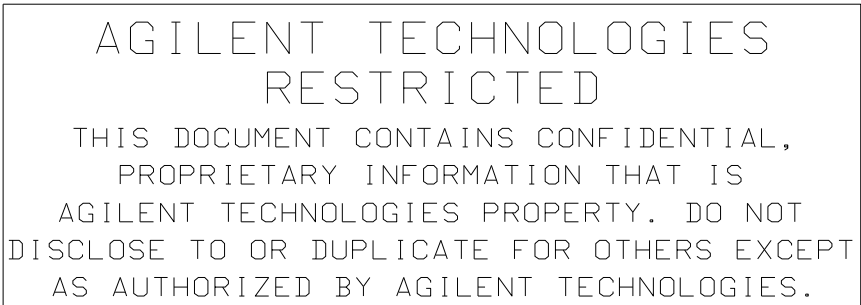
REVISIONS
SEE PAGE 1 FOR REVISION HISTORY




AGILENT TECHNOLOGIES
RESTRICTED
THIS DOCUMENT CONTAINS CONFIDENTIAL,
PROPRIETARY INFORMATION THAT IS
AGILENT TECHNOLOGIES PROPERTY. DO NOT
DISCLOSE TO OR DUPLICATE FOR OTHERS EXCEPT
AS AUTHORIZED BY AGILENT TECHNOLOGIES.

2/17/2006 10:52:03 LAST CHECKED	10/04/05 DATE	SCHMATIC, PWA 34410A POWER SUPPLY PAGE DESCRIPTION 2	
Mark Jurjovec ENGINEER	SHEET 2 OF 2	TITLE \$SLVLD/gendalf/34410-66521/current/ 1g_power_sheetB	
Mark Jurjovec DRAWN BY	SIZE C	34410-66521 PART NUMBER	
	ASSY. REV	BRD. REV	PAGE 2 OF 13 DWG. NO. C-34410-66521-1

SEE PAGE 1 FOR REVISION HISTORY

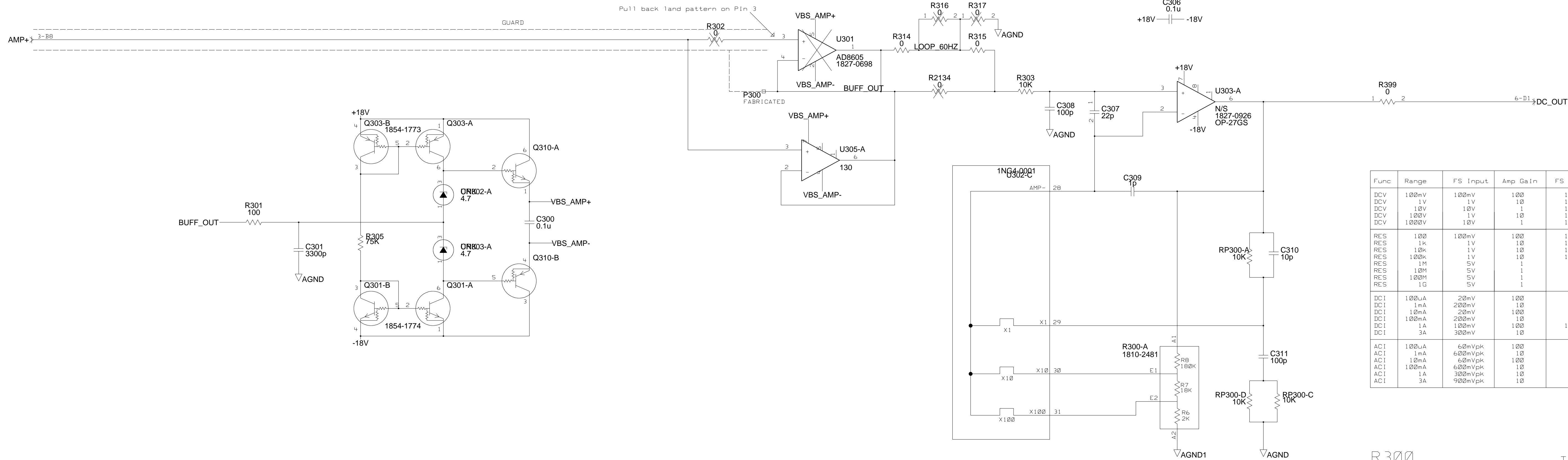


12/19/2005 17:57:29 LAST CHECKED		10/04/05 DATE		SCHEMATIC, PWA 34410A		 Agilent
Mark Jurjovec ENGINEER		SHEET 2 OF 7		FUNCTION SWITCHING PAGE DESCRIPTION 2		
Mark Jurjovec DRAWN BY		SIZE C		TITLE S:\VLD\ganda1f\34410-66521\current\meas_eng_sch2		
				3 OF 3		34410-66521 PART NUMBER C-34410-66521-1 DWG

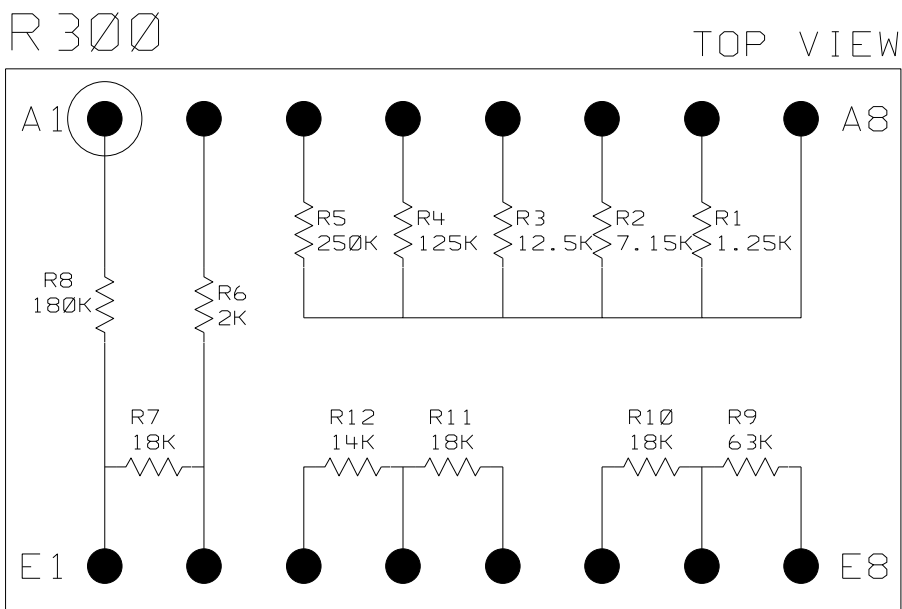
INPUT AMPLIFIER/OHMS

60HZ LOOP COMPENSATION					
BIG 60HZ LOOP	R2134	R314	R315	R316	R317
SMALL 60HZ LOOP		LOAD	LOAD	LOAD	
NO 60HZ LOOP	LOAD				LOAD
RESISTORS ARE NO-LOAD UNLESS SPECIFIED					

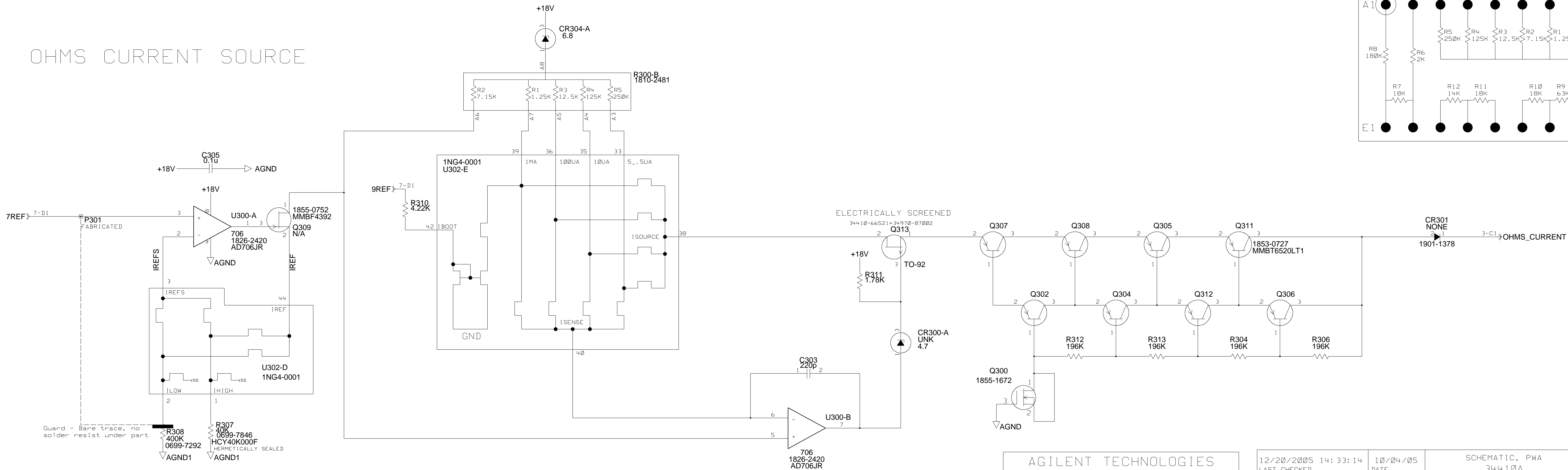
REVISIONS
SEE PAGE 1 FOR REVISION HISTORY



Func	Range	FS Input	Amp Gain	FS Output
DCV	100mV	100mV	100	10V
DCV	1V	1V	10	10V
DCV	10V	10V	1	10V
DCV	100V	10V	1	10V
DCV	1000V	10V	1	10V
RES	100	100mV	100	10V
RES	1K	1V	10	10V
RES	10K	1V	10	10V
RES	100K	1V	10	10V
RES	1M	5V	1	5V
RES	10M	5V	1	5V
RES	100M	5V	1	5V
RES	1G	5V	1	5V
DCI	100uA	20mV	100	2V
DCI	1mA	200mV	10	2V
DCI	10mA	20mV	100	2V
DCI	100mA	200mV	10	2V
DCI	1A	100mV	100	10V
DCI	3A	300mV	10	3V
ACI	100uA	60mVpk	100	6Vpk
ACI	1mA	600mVpk	10	6Vpk
ACI	10mA	60mVpk	100	6Vpk
ACI	100mA	600mVpk	10	6Vpk
ACI	1A	300mVpk	10	3Vpk
ACI	3A	900mVpk	10	9Vpk




OHMS CURRENT SOURCE



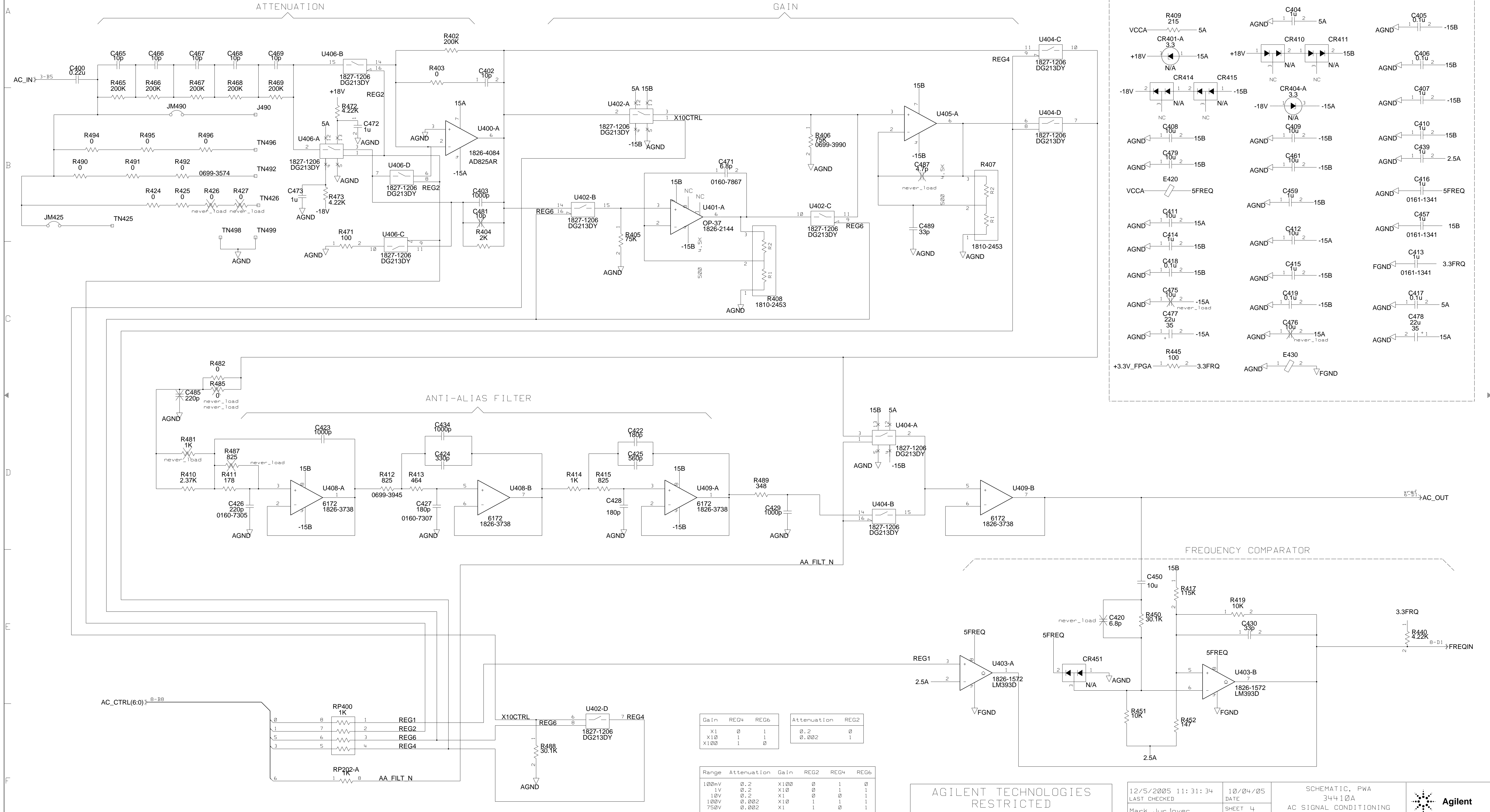
AGILENT TECHNOLOGIES
RESTRICTED

THIS DOCUMENT CONTAINS CONFIDENTIAL, PROPRIETARY INFORMATION THAT IS AGILENT TECHNOLOGIES PROPERTY. DO NOT DISCLOSE TO OR DUPLICATE FOR OTHERS EXCEPT AS AUTHORIZED BY AGILENT TECHNOLOGIES.


12/20/2005 14:33:14 LAST CHECKED	10/04/05 DATE	SCHEMATIC, PWA 34410A INPUT AMPLIFIER OHMS CURRENT SOURCE			 Agilent
Mark Jurjovec ENGINEER	SHEET 3 OF 7	TITLE			
Mark Jurjovec DRAWN BY	SIZE C	\$LVLID/gendelf/34410-66521/current/ PATHNAME meas_eng sheet3			34410-66521 PART NUMBER
ASSY. REV	BRD. REV	PAGE 4 OF 13	C-34410-66521-1 DWG. NO.		

AC SIGNAL CONDITIONING

REVISIONS
SEE PAGE 1 FOR REVISION HISTORY

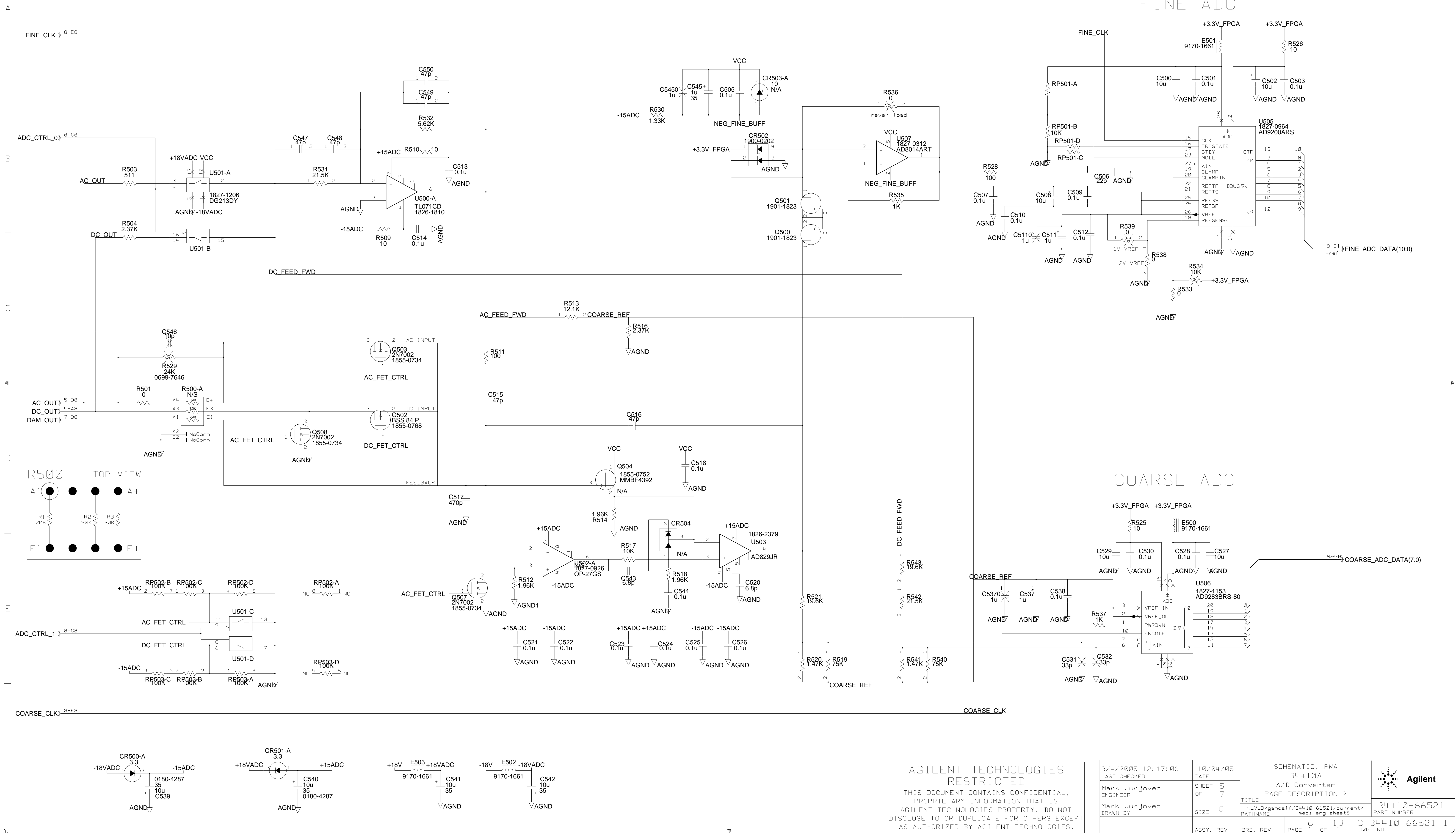


AGILENT TECHNOLOGIES
RESTRICTED
THIS DOCUMENT CONTAINS CONFIDENTIAL,
PROPRIETARY INFORMATION THAT IS
AGILENT TECHNOLOGIES PROPERTY. DO NOT
DISCLOSE TO OR DUPLICATE FOR OTHERS EXCEPT
AS AUTHORIZED BY AGILENT TECHNOLOGIES.

12/5/2005 11:31:34 LAST CHECKED	10/04/05 DATE	SCHEMATIC, PWA 34410A		 Agilent
Mark Jurjovec ENGINEER	SHEET 4 OF 7	AC SIGNAL CONDITIONING PAGE DESCRIPTION 2		
Mark Jurjovec DRAWN BY	SIZE C	TITLE \$LVL0/gandalf/34410-66521/current/ PATHNAME meas_eng sheet4		34410-66521 PART NUMBER
ASSY. REV		BRD. REV	PAGE 5 OF 13	C-34410-66521-1 DWG. NO.

A/D CONVERTER

REVISIONS
SEE PAGE 1 FOR REVISION HISTORY



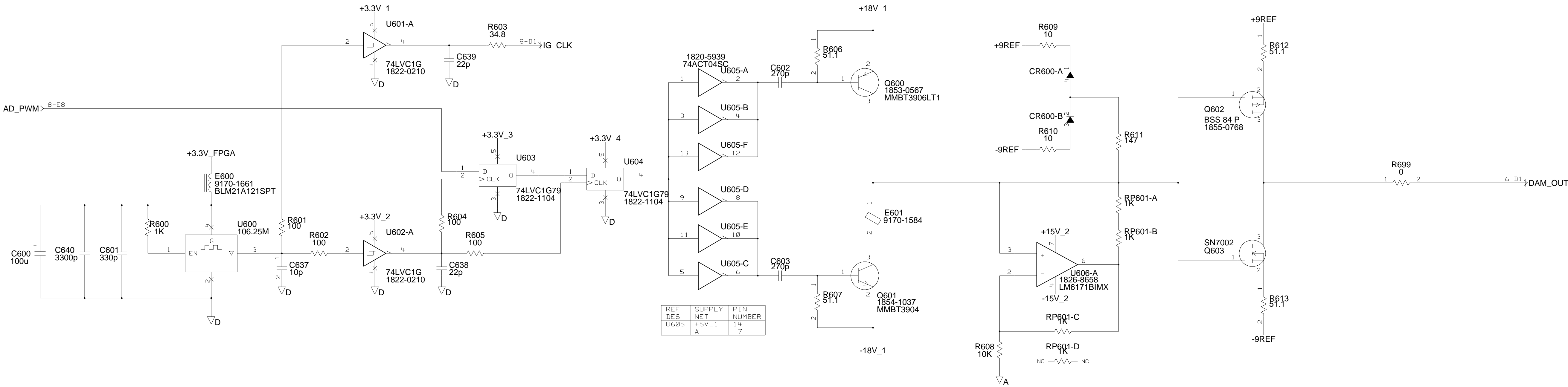
AGILENT TECHNOLOGIES
RESTRICTED

THIS DOCUMENT CONTAINS CONFIDENTIAL, PROPRIETARY INFORMATION THAT IS AGILENT TECHNOLOGIES PROPERTY. DO NOT DISCLOSE TO OR DUPLICATE FOR OTHERS EXCEPT AS AUTHORIZED BY AGILENT TECHNOLOGIES.

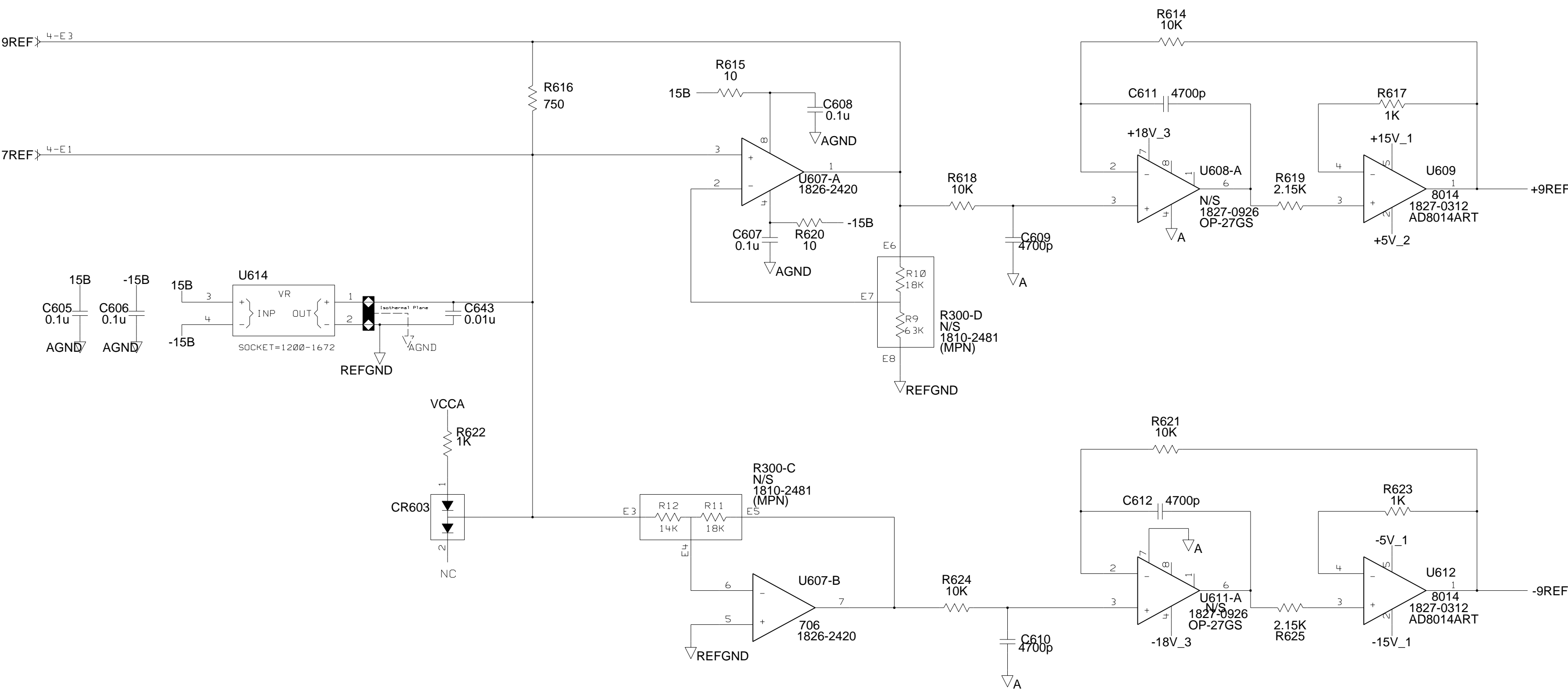
3/4/2005 12:17:06 LAST CHECKED	10/04/05 DATE	SCHMATIC, PWA 34410A A/D Converter PAGE DESCRIPTION 2	
Mark Jurjovec ENGINEER	SHEET 5 OF 7	TITLE SLVLD/gendelf/34410-66521/current/ PATHNAME meas_eng sheet5	
Mark Jurjovec DRAWN BY	SIZE C	6 OF 13	34410-66521 PART NUMBER
ASSY. REV	BRD. REV	PAGE	DWG. NO.

DAM SWITCH

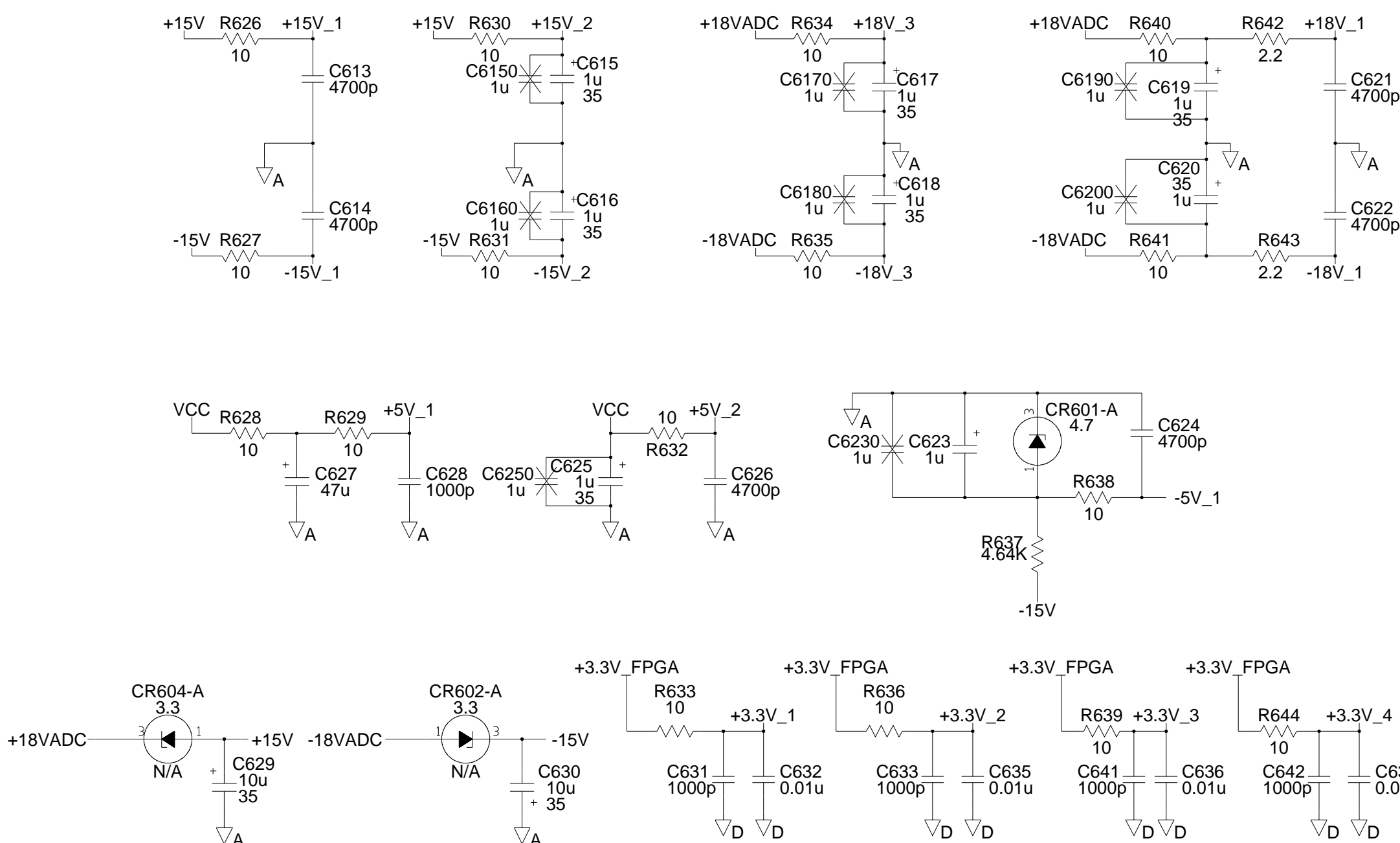
REVISIONS
SEE PAGE 1 FOR REVISION HISTORY




REFERENCES

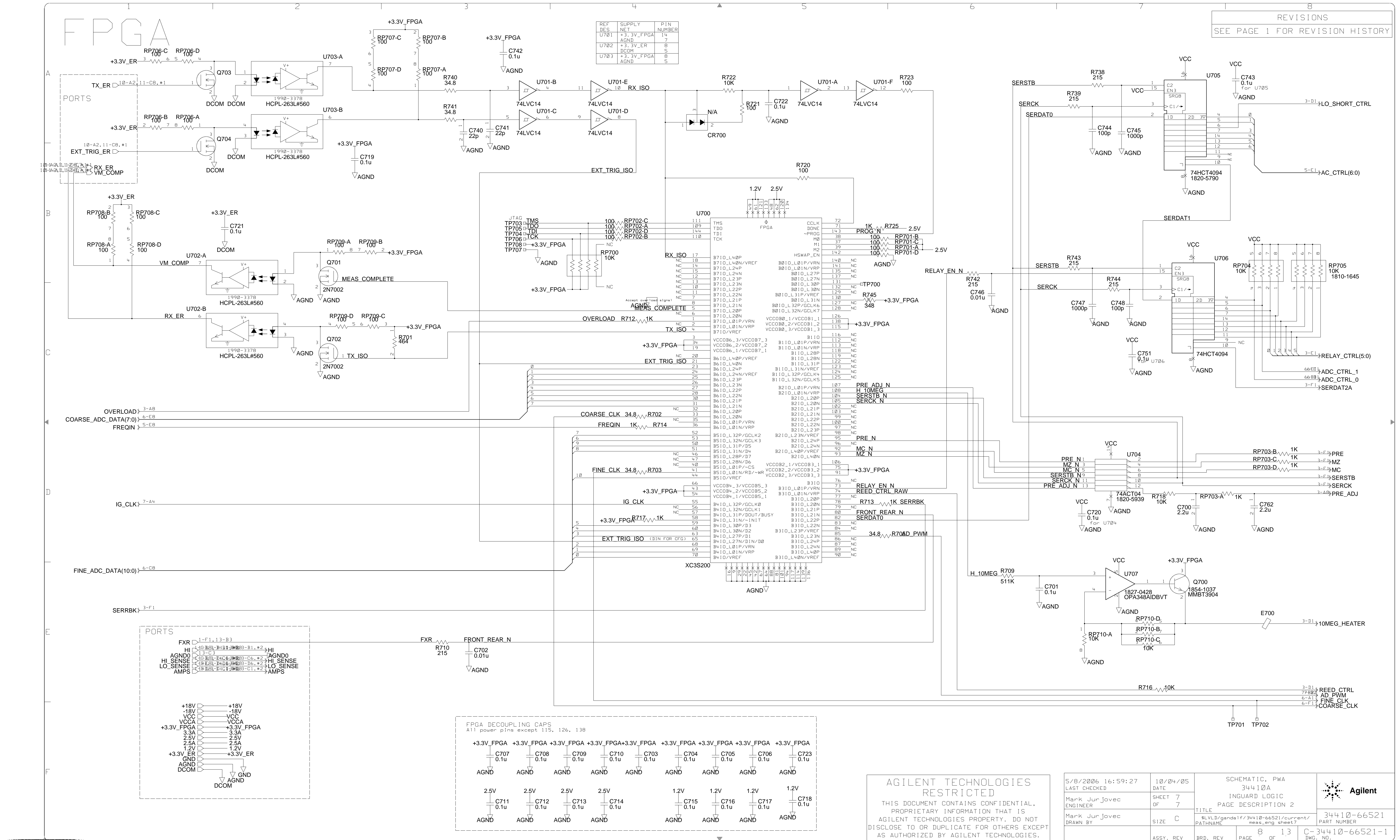


POWER SUPPLIES



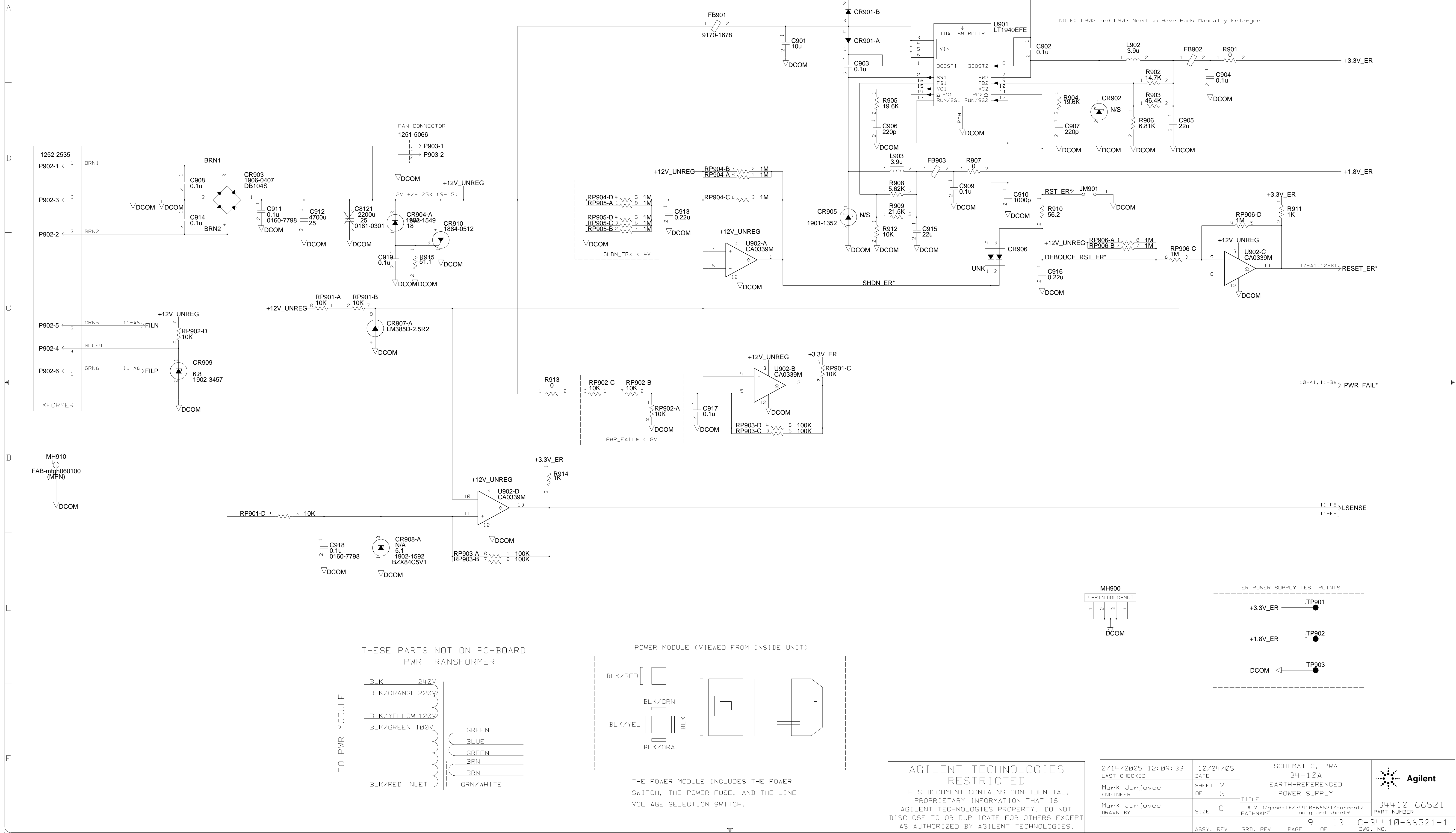
AGILENT TECHNOLOGIES
RESTRICTED
THIS DOCUMENT CONTAINS CONFIDENTIAL,
PROPRIETARY INFORMATION THAT IS
AGILENT TECHNOLOGIES PROPERTY. DO NOT
DISCLOSE TO OR DUPLICATE FOR OTHERS EXCEPT
AS AUTHORIZED BY AGILENT TECHNOLOGIES.

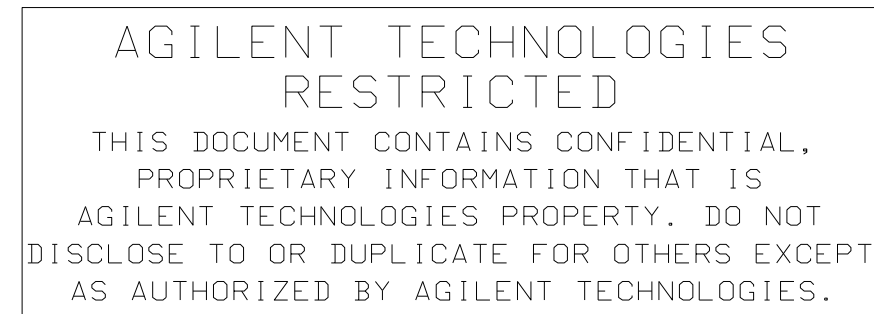
9/16/2004 14:33:33 LAST CHECKED	10/04/05 DATE	SCHEMATIC, PWA 34410A A/D CONVERTER DAM SWITCH		 Agilent
Mark Jurjovec ENGINEER	SHEET 6 OF 7	TITLE		
Mark Jurjovec DRAWN BY	SIZE C	\$SLVLD/gandaf/34410-66521/current/ meas_eng sheet6		34410-66521 PART NUMBER
ASSY. REV	BRD. REV	PAGE 7 OF 13	C-34410-66521-1 DWG. NO.	




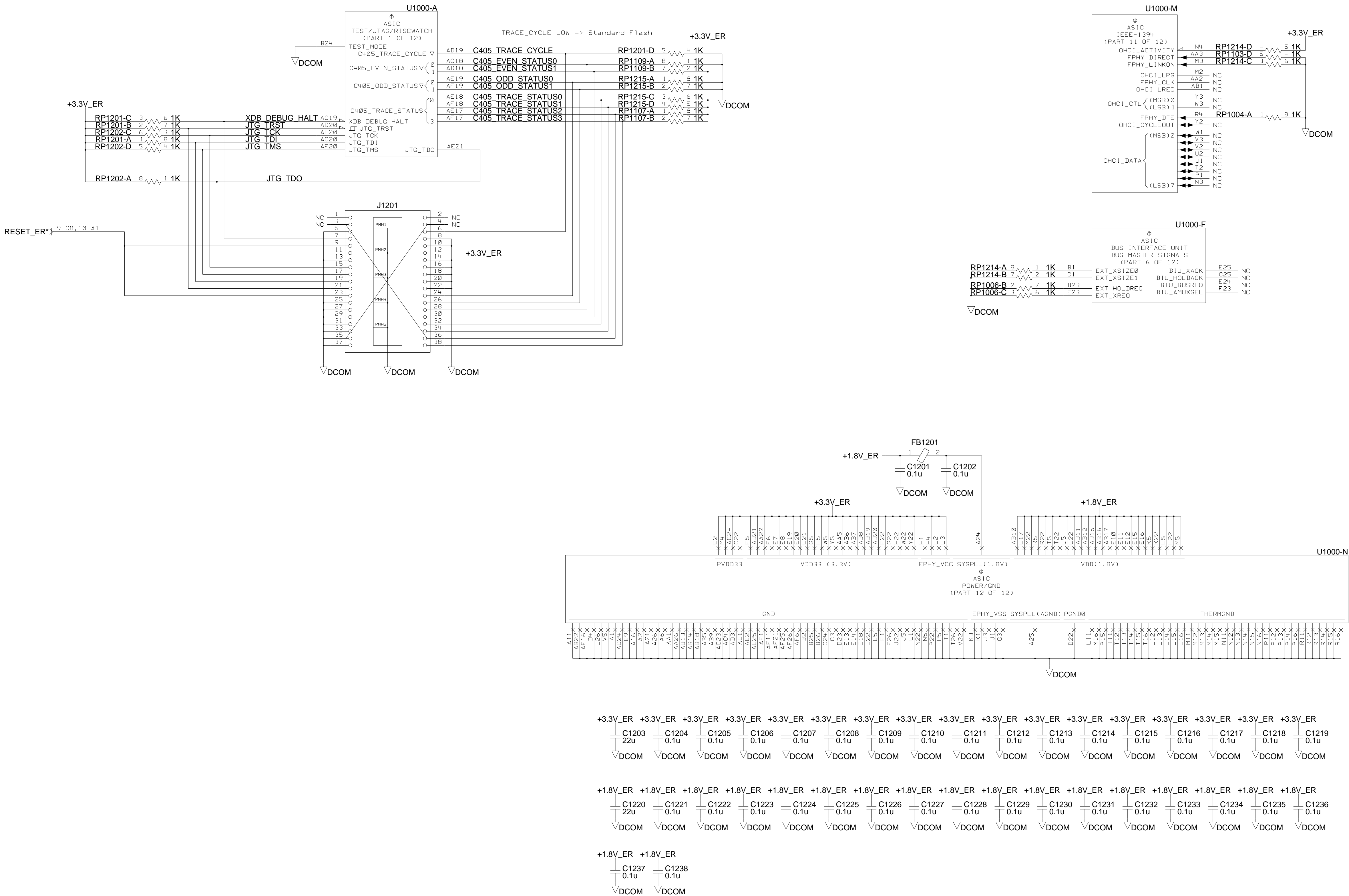
EARTH-REFERENCED POWER SUPPLY

REVISIONS
SEE PAGE 1 FOR REVISION HISTORY



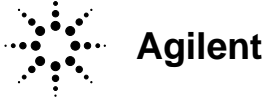


12/19/2005 13:49:12 LAST CHECKED		DATE 10/04/05		SCHEMATIC, PWA 34410A		 Agilent
Mark Jurjovec ENGINEER		SHEET OF 3		CONTROLLER: CLOCKS, IROS RAM, ROM, USB		
Mark Jurjovec DRAWN BY		SIZE D		TITLE SLVLD/genda/f/34410-66521/current/ outguard sheet 10		
		ASSY. REV		PRD. REV		10 OF 13 C-34410-66521-1 DWG. NO.

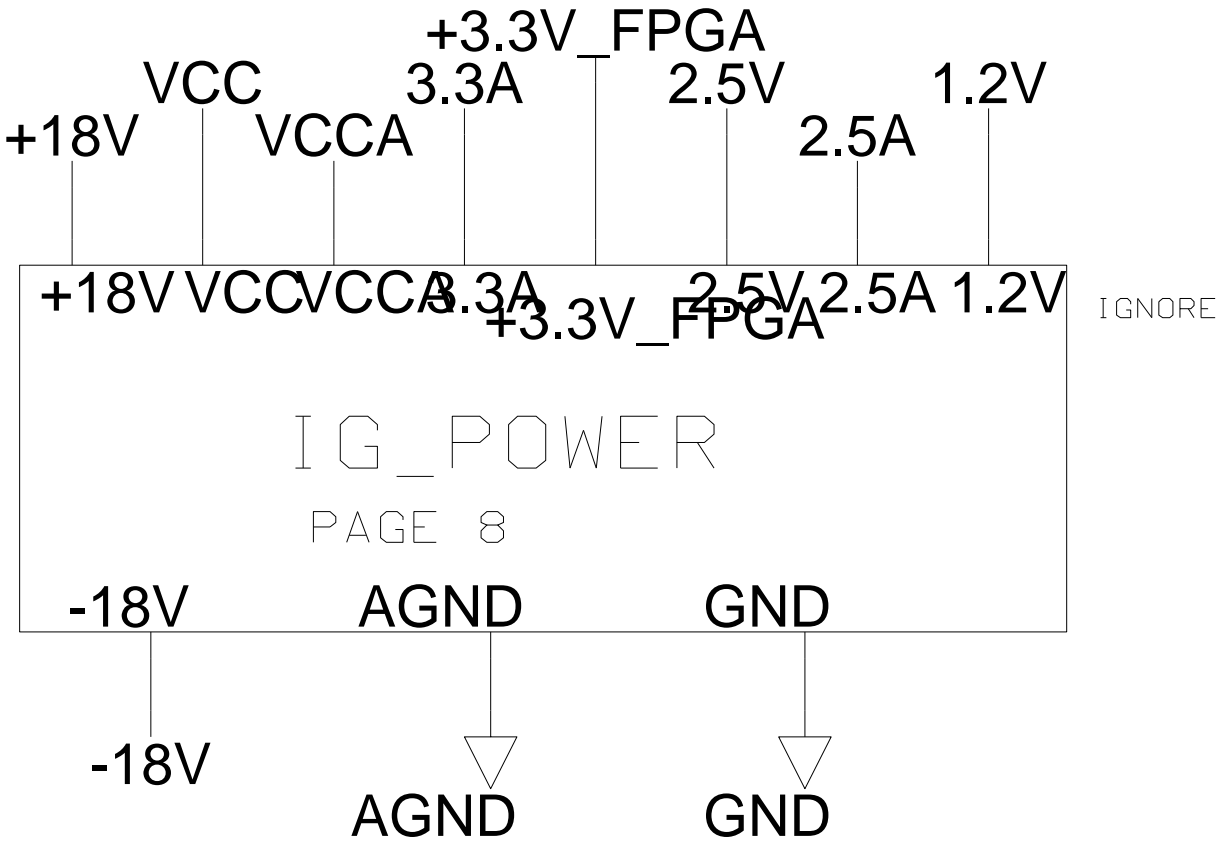
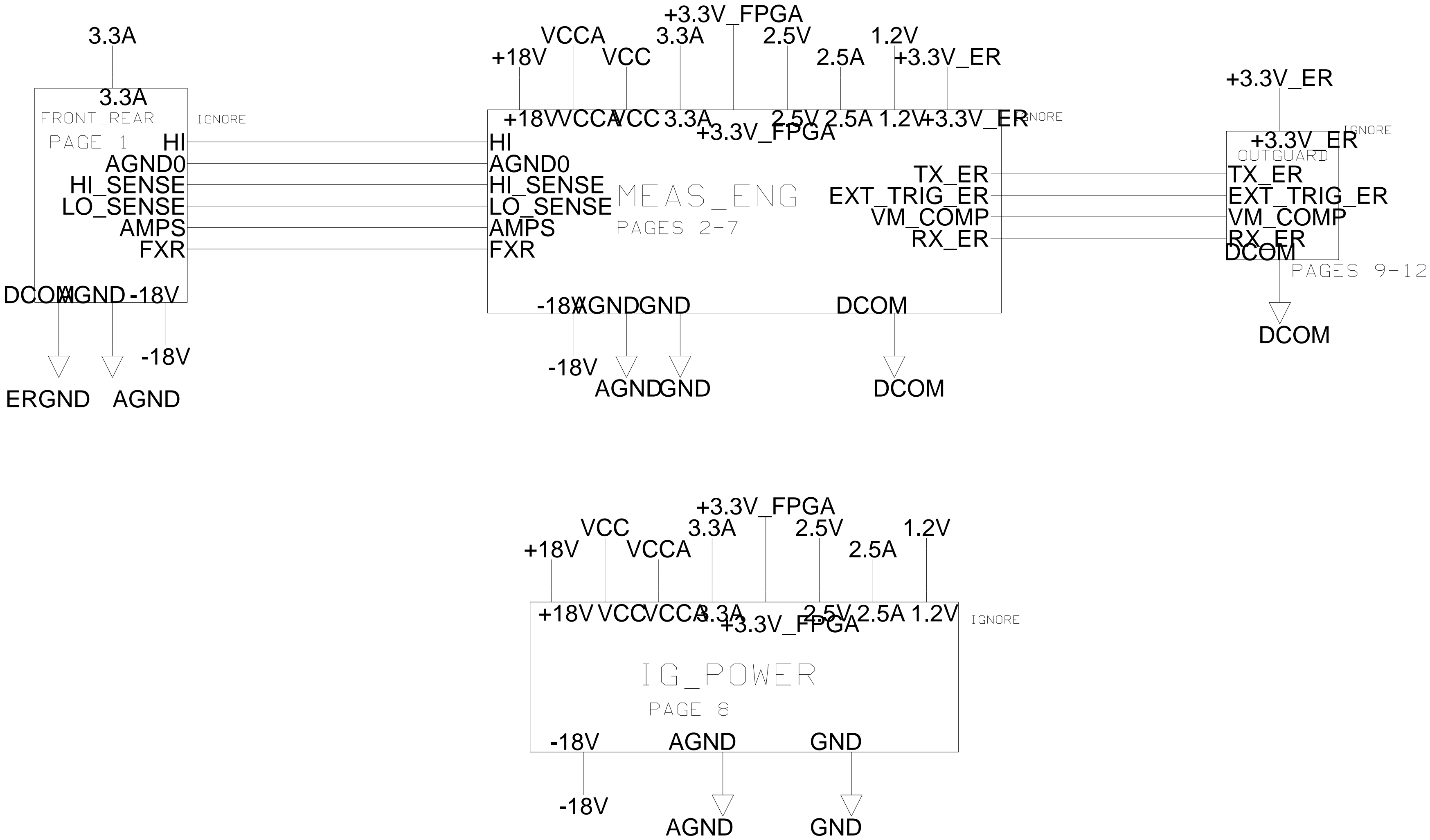


AGILENT TECHNOLOGIES
RESTRICTED

THIS DOCUMENT CONTAINS CONFIDENTIAL,
PROPRIETARY INFORMATION THAT IS
AGILENT TECHNOLOGIES PROPERTY. DO NOT
DISCLOSE TO OR DUPLICATE FOR OTHERS EXCEPT
AS AUTHORIZED BY AGILENT TECHNOLOGIES.

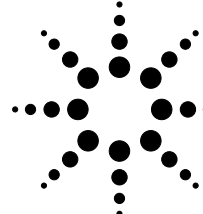

S/20/2004 13:11:16 LAST CHECKED		10/04/05 DATE		SCHEMATIC, PWA 34410A			
Mark Jurjovec ENGINEER		SHEET 5 OF 5		CONTROLLER: DEBUG INTERFACE, UNUSED SECTIONS, POWER			
Mark Jurjovec DRAWN BY		SIZE C		TITLE #LVLD/gandalf/34410-66521/current/ outguard sheet12			34410-66521 PART NUMBER
		ASSY. REV		BRD. REV			PAGE 12 OF 13
						C-34410-66521-1 DWG. NO.	

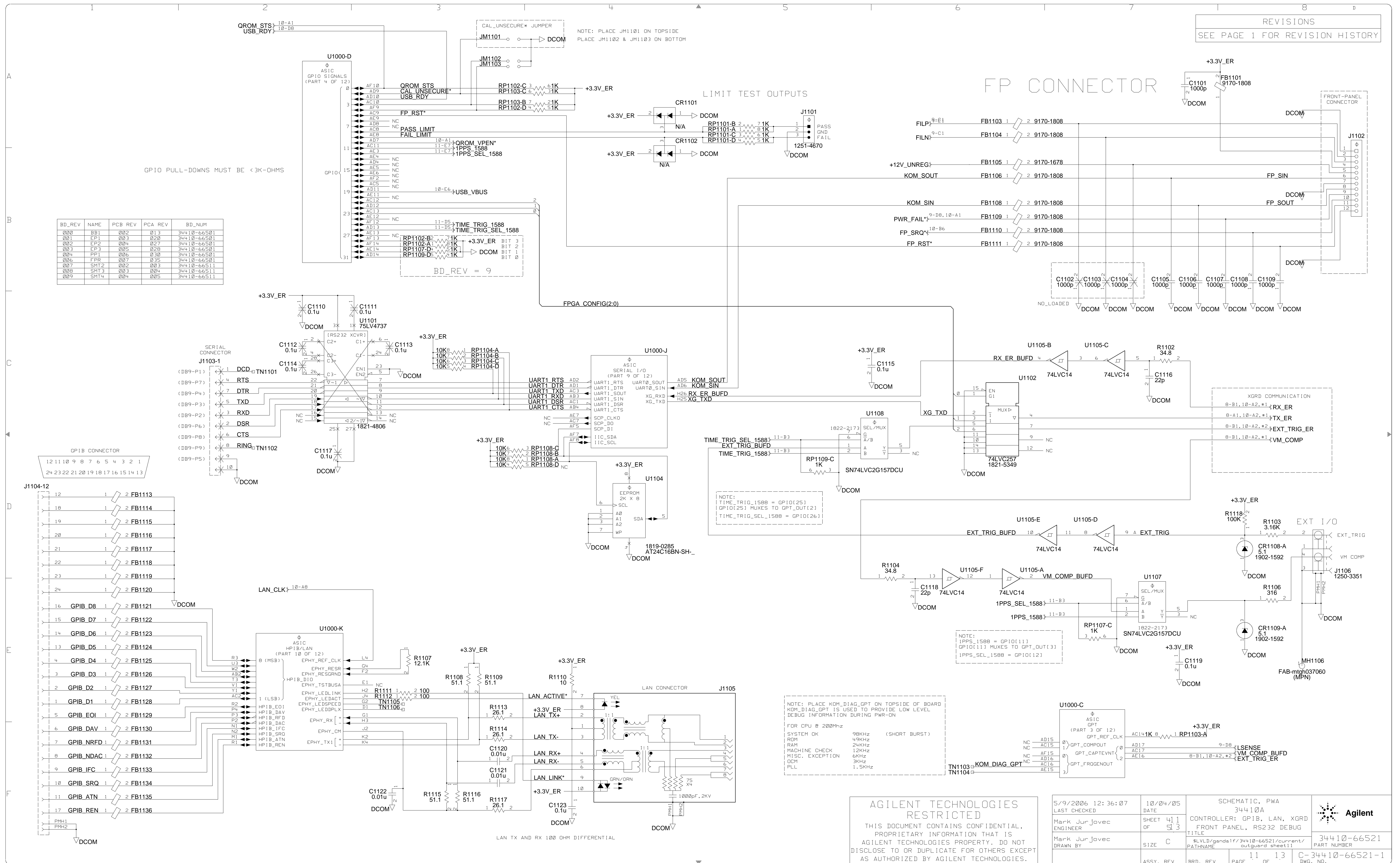
REV	INFORMATION	APPROVED	DATE
D			

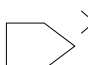


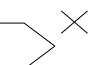
AGILENT TECHNOLOGIES
RESTRICTED

THIS DOCUMENT CONTAINS CONFIDENTIAL,
PROPRIETARY INFORMATION THAT IS
AGILENT TECHNOLOGIES PROPERTY. DO NOT
DISCLOSE TO OR DUPLICATE FOR OTHERS EXCEPT
AS AUTHORIZED BY AGILENT TECHNOLOGIES.

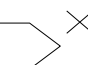
6/5/2006 14:45:15 LAST CHECKED	10/04/05 DATE	SCHEMATIC, PWA 34410A Gandalf TOP-LEVEL BLOCK DIAGRAM			 Agilent
Mark Jurjovec ENGINEER	SHEET 1 OF 1				
Mark Jurjovec DRAWN BY	SIZE A	TITLE \$LVLD/gandalf/34410-66521/current/top sheet1			34410-66521 PART NUMBER
	ASSY. REV	BRD. REV	PAGE 13 OF 13	A-34410-66521-1 DWG. NO.	




+18V 


VCC 


VCCA 

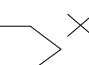
3.3A 

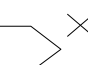
+3.3V_FPGA 

2.5V 

2.5A 

1.2V 

-18V 

AGND 

GND 