

130 (mm)

180 (mm)

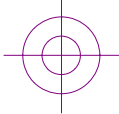
20 (mm)

100 (mm)



50 (mm)

130 (mm)

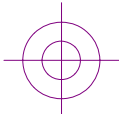


50 (mm)

180 (mm)

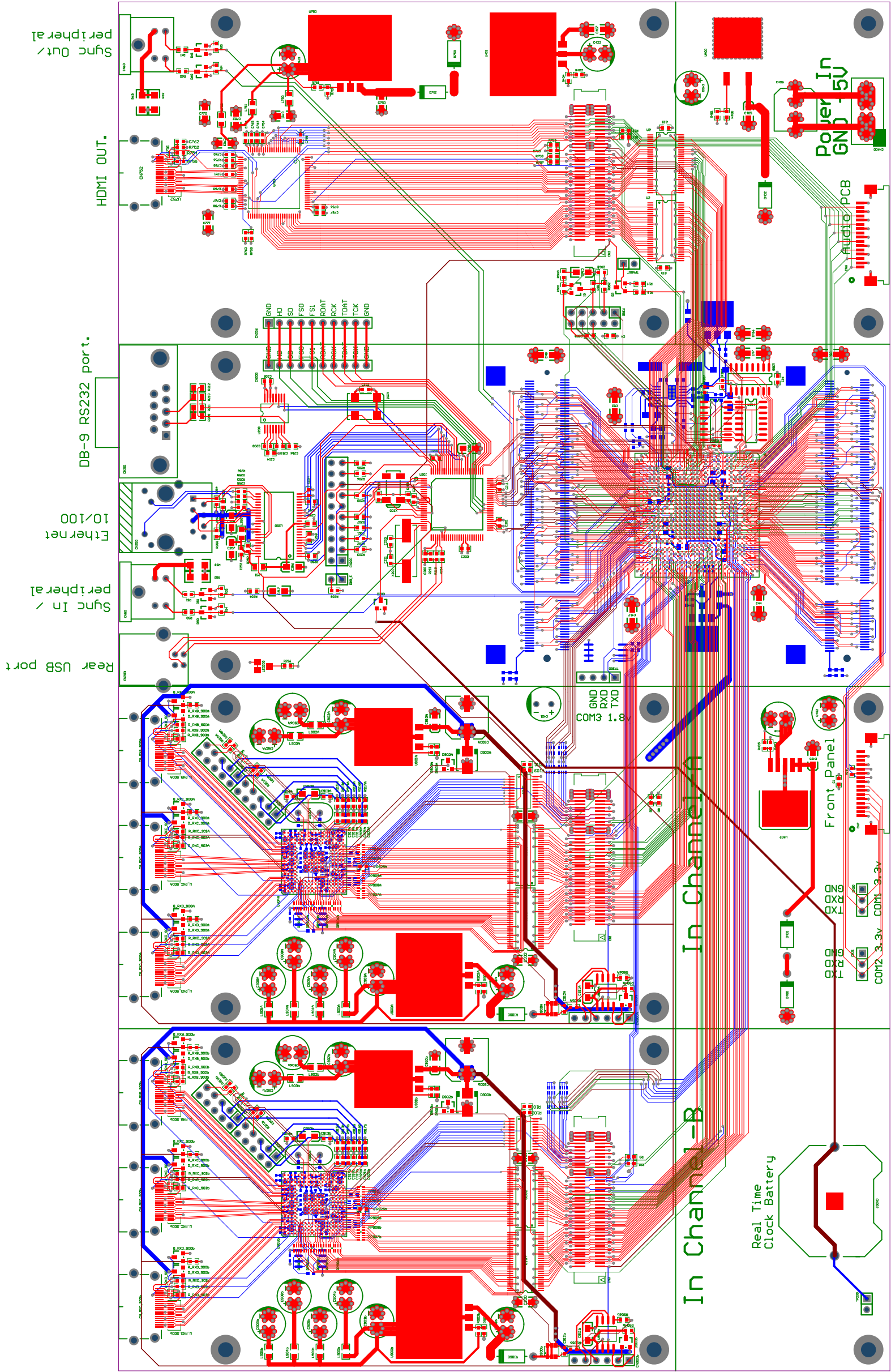
20 (mm)

100 (mm)



50 (mm)

130 (mm)



Rear USB port  
Sync In / peripheral  
Ethernet 10/100  
DB-9 RS232 port.  
HDMI OUT.  
Sync Out / peripheral

In Channel-B

In Channel-A

Real Time  
Clock Battery

Front Panel

Power In  
GND 5V

Audio PCB

320 (mm)

80 (mm)

80 (mm)

80 (mm)

21-Jan-2020  
18:22:52  
C:\work\k\dus\_EP3C55\_AF.ddb\Doc\Scalar\_FP6A\_HDMI\_OUT\_HDMI\_IN\_DEC-01\Scalar\_ep3c55.PCB  
Mechanical Layer 1  
This PCB has 8 layers. Each layer name starts with a L#. The number starts at 1 for the top of the PCB, thru 8 being the bottom.  
The layers which are power planes have a 'p-' after the layer 'L#'.  
Smallest vias have a .2mm drill hole, and, a .4mm outer diameter.  
These gerber files use 215 resolution.  
**This layer should have 2 oz copper.**