

# CYCLONE V GPU SCHEMATICS

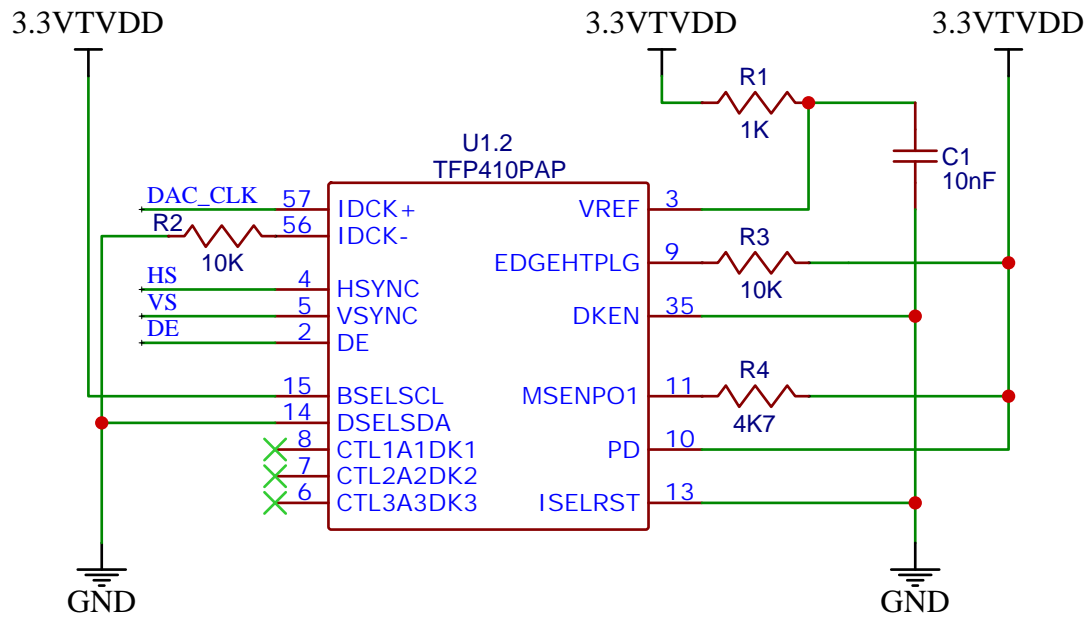
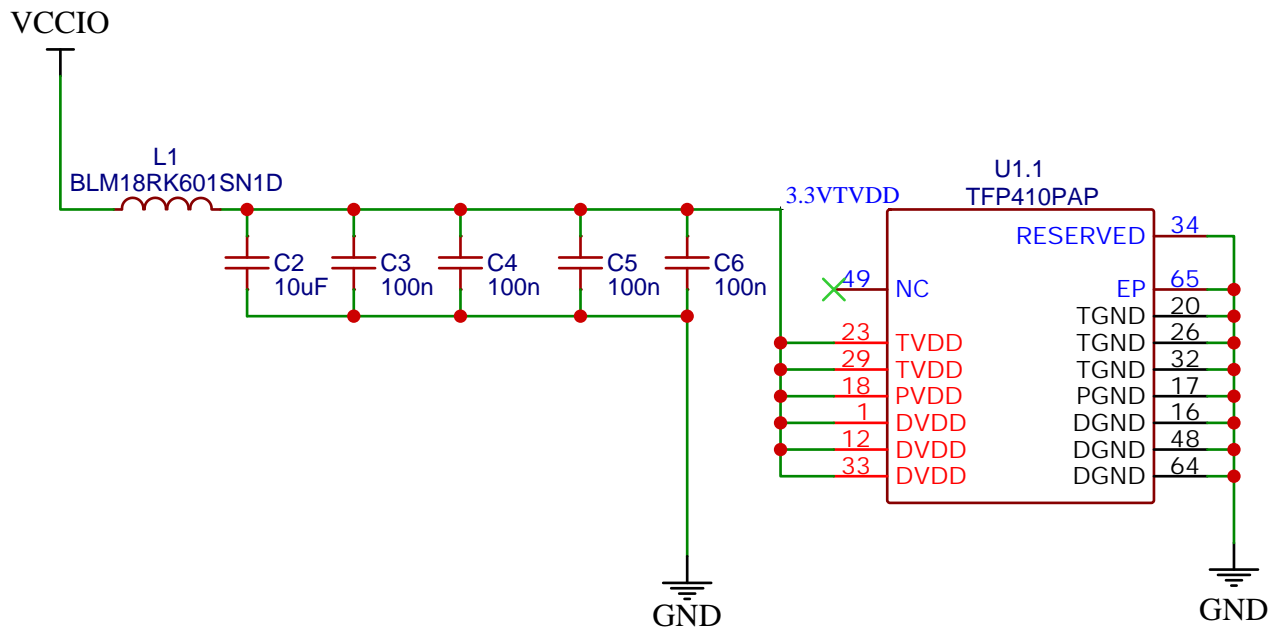
## REVISIONS

1.0 - Initial draft
1.1 - Replaced MAX5101 DAC with PCM5101A. Replaced wire-wound chokes with fixed inductors.
1.2 - Added decoupling and supply isolation for TFP410.
1.3 - Removed decoupling and supply isolation for TFP410. Added external memory.
1.4 - 10u caps and 100k pull-downs added to audio DAC output. Fixed micro-SD pullups. Corrected DDR-RAM clock pins. Variable-voltage added to U19.
1.5 - Trimpot orientation fixed. VCCA fixed to 3.3VA. Protection diodes added to PS2 port. Links added for AS x1/x4 config. VCCPGM replaced with VCCIO. TFP410 powered from VCCIO.

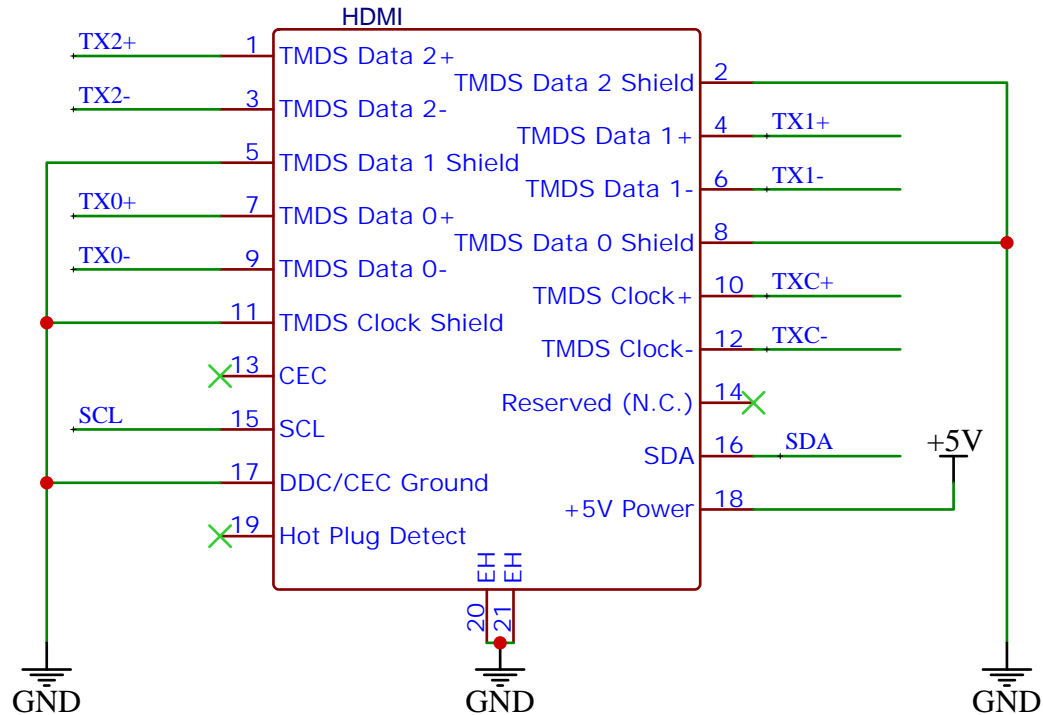
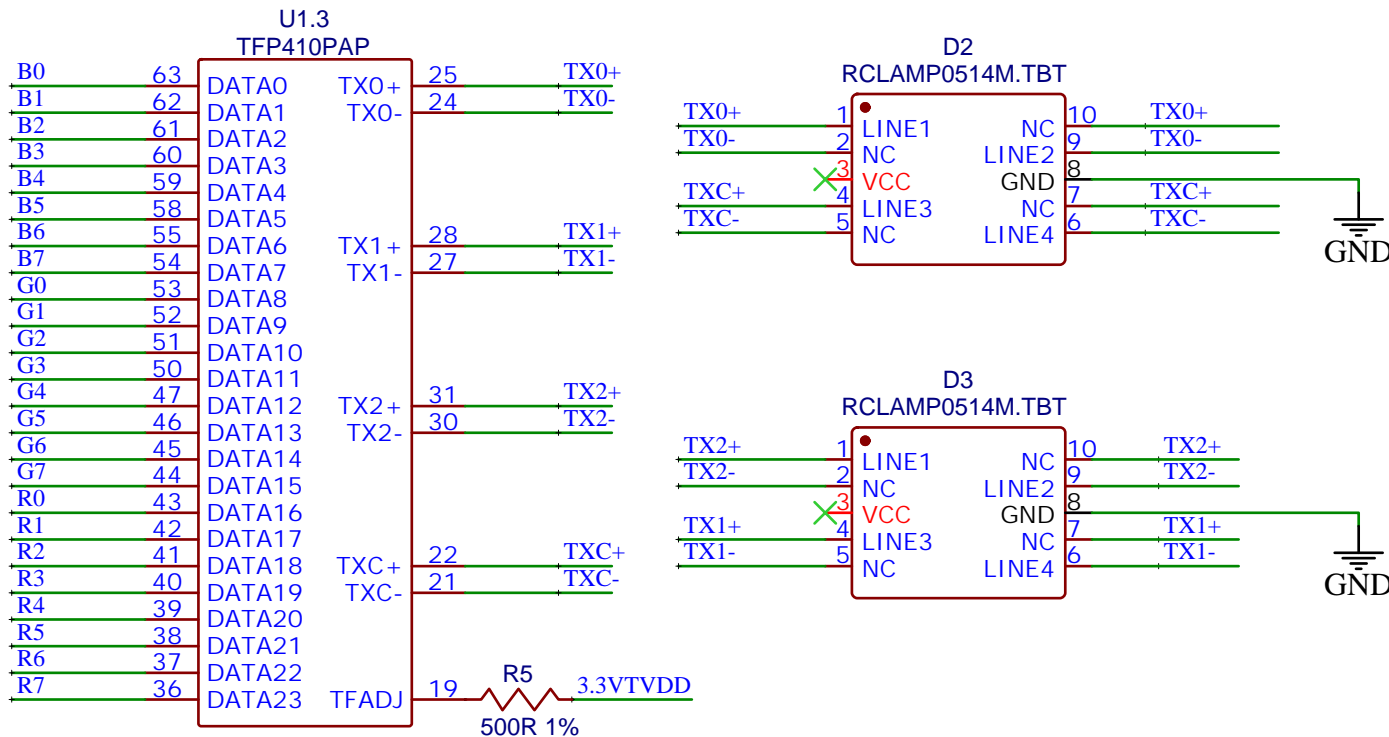
## PAGE      CONTENT

1.	INDEX
2.	DVI OUTPUT
3.	VGA OUTPUT
4.	5V TO 3.3V BUS CONVERSION
5.	CLOCK & FPGA CONFIGURATION
6.	FPGA CONNECTIONS
7.	GPU BOARD PERIPHERALS
8.	POWER SUPPLIES
9.	DECOUPLING
10.	FPGA EXTERNAL MEMORY

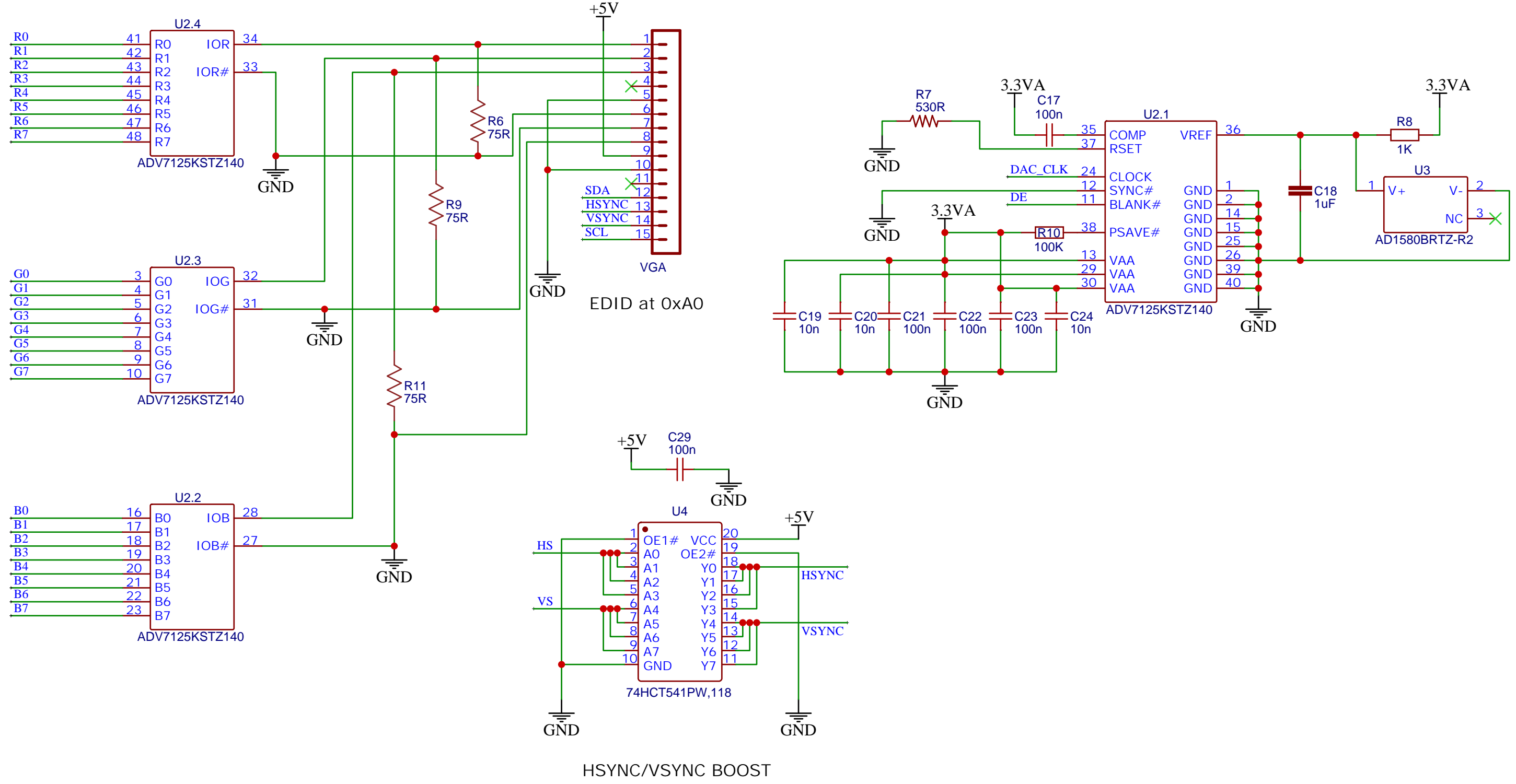
## 24-bit DVI VIDEO OUTPUT



Width	Latch Mode	Edge	Clock Mode
24-bit	Single-edge	Rising	Single-ended

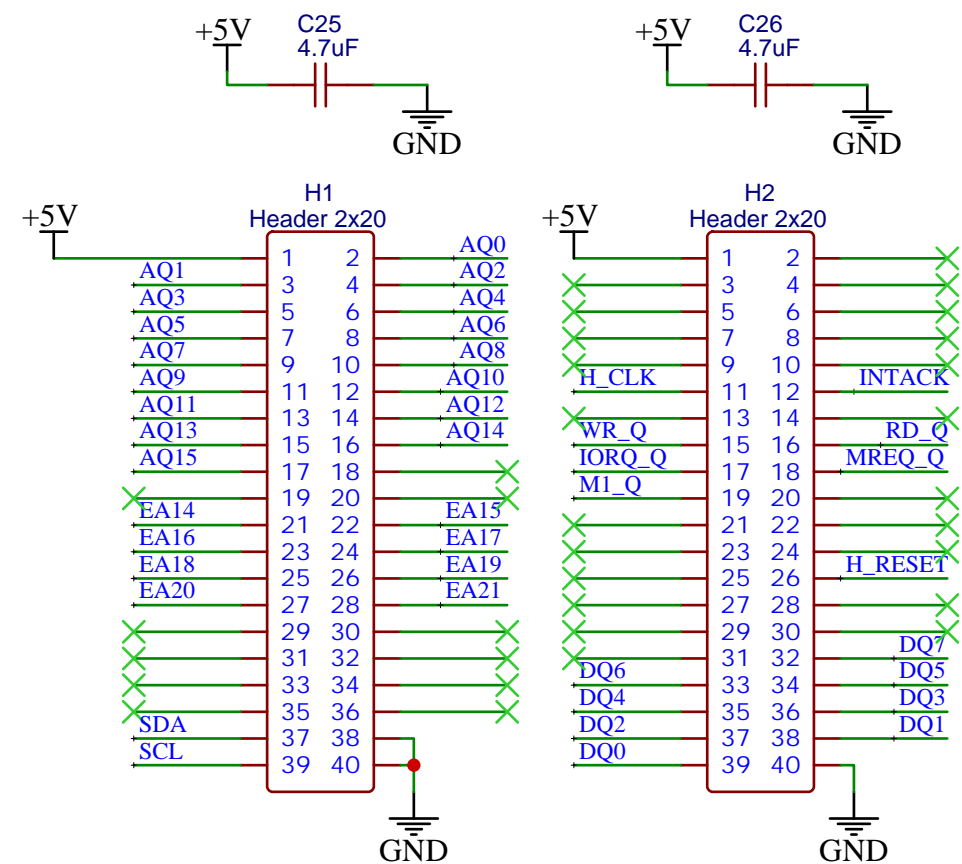
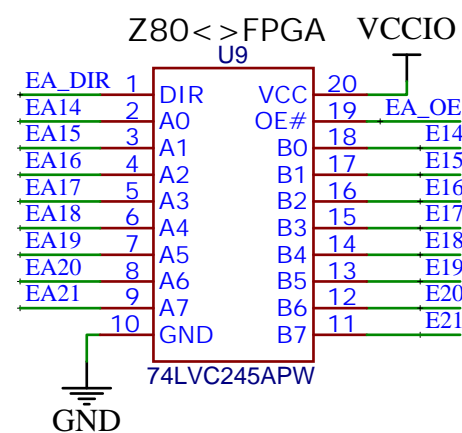
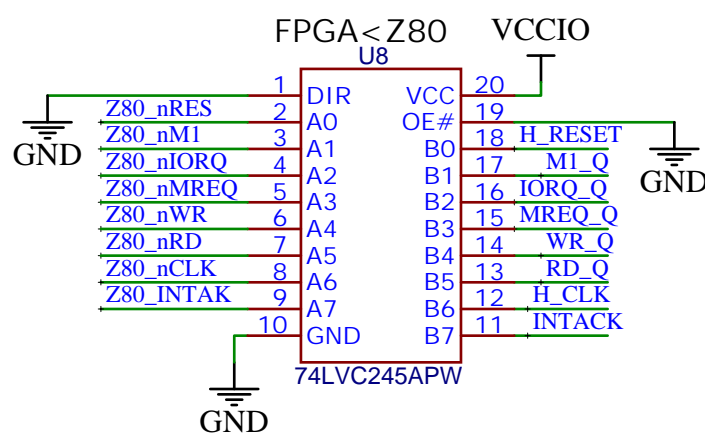
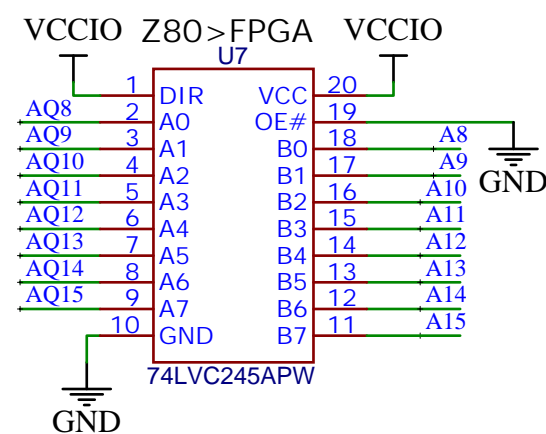
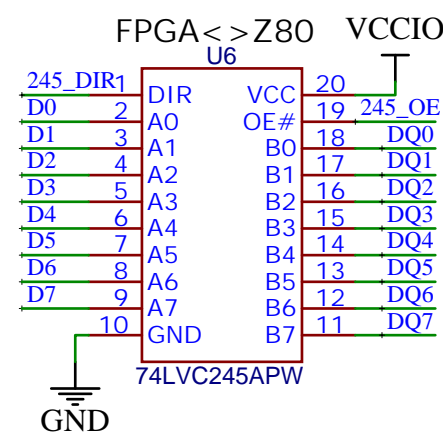
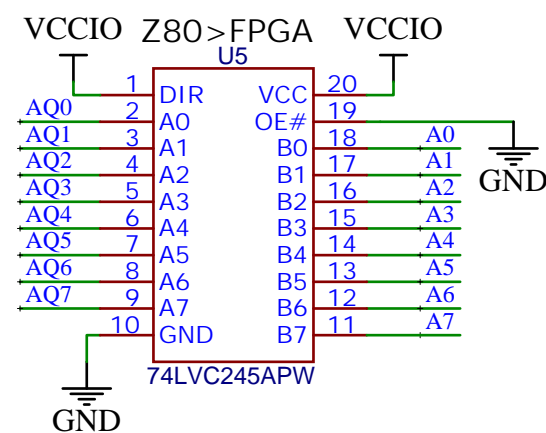


# 24-bit VGA VIDEO OUTPUT

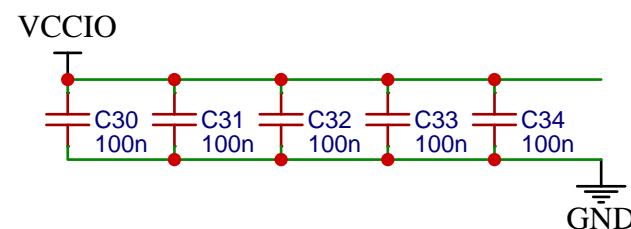


TITLE: Cyclone V GPU		REV: 1.0
EasyEDA	Company: 10103	Sheet: 1/1
	Date: 2020-08-23	Drawn By: nockieboy

# 5V<->3.3V SYSTEM BUS CONVERTERS

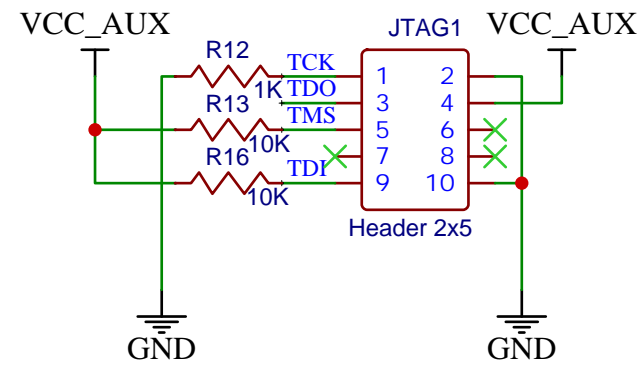


SYSTEM BUS HEADERS

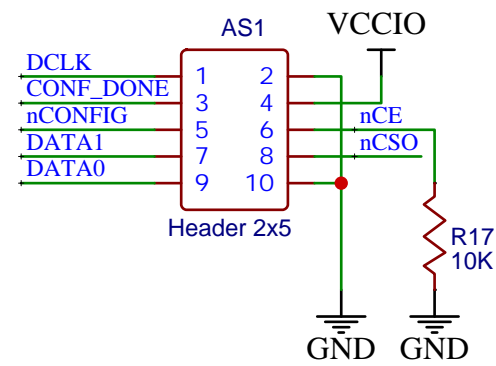


TITLE: Cyclone V GPU		REV: 1.0
EasyEDA	Company: 10103	Sheet: 1/1
	Date: 2020-06-25	Drawn By: nockieboy

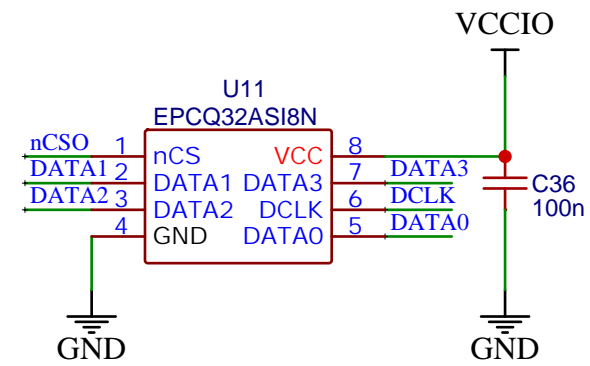
# CLOCK & FPGA CONFIGURATION



JTAG HEADER

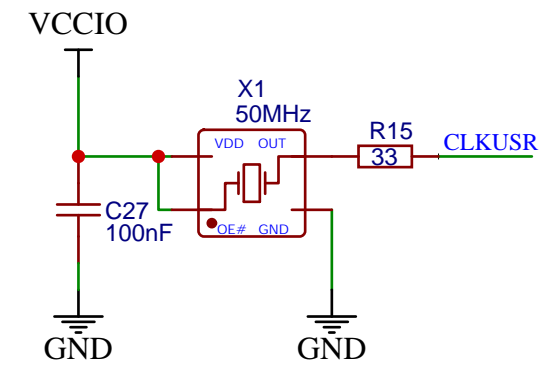


AS HEADER

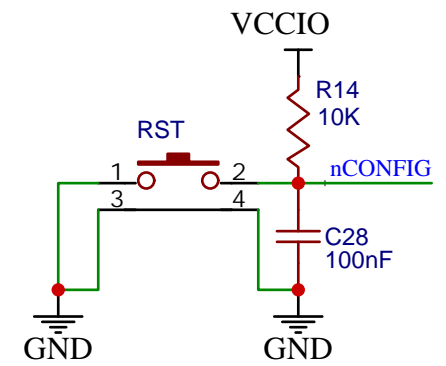


CONFIG EEPROM

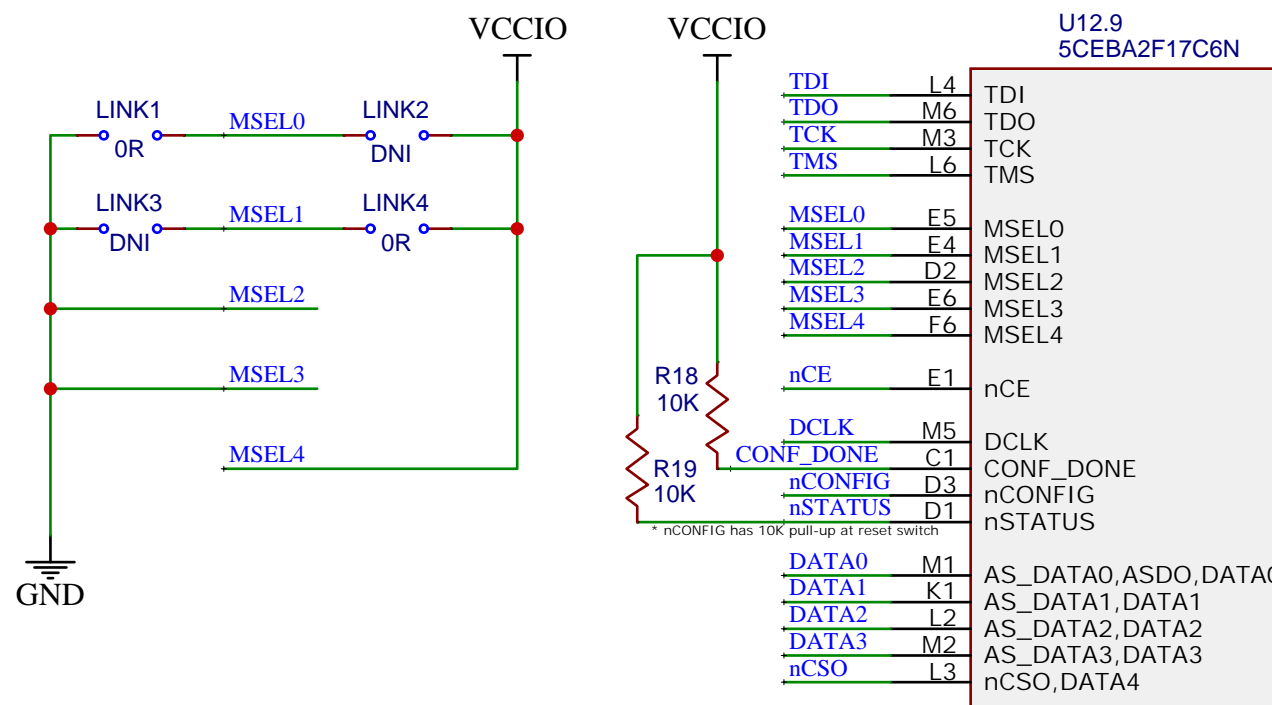
\* Minimum 32Mbit EEPROM required for 21Mbit image



50 MHz CLOCK



FPGA RESET

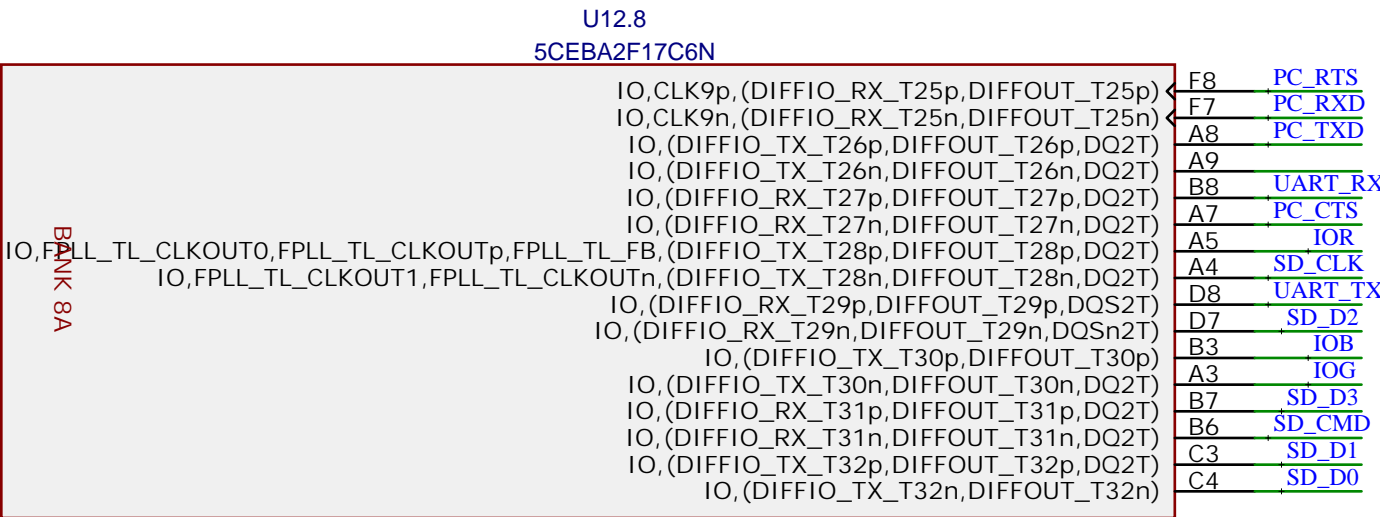
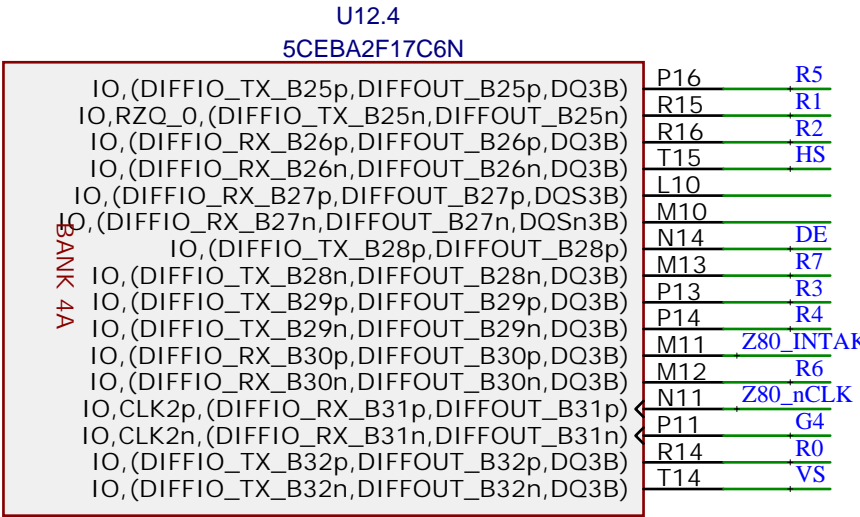
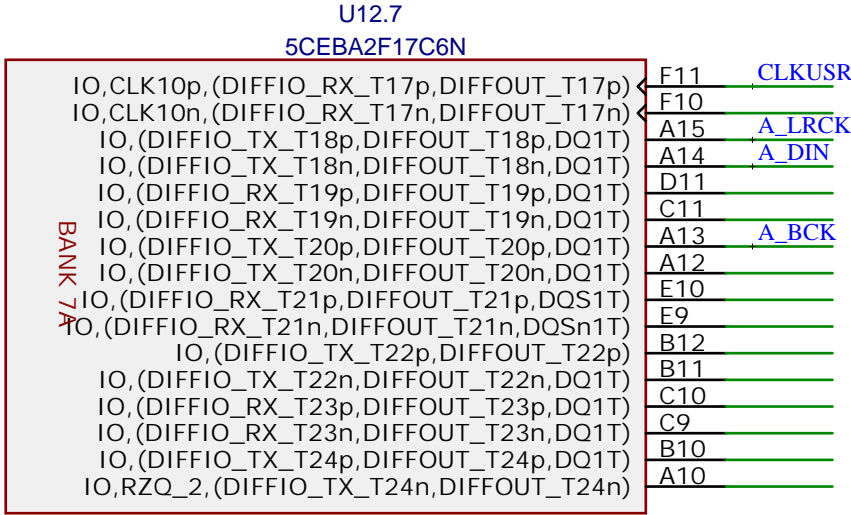
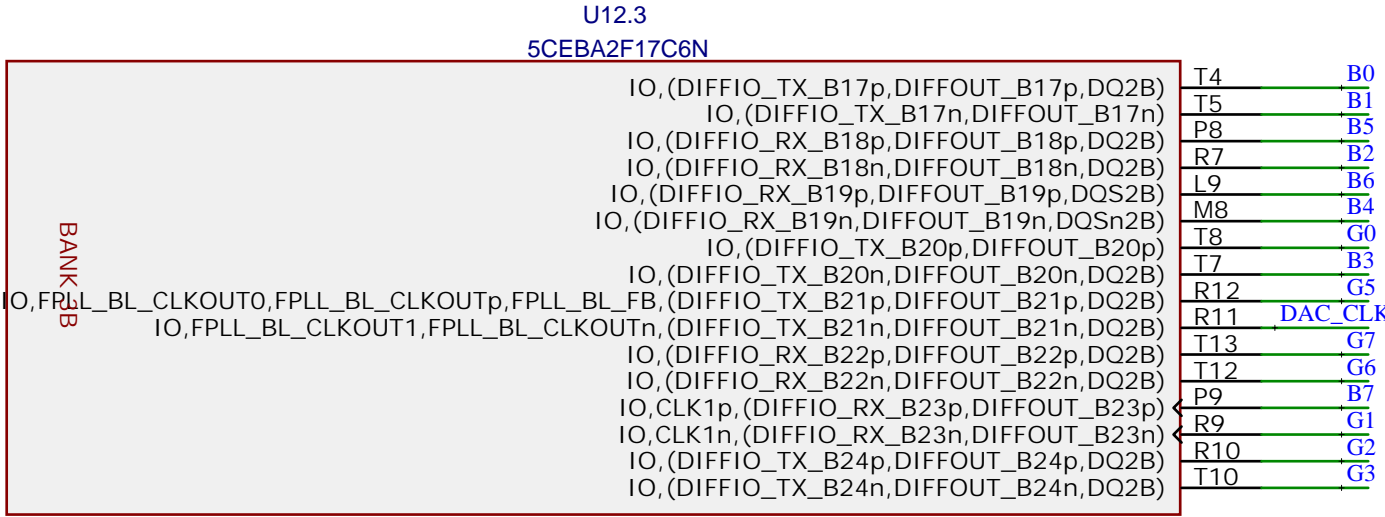
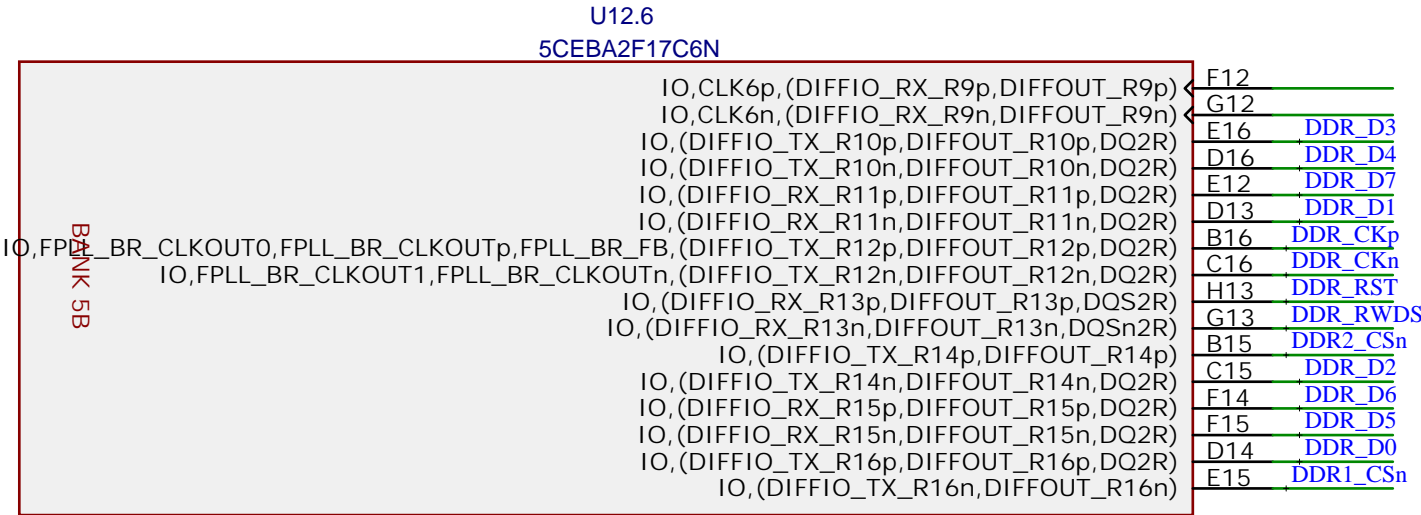
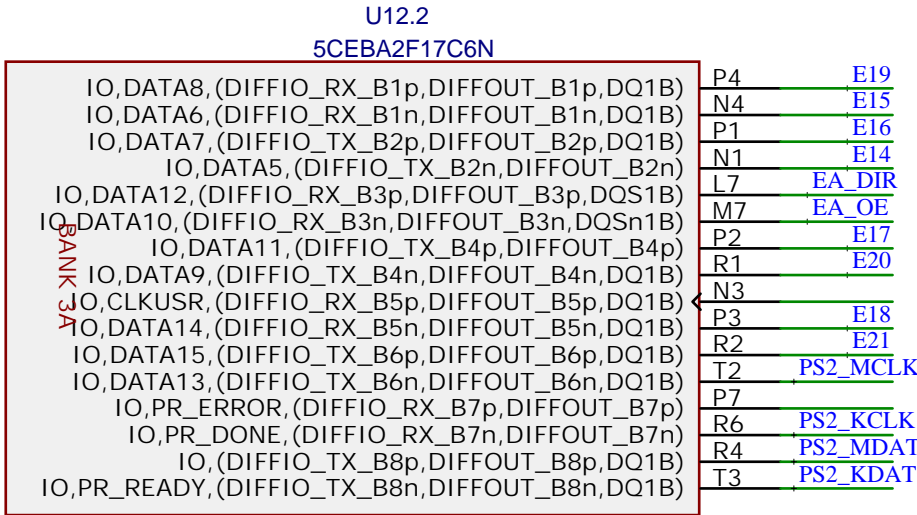
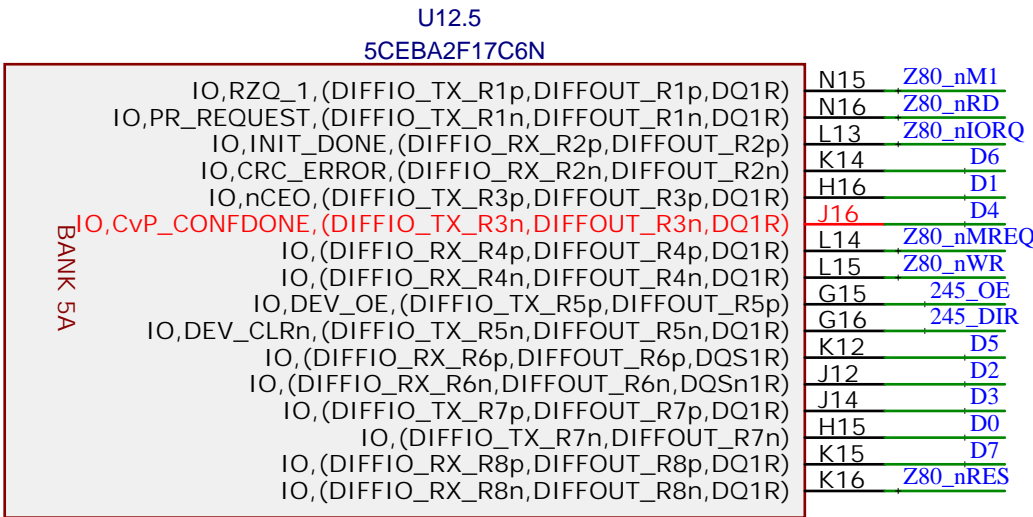
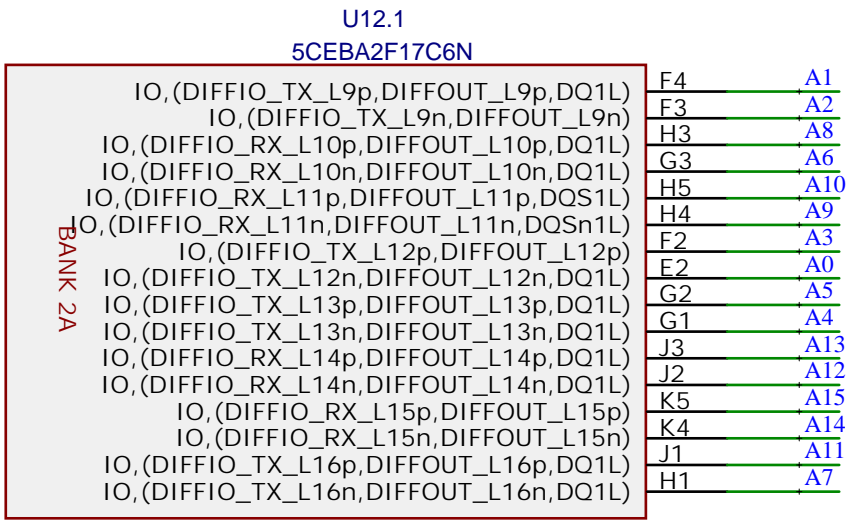
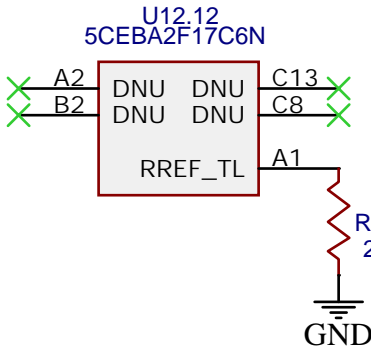


AS FAST (x4) 10010 configuration @ 3.3V with J2 pins 1-2 connected.  
AS STANDARD (x1) 10011 configuration @ 3.3V with J2 pins 2-3 connected.

\*MSEL Pin Settings\* 7-2 in Cyclone V Device Handbook Volume 1: Device Interfaces and Integration

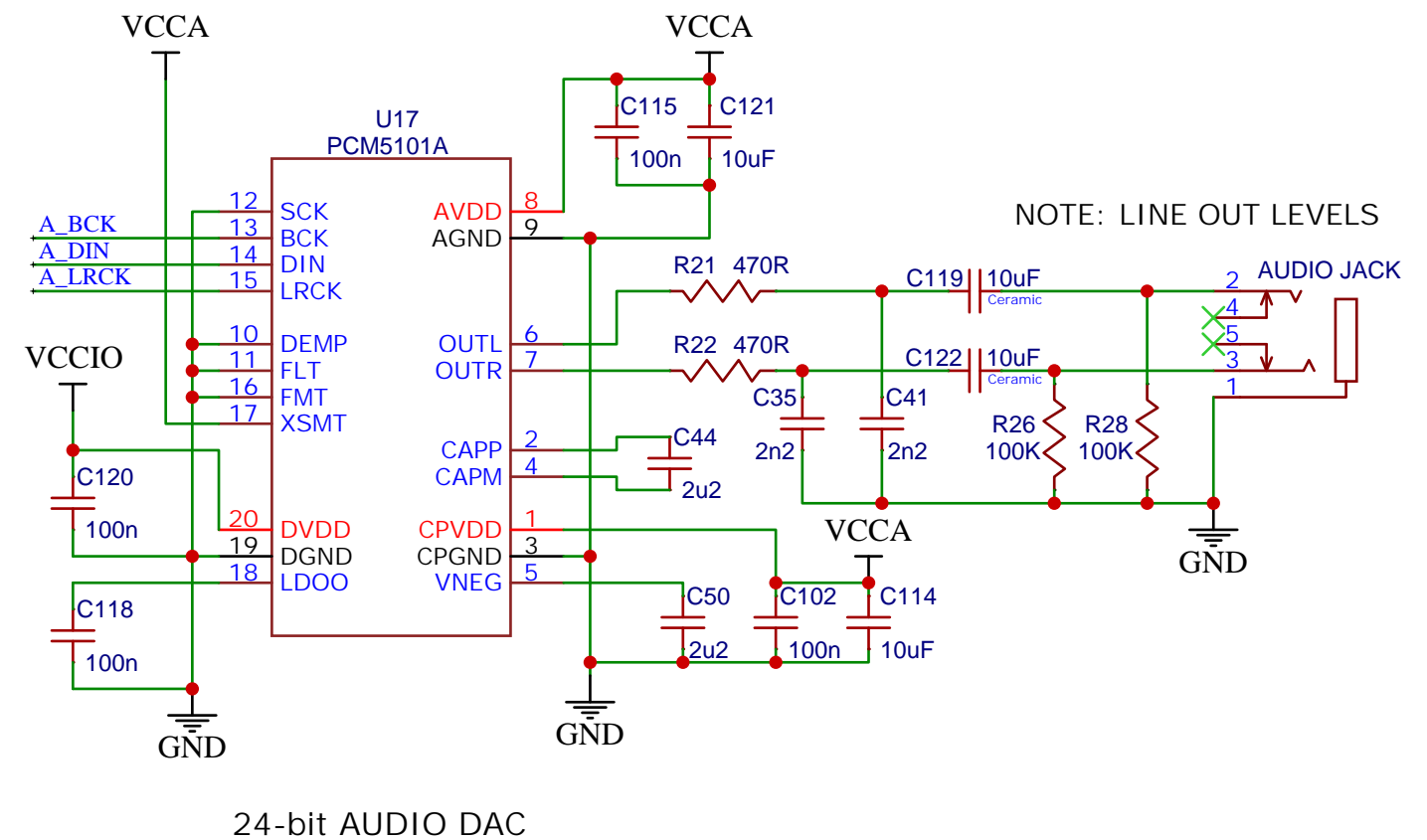
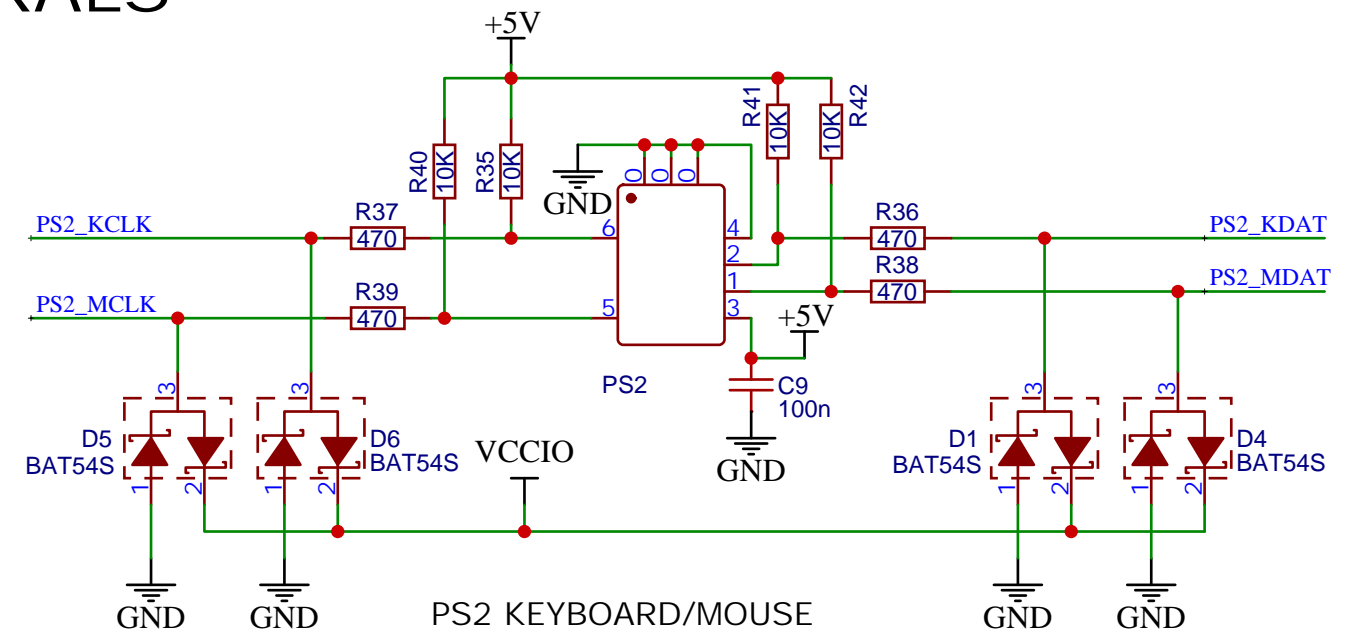
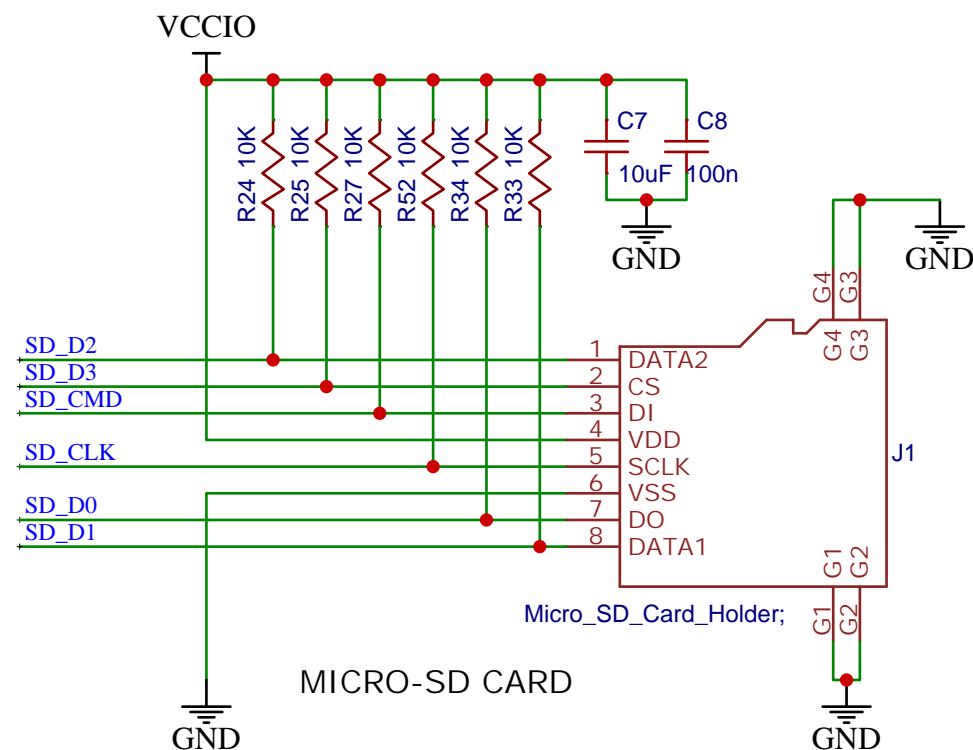
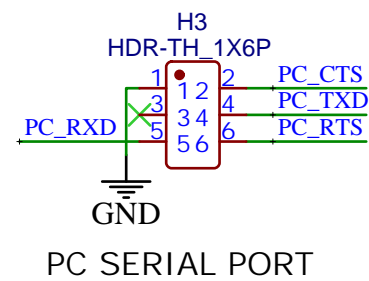
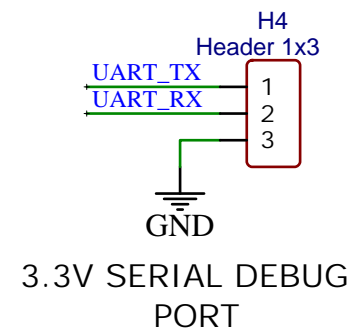
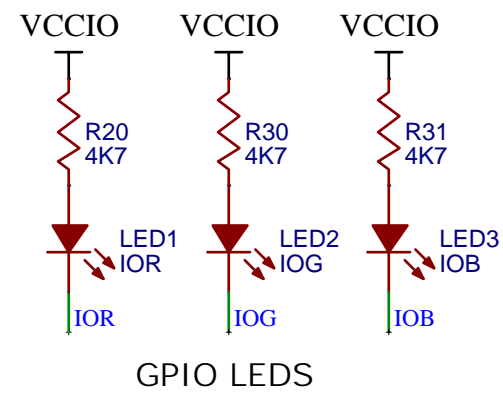
# Cyclone V FPGA

NOTE: Cyclone V A2 and A4 versions are pin-compatible and interchangeable on this PCB design.



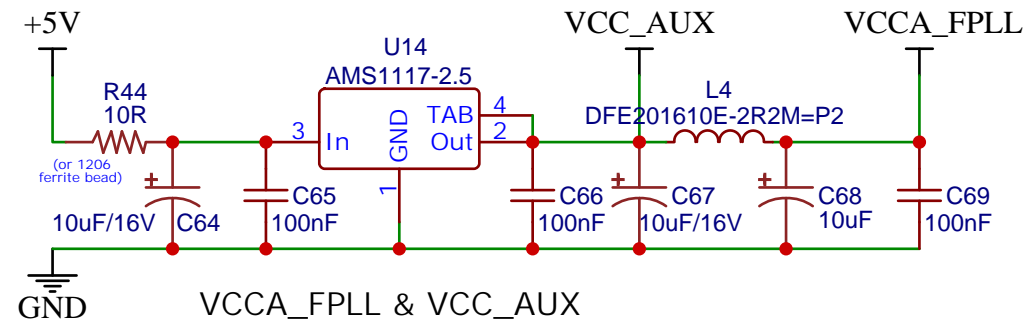
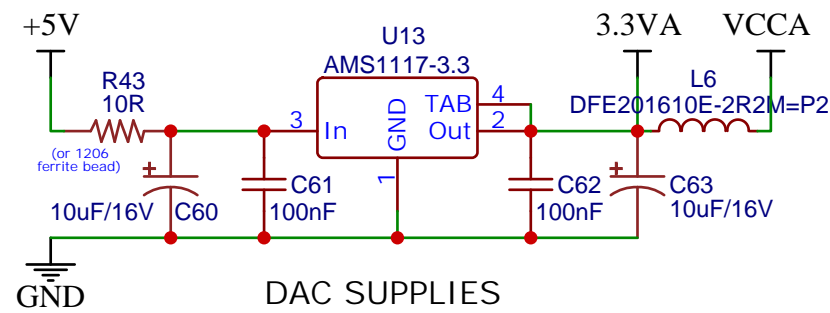


# PERIPHERALS

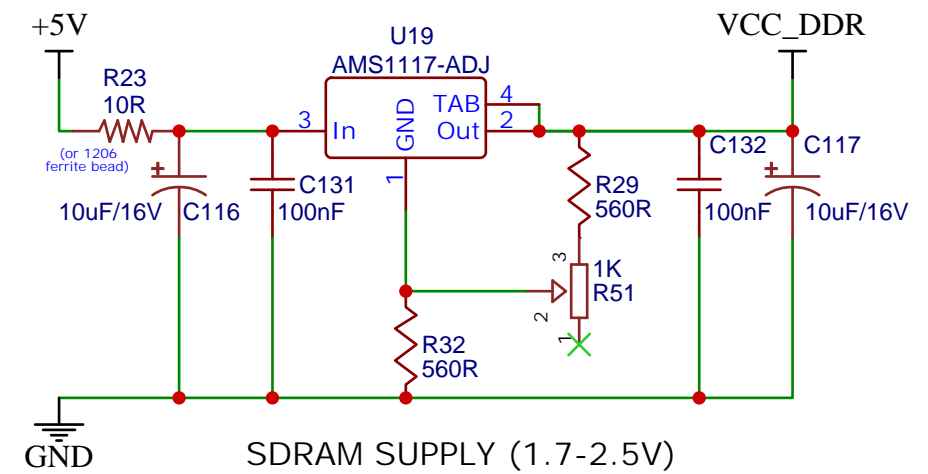
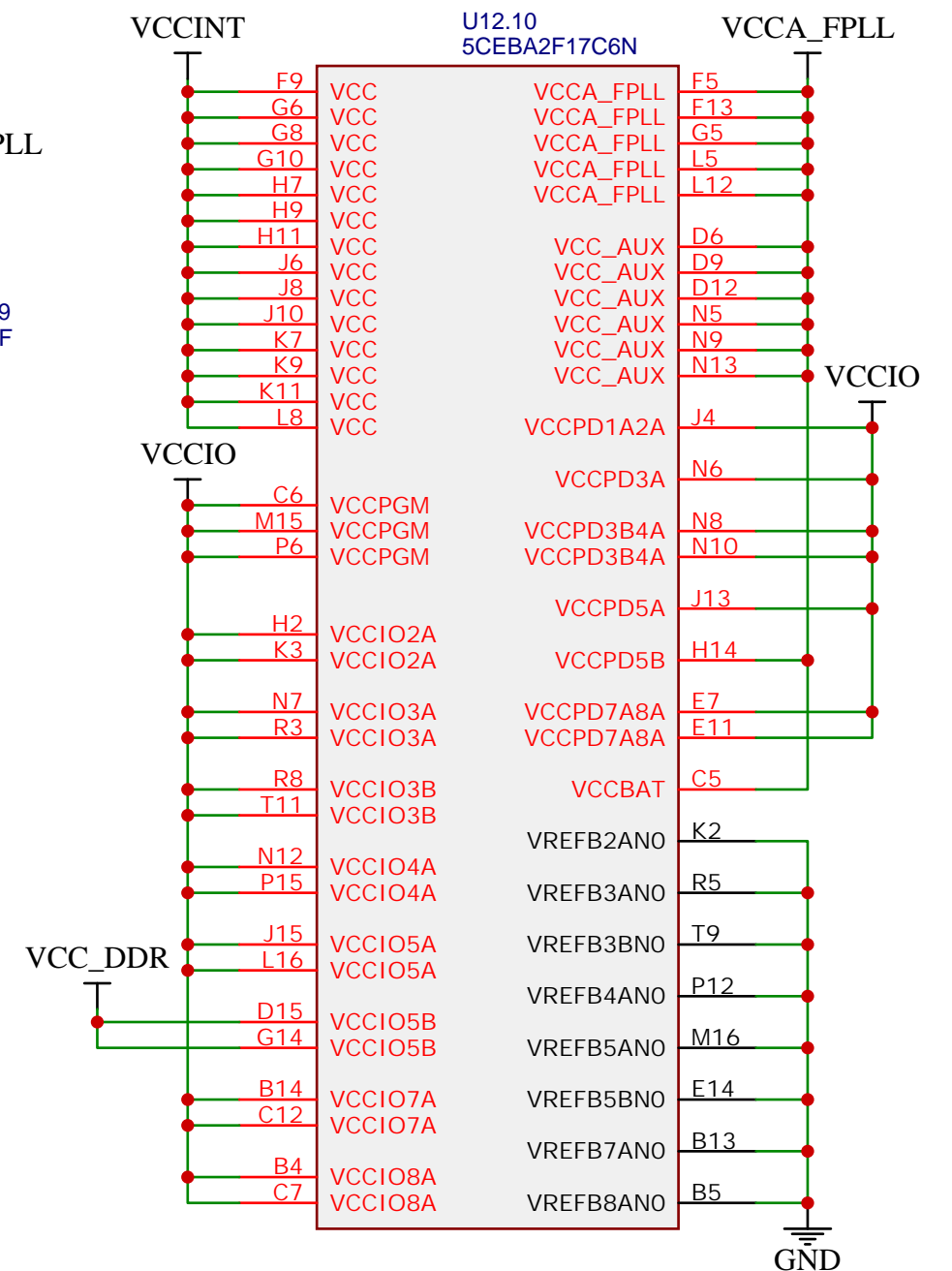
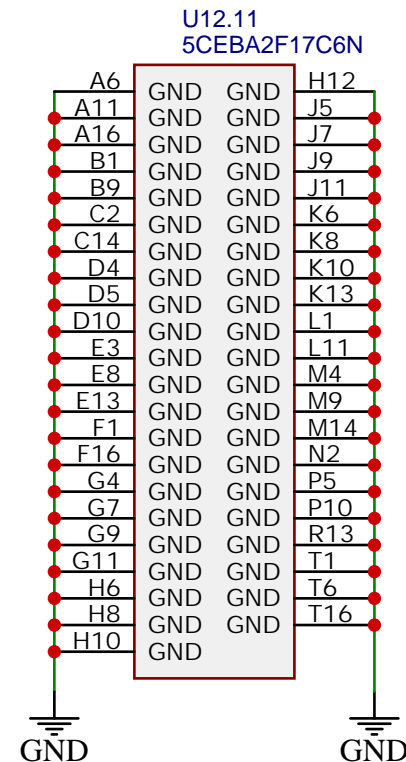
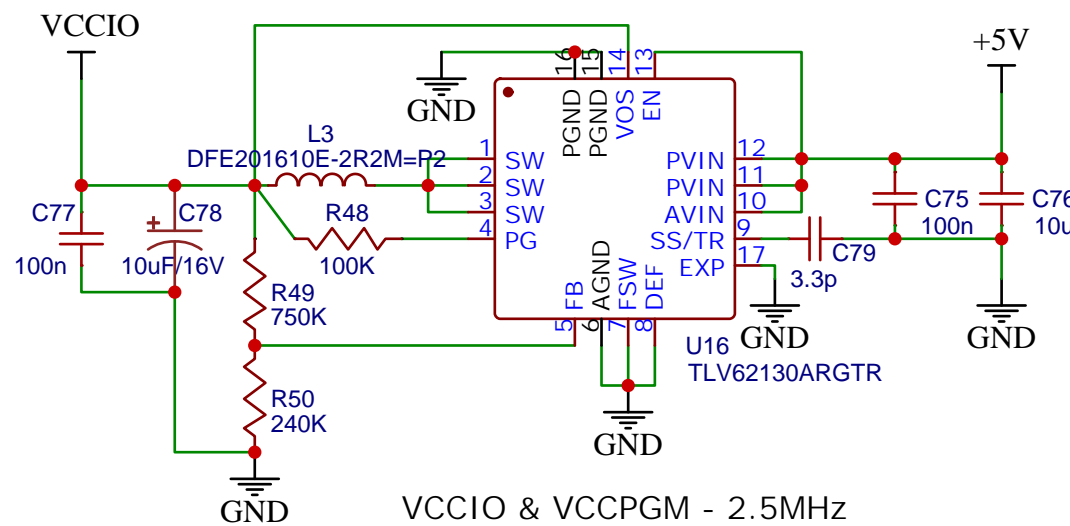
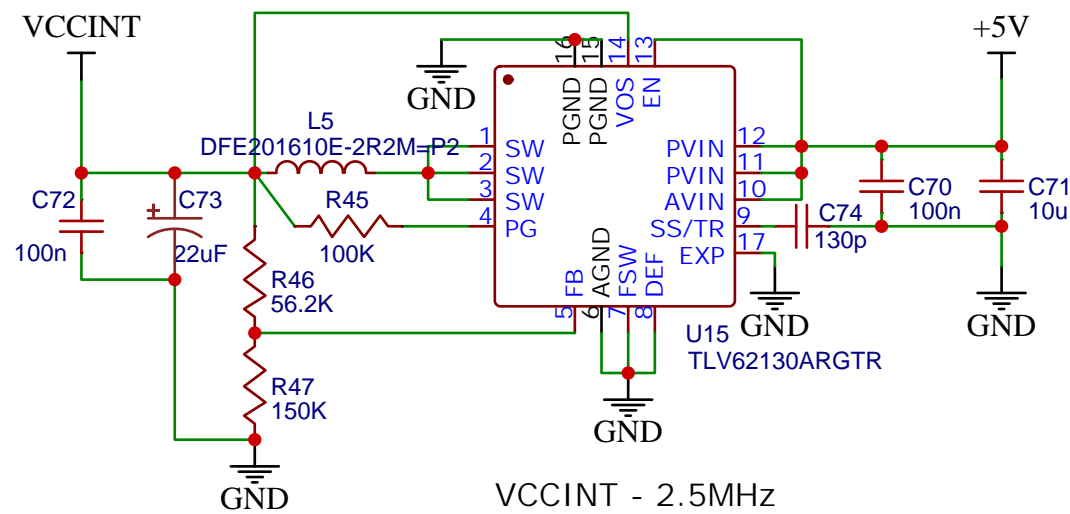


TITLE: Cyclone V GPU		REV: 1.5
EasyEDA	Company: 10103	Sheet: 1/1
	Date: 2020-08-23	Drawn By: nockieboy

# POWER SUPPLIES



DESIGN NOTE: All 10uF/22uF components are SMD 3216 tantalum caps.



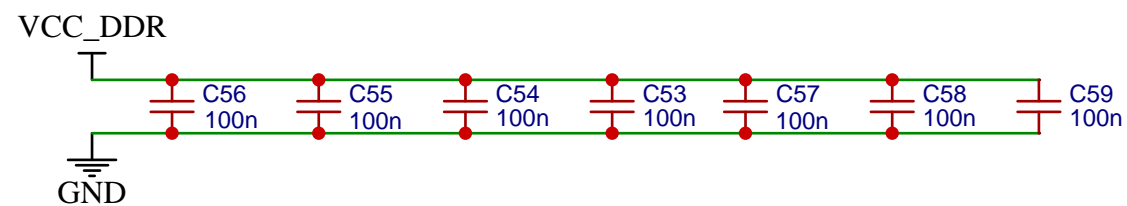
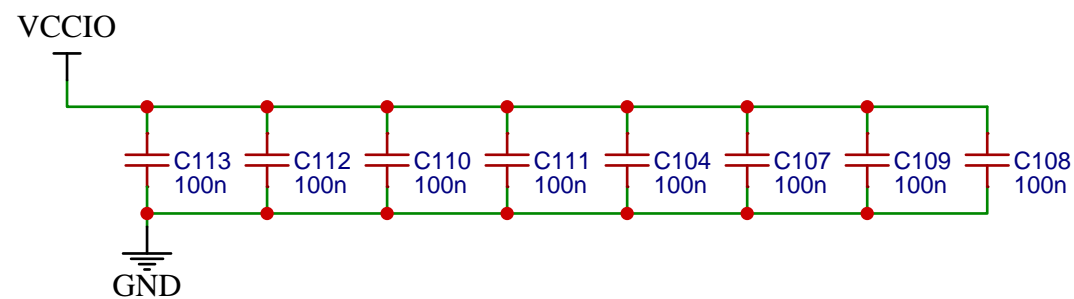
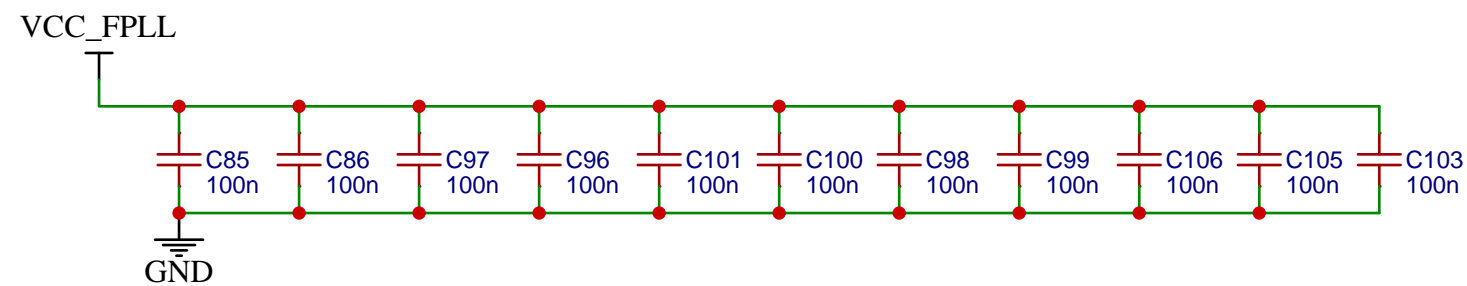
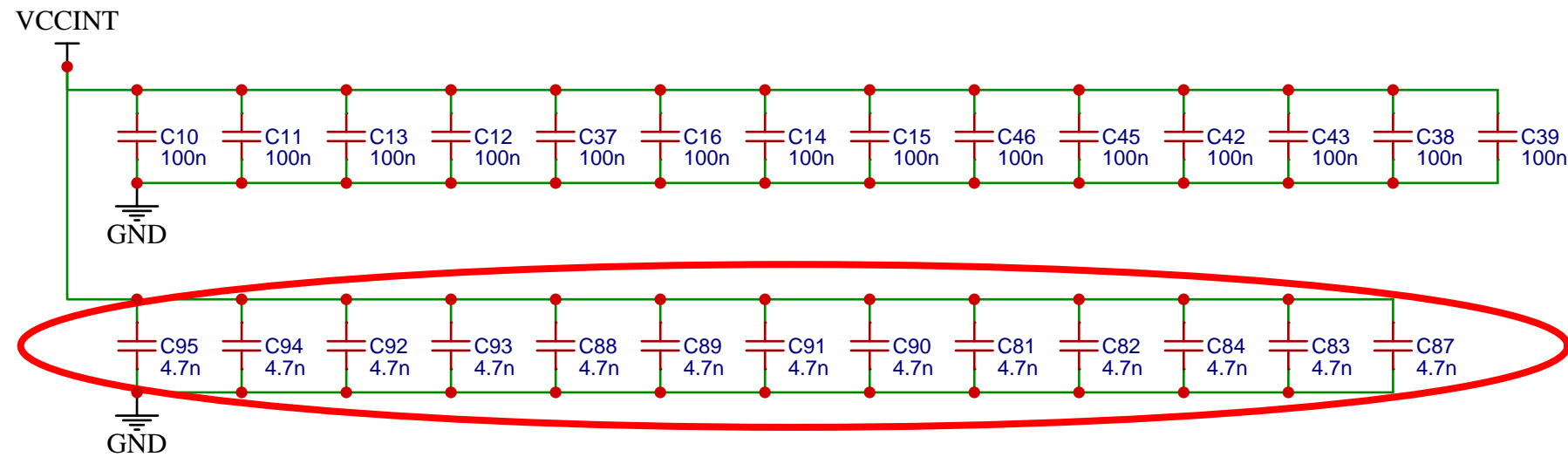
Supplies: U13 - 3.3V supply ( 3.3VA, VCCA )  
 U14 - 2.5V supply ( VCCA\_FPLL, VCC\_AUX )  
 U15 - 1.1V supply ( VCCINT )  
 U16 - 3.3V supply ( VCCIO )  
 U19 - 1.8-2.5V supply ( VCC\_DDR )

TITLE: Cyclone V GPU		REV: 1.5
EasyEDA	Company: 10103	Sheet: 1/1
	Date: 2020-10-03	Drawn By: nockieboy



# FPGA DECOUPLING

Note: Place capacitors near FPGA pins



TITLE:

Cyclone V GPU

REV: 1.0



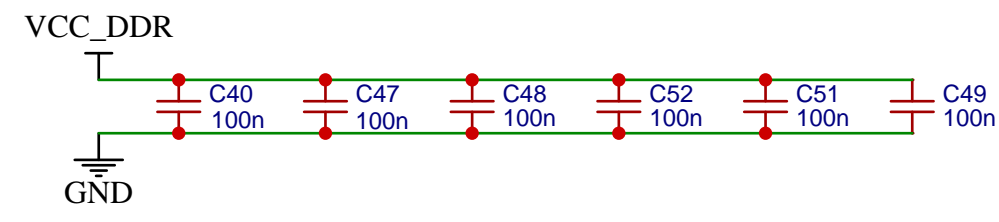
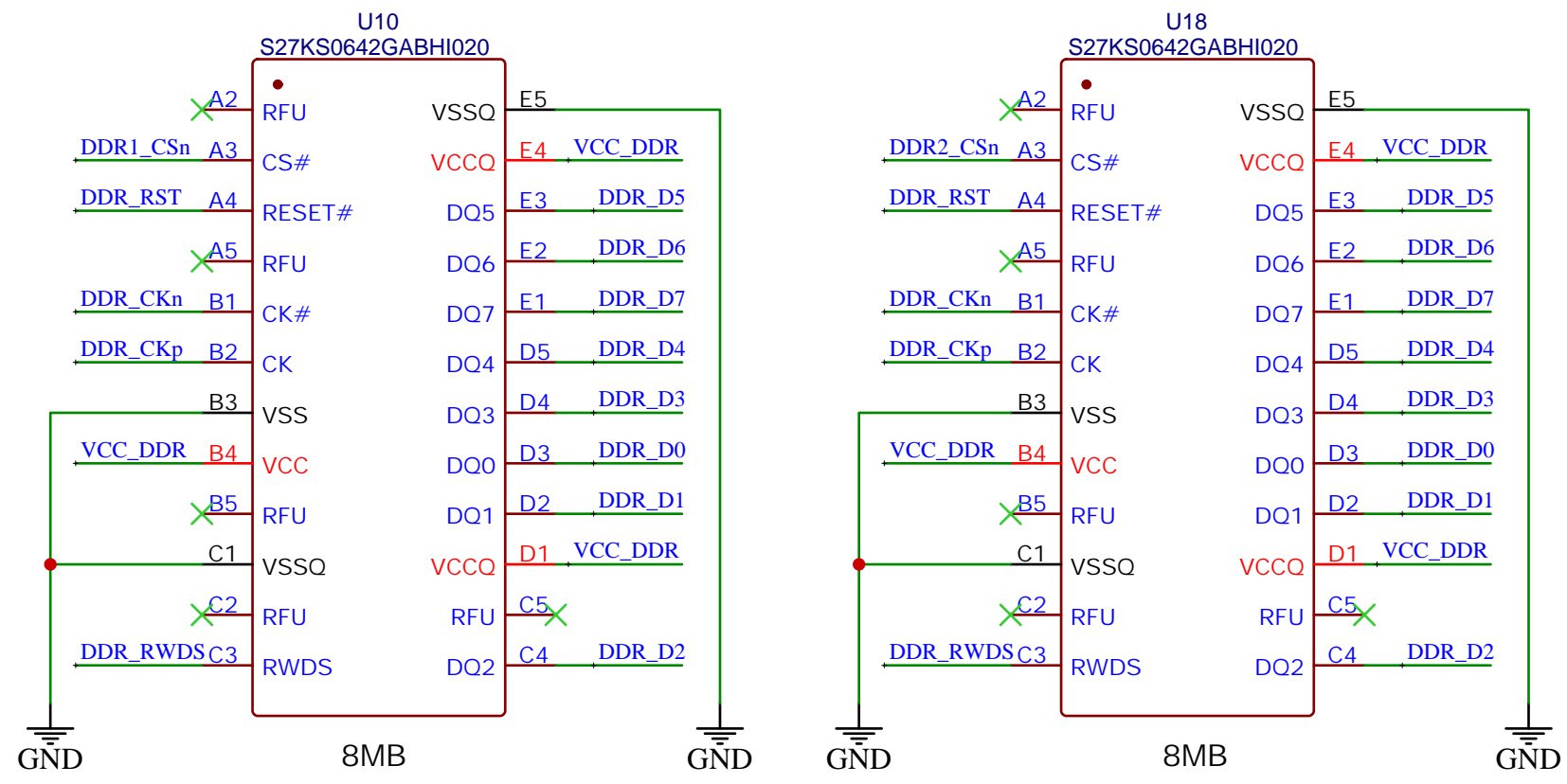
Company: 10103

Sheet: 1/1

Date: 2020-10-20

Drawn By: nockieboy

FPGA EXTERNAL MEMORY



TITLE: Cyclone V GPU		REV: 1.3
EasyEDA	Company: 10103	Sheet: 1/1
	Date: 2020-10-27 Drawn By: nockieboy	