

THERMAL EXPERT™

Mobile Infrared Camera QVGA _ 384 x 288, 17 μ m pitch



6.8 mm lens (default)



13 mm lens (option)



Description

• High performance

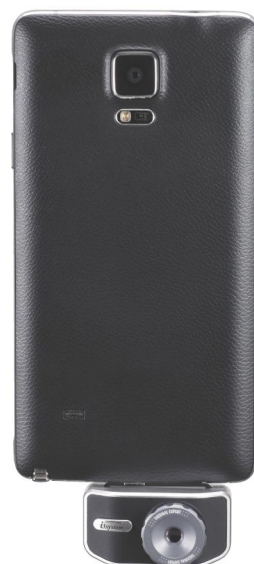
- High resolution : 384 x 288 (17 μ m pitch)
- High sensitivity : ~ 50 mK (f/1.0), ~ 80 mK (f/1.3)

Features

- Temperature measurement for whole pixels
- Convenient image view functions with infrared and visible
- Easy graphical user interface (digital zooming, color palette...)
- Interchangeable Lens

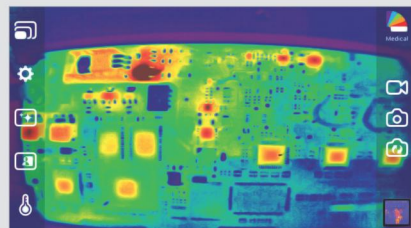
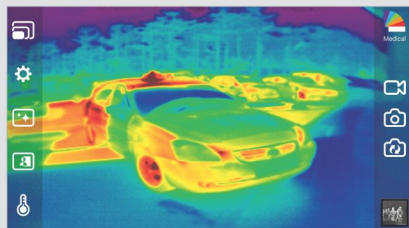
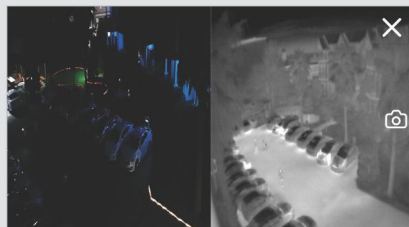
THERMAL EXPERT™ App

- Color palettes (12 color maps)
- Storage images (IR, visible with snapshot and video)
- Digital zooming (384 x 288, 320 x 240, 240 x 160, 160 x 120)
- Image view with visible (50:50, Twin , Overlay, Floating)
- Temperature Measurement
(Alarm, Min / Max, Point / Line / Rectangle / Circle profile)
- Report (Generate pdf report)



SEE THE NEW WORLD THROUGH i3system, Inc.

Image from the THERMAL EXPERT™



Technical Specification

Array format	384 x 288
Pixel pitch	17 μ m
Wavelength band	8 ~ 14 μ m (Longwave Infrared)
Sensitivity	0.05 $^{\circ}$ C @ f/1.0
	0.08 $^{\circ}$ C @ f/1.3
Frame rate	< 9 Hz
Scene range temperature	-10 $^{\circ}$ C ~ 150 $^{\circ}$ C
Operating temperature	-10 $^{\circ}$ C ~ 50 $^{\circ}$ C
Power consumption	~ 500 mW
Weight	< 27 g (with Lens1)
Dimension (W x H x D)	47 mm x 25 mm x 16 mm (Without Lens)
Interface	USB OTG, Micro USB
Platform	Android
Type of lens	Wide FOV (default) : 6.8 mm / f/1.3
	Narrow FOV (option) : 13 mm / f/1.0
FOV[$^{\circ}$]	Wide FOV (default) : 56.3 $^{\circ}$ (H) x 41.8 $^{\circ}$ (V) - 71.4 $^{\circ}$ (diagonal)
	Narrow FOV (option) : 28.7 $^{\circ}$ (H) x 21.7 $^{\circ}$ (V) - 35.3 $^{\circ}$ (diagonal)
Focus range	Wide FOV : 0.2 m to infinity with 0.19 mm refocus
	Narrow FOV : 0.4 m to infinity with 0.39 mm refocus

Technical Dimension



Range Performance

