





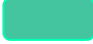








Keysight EDU34450A IC Identification
Last updated 3/24/2021 @ 11:54 PM PST

Design Wins

Purpose	Manufacturer	Part Number
Display Microcontroller	STMicroelectronics	STM32H750XBH6
ROM	Micron	MT48LC16M16A2
Serial Flash Memory	Micron	MT25QL128ABA1EW9-oSIT
	ISSI	IS25LP080D
Serial EEPROM Memory	Microchip	AT24CM01
	Microchip	AT24C256C
Ethernet Transceiver	Microchip	LAN8710A
Real Time Clock	Texas Instruments	BQ32002D
Display Power Management	Texas Instruments	TPS65150PWP
Front End Microcontroller	STMicroelectronics	STM32F401VDT6
Multimeter Chipset	Keysight	1NJ5-0001
Voltage Reference	Renesas	ISL21090

Component Function Guide

Color	Chip Use	Examples
	Audio	Amplifiers/CODECs/Microphones
	Camera/Image	Image Sensors/Video Processors
	Connectivity	Antennas/Bluetooth/GPS/USB/WiFi Stuff
	Display/Touchscreen	Touchscreen/Display Drivers
	Logic	PLDs/FPGAs/Logic Gates
	Memory	EEPROMs/NAND/RAM/SDRAM
	Mixed Signal	DSPs/MCUs
	Power	Battery Protection/Charge Controllers/PMICs/Voltage Regulators
	Processor	Application/Baseband Processors
	Radio Frequency	Radio Frequency/Envelope Tracking Stuff
	Sensor	Accelerometer/Pressure/Temperature
	Other	LED Controllers/Operational Amplifiers
	Unknown	Chips with no predictions of use

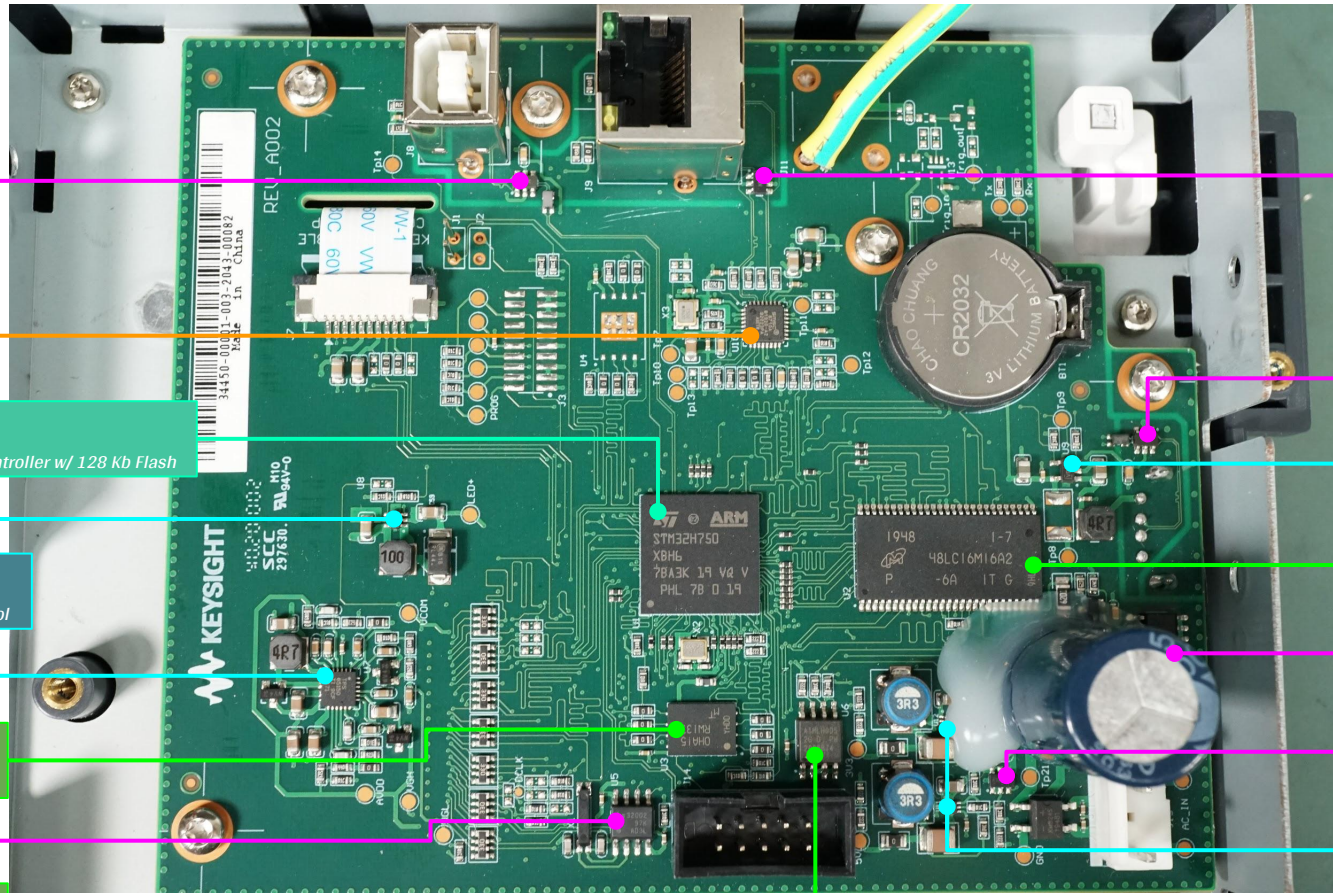
Main Board

Side 1 IC Identification

Picture Credit: EEVBlog

Function:

- Connectivity
- Memory
- Mixed Signal
- Power
- Other



29 - ON Semiconductor
#NUP2202W1
ESD Protection Diode

23 - Microchip
#LAN8710A
10/100 Ethernet Transceiver

18 - STMicroelectronics
#STM32H750XBH6
32-Bit ARM Cortex-M7 Microcontroller w/ 128 Kb Flash

25 - Texas Instruments
#TPS61169DCKR
38 V WLED Driver w/ PWM Control

24 - Texas Instruments
#TPS65150PWP
TFT Display Power Supply

20 - Micron
#MT25QL128ABA1EW9-OSIT
Serial Flash Memory - 128 Mb

22 - Texas Instruments
#BQ32002D
Real Time Clock

21 - Microchip
#AT24CM01
Serial EEPROM Memory - 1 Mb

30 - ON Semiconductor
#NUP4114HMR6T1G
ESD Protection Diode

29 - ON Semiconductor
#NUP2202W1
ESD Protection Diode

28 - Texas Instruments
#TPS2051CDBV
Power-Distribution Switch

19 - Micron
#MT48LC16M16A2
SDR SDRAM Memory - 256 Mb

26 - Texas Instruments
#LM393D
Dual Differential Comparator

31 - ON Semiconductor
#Unknown
ESD Protection Diode

27 - Texas Instruments
#TPS563231DRL
3 A Step-Down Regulator

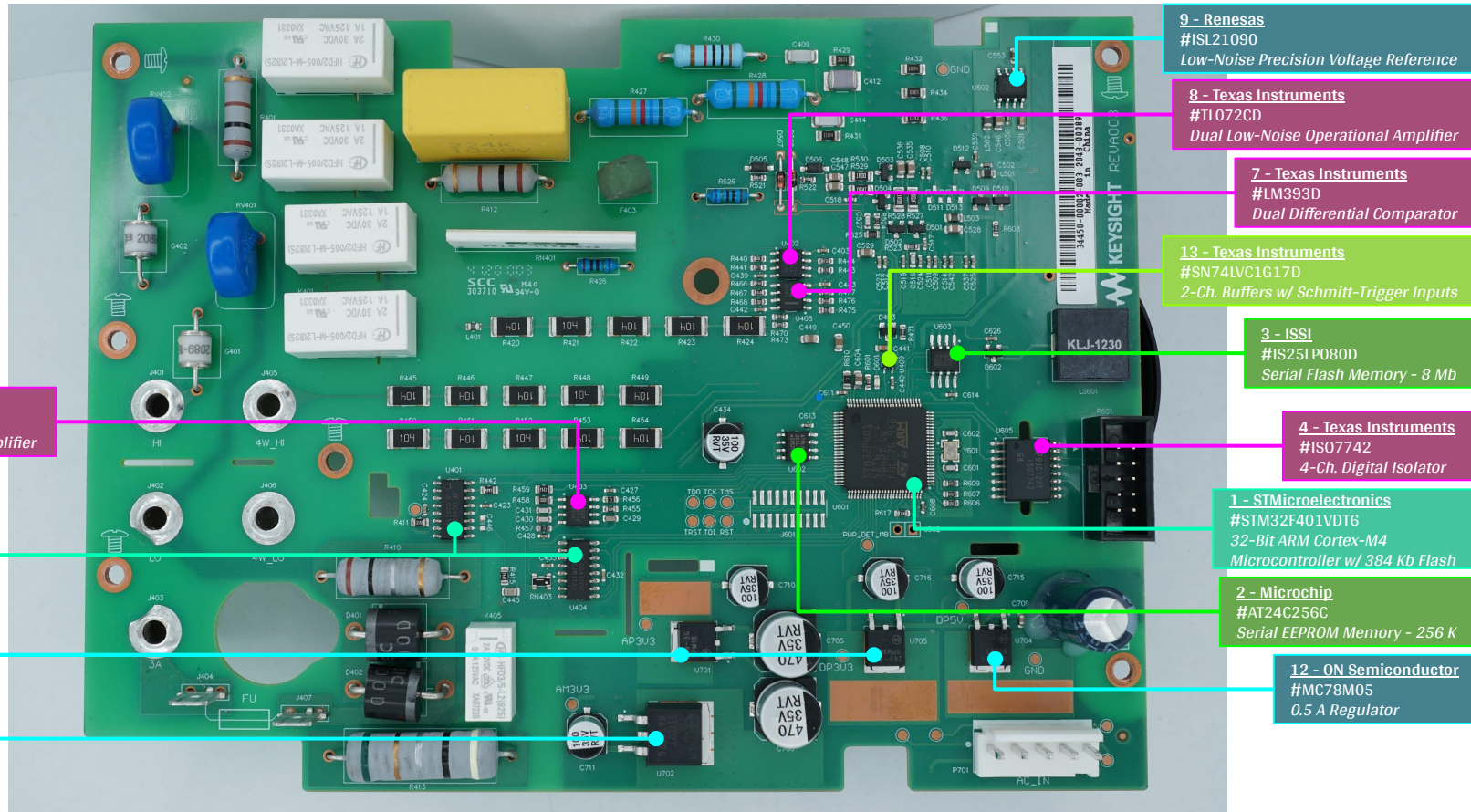
Other Substrates

Front End Side 1 IC Identification

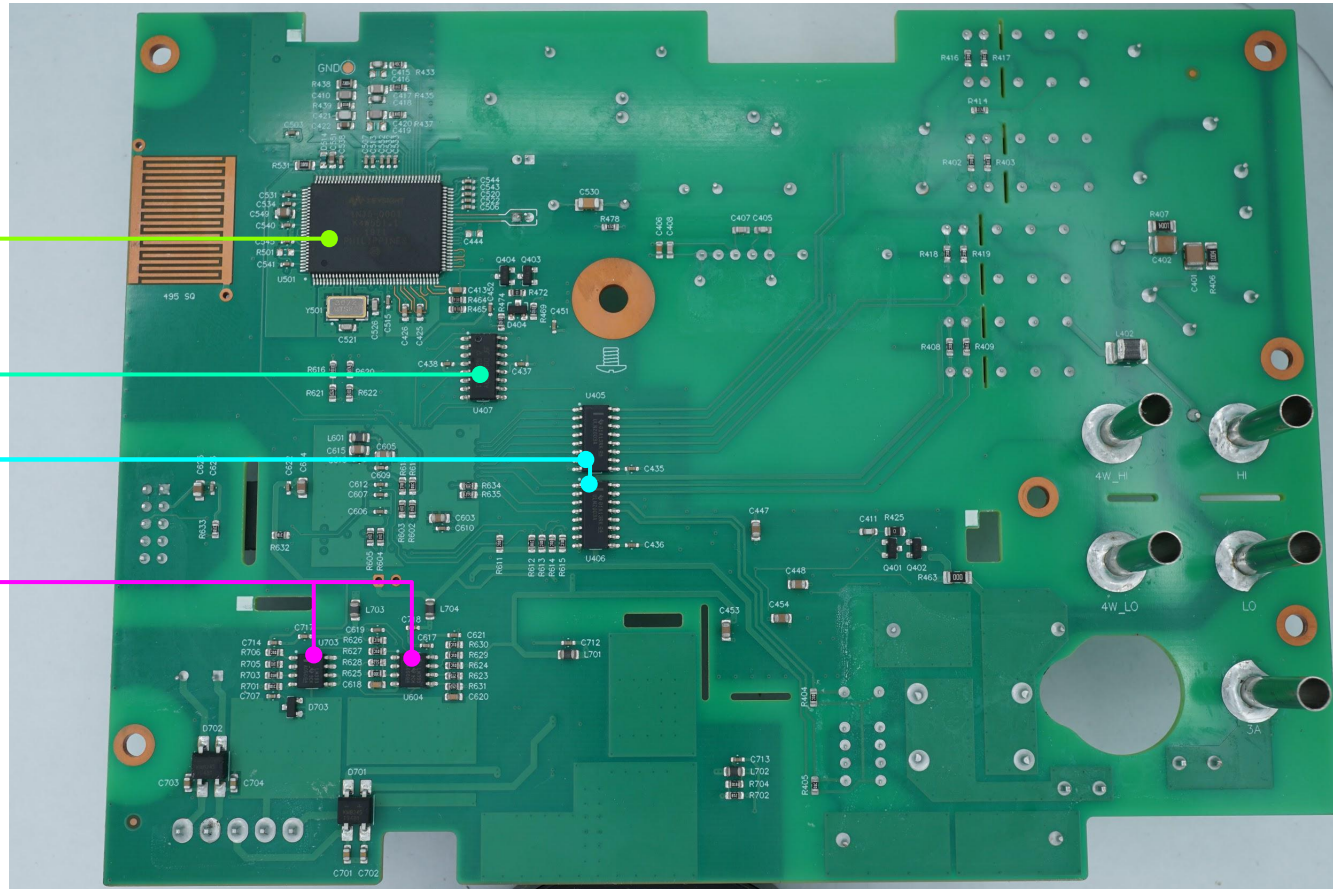
Picture Credit: EEVBlog

Function:

- Logic
- Memory
- Mixed Signal
- Power
- Other

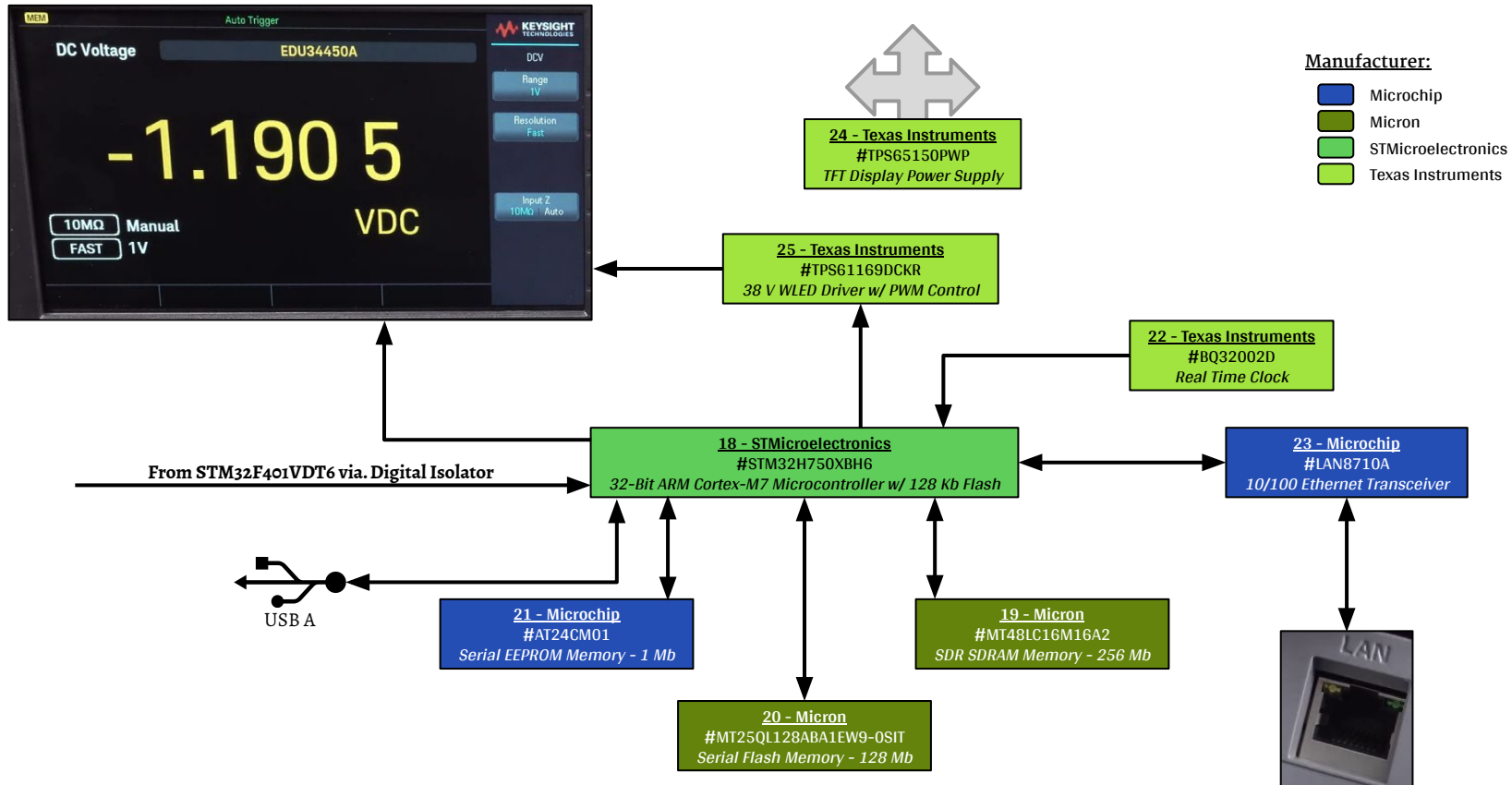


- ## 17 - Texas Instruments
- ### #LM393D
- #### Dual Differential Comparator



Block Diagram System

Picture Credit: EEVBlog



Block Diagram

Front End

Picture Credit: EEVBlog

Currently Unavailable