








Click the U dish AMPX1 SOFT folder into the software installation package

	drivers	2011/11/10 10:59	文件夹	
	program files	2011/11/10 10:58	文件夹	
	System32	2011/11/10 10:58	文件夹	
	0x0409	2004/3/12 18:54	配置设置	6 KB
	Autorun	2010/9/18 10:34	安装信息	1 KB
	instmsia	2002/3/11 8:45	应用程序	1,669 KB
	instmsiw	2002/3/11 9:06	应用程序	1,780 KB
	MultiMeter	2010/9/18 10:34	Windows Install...	594 KB
	setup	2010/9/18 10:34	应用程序	248 KB
	Setup	2010/9/18 10:34	配置设置	2 KB

Click the drivers folder into the driver installation package

	Windows_2K_XP_S2K3_Vista	2011/11/10 10:59	文件夹
	Windows_7	2011/11/10 10:59	文件夹


Select the operating system version, For example, Windows\_7 OS.

	x64	2011/11/10 10:59	文件夹	
	x86	2011/11/10 10:59	文件夹	
	CP210xVCPInstaller	2009/10/8 13:45	应用程序	176 KB
	ReleaseNotes	2009/10/8 13:45	文本文档	5 KB
	setup	2009/10/8 13:45	配置设置	1 KB
	slabvcp	2009/10/8 13:45	安全目录	10 KB
	slabvcp	2009/10/8 13:45	安装信息	5 KB

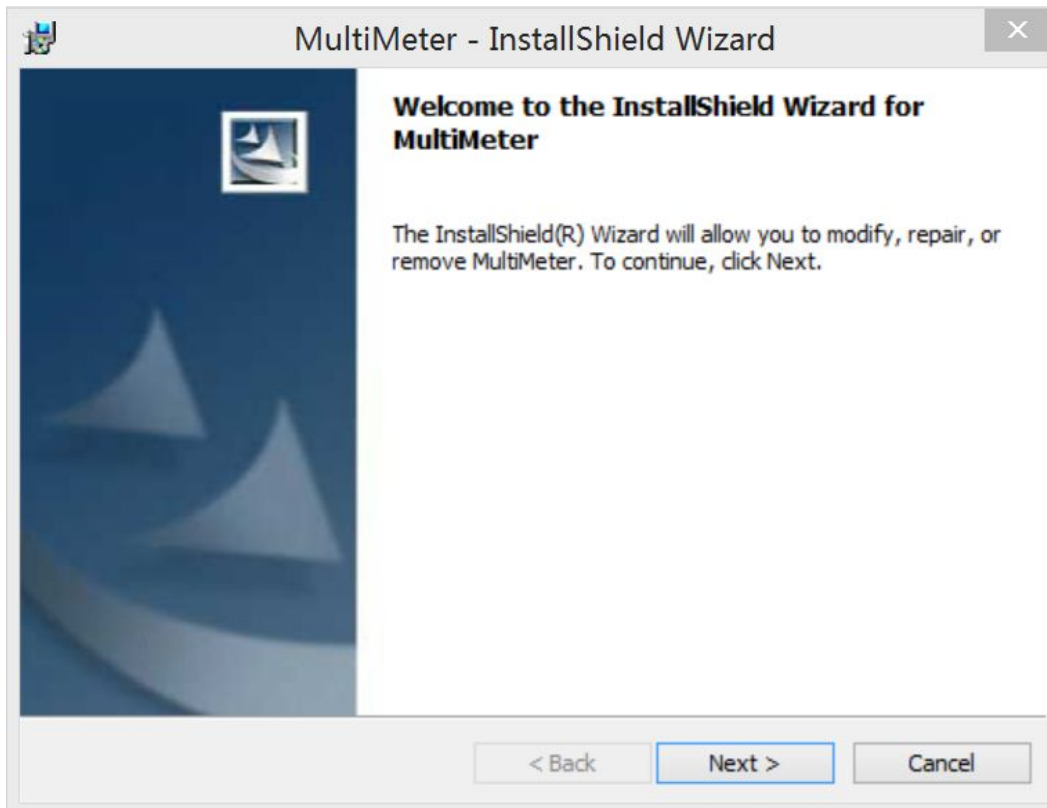
Click CP210xVCPInstaller driver installation



## Return AMPX1 soft root directory

 drivers	2011/11/10 10:59	文件夹	
 program files	2011/11/10 10:58	文件夹	
 System32	2011/11/10 10:58	文件夹	
 0x0409	2004/3/12 18:54	配置设置	6 KB
 Autorun	2010/9/18 10:34	安装信息	1 KB
 instmsia	2002/3/11 8:45	应用程序	1,669 KB
 instmsiw	2002/3/11 9:06	应用程序	1,780 KB
 MultiMeter	2010/9/18 10:34	Windows Install...	594 KB
 setup	2010/9/18 10:34	应用程序	248 KB
 Setup	2010/9/18 10:34	配置设置	2 KB

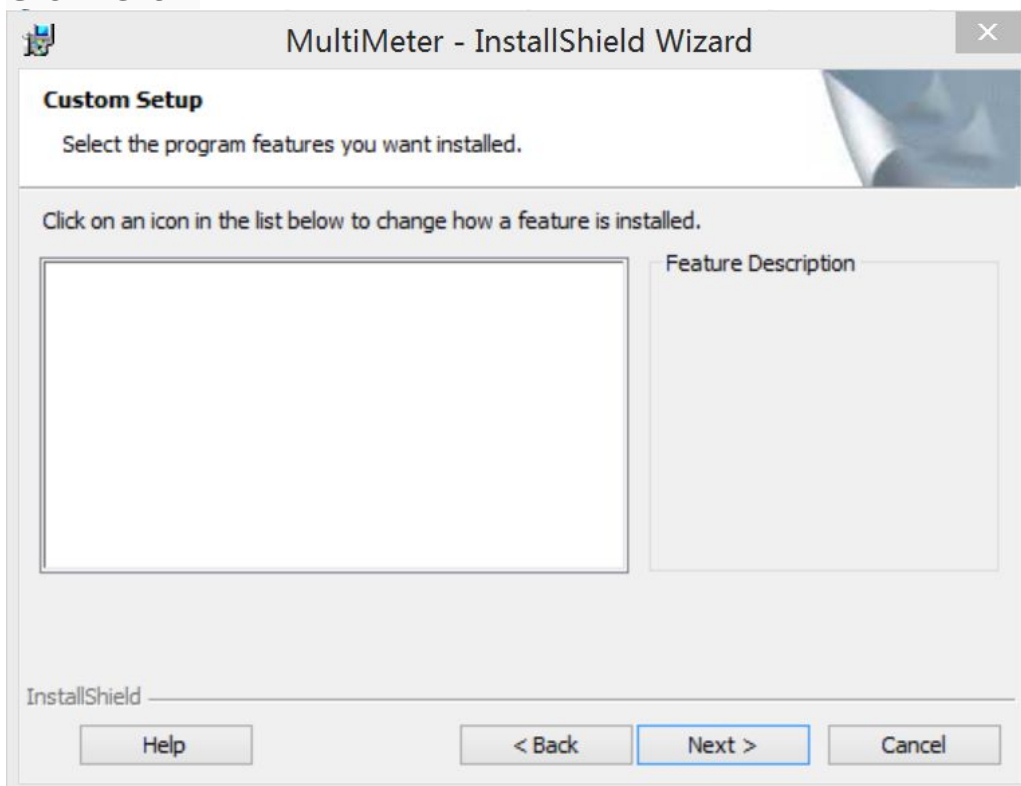
Click on the setup. Run software installation



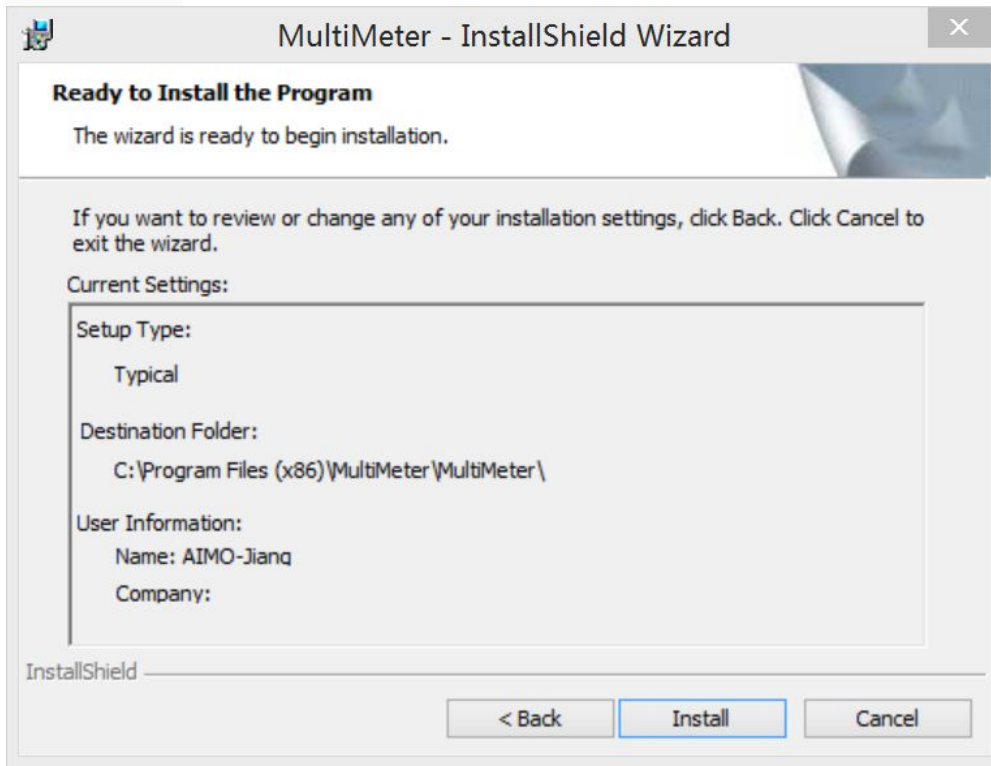
Click Next



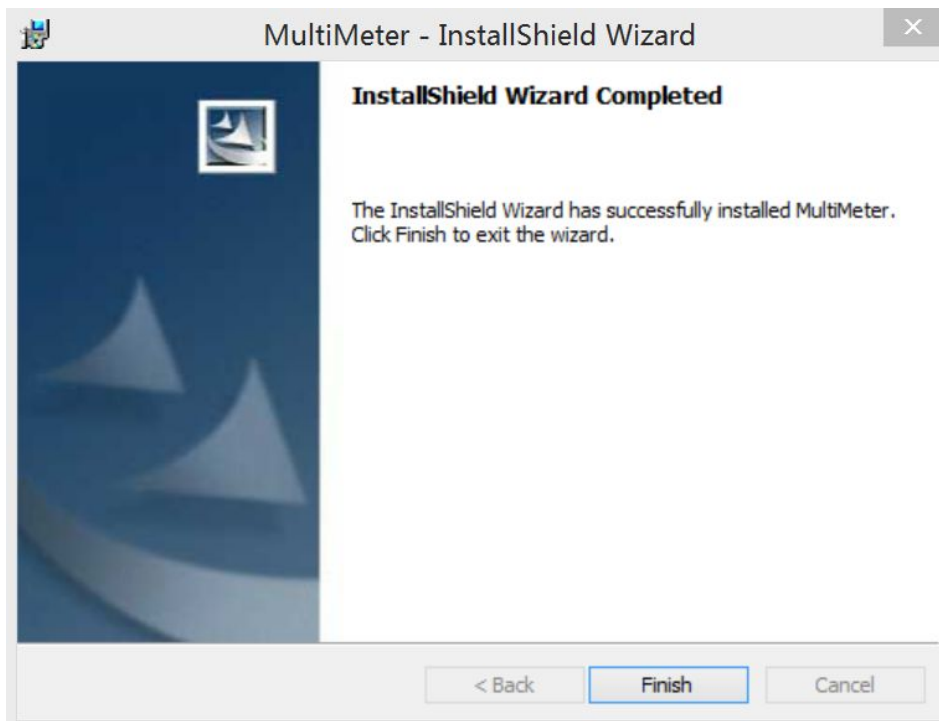
Click Next



Click Next

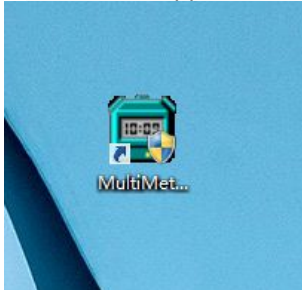


Click finish to complete the installation

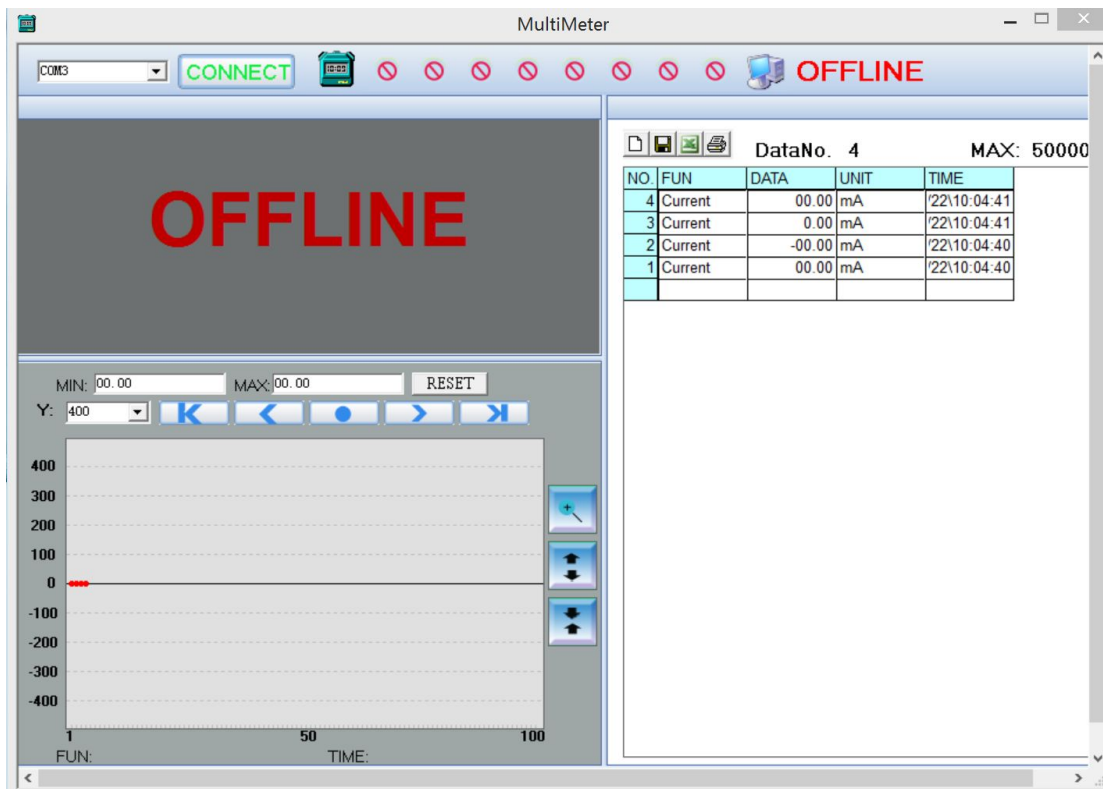


When need data transmission, steps as follow:

1. Turn on the meter, select the required gear.
2. Connect the meter and PC with USB cable
3. Press the USB key of meter
4. Launch the application. click the icon.



Click on the CONNECT, start to logging data



You can click here to change the Y coordinate display value biggest



The minimum and maximum values can be observed on here

