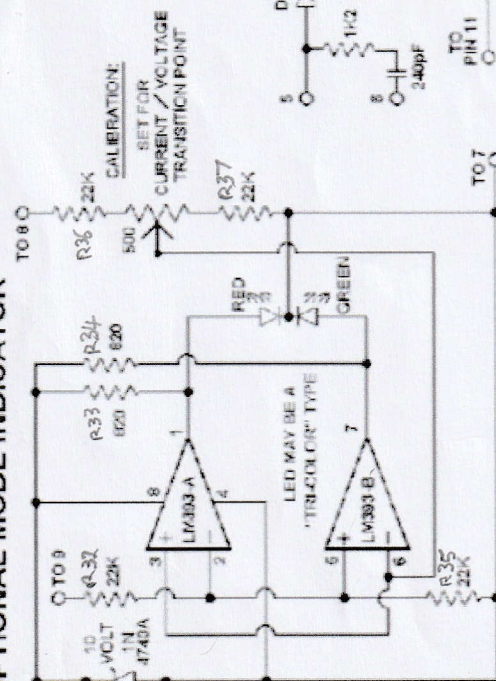
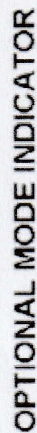
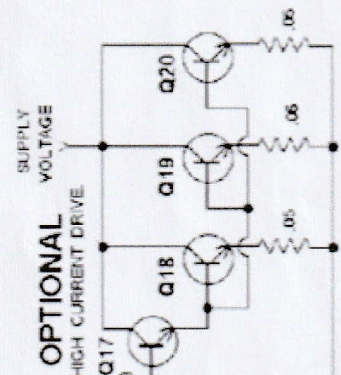


DRIVER CIRCUIT
POWER SUPPLY
11 18
VAC
LINE
VOLTAGE

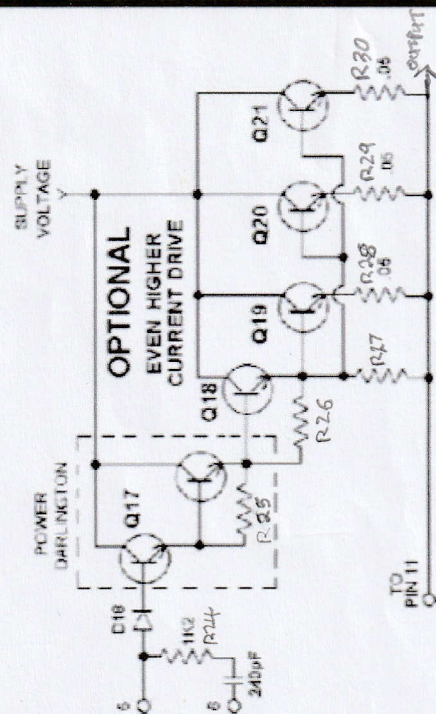
<p>All Capacitors in μF. UNLESS OTHERWISE STATED</p>	<p>Q3, Q5, Q13, Q16 = 2N3906</p>
<p>Q1, Q2, Q4, Q6, Q7, Q8, Q9, Q10, Q11, Q12, Q14, Q15 = 2N3906</p>	
<p>Q17, Q18, F16 = POWER-TYPE MPN</p>	
<p>Z1, Z2 = 1N4735A 6.8 VOLTS 1/4 WATT Z1A, Z2A = 1N4605</p>	
<p>D1, D2, D3, D4, D6, D6, D7, D10, D11, D12, D13, D14 = 1N4148</p>	
<p>D8, D9, D15, D16, D17, D18, D19 = 1N4006</p>	
<p>D20, D21, D22, D23, D4A, D26 = AS APPROPRIATE FOR THIS CURRENT AND VOLTAGE</p>	



THESE POINTS AND NUMBERS
12 Q
REPRESENT THE ORIGINAL IC PIN NUMBERS



OPTIONAL
HIGH CURRENT DRIVE



**OPTIONAL
EVEN HIGHER
CURRENT DRIVE**

BY PLACING A MILLI-VOLTMETER ACROSS "R3" AND CALIBRATING IT, OUTPUT CURRENT CAN BE MEASURED WITHOUT ANY LOSS IN VOLTAGE.