

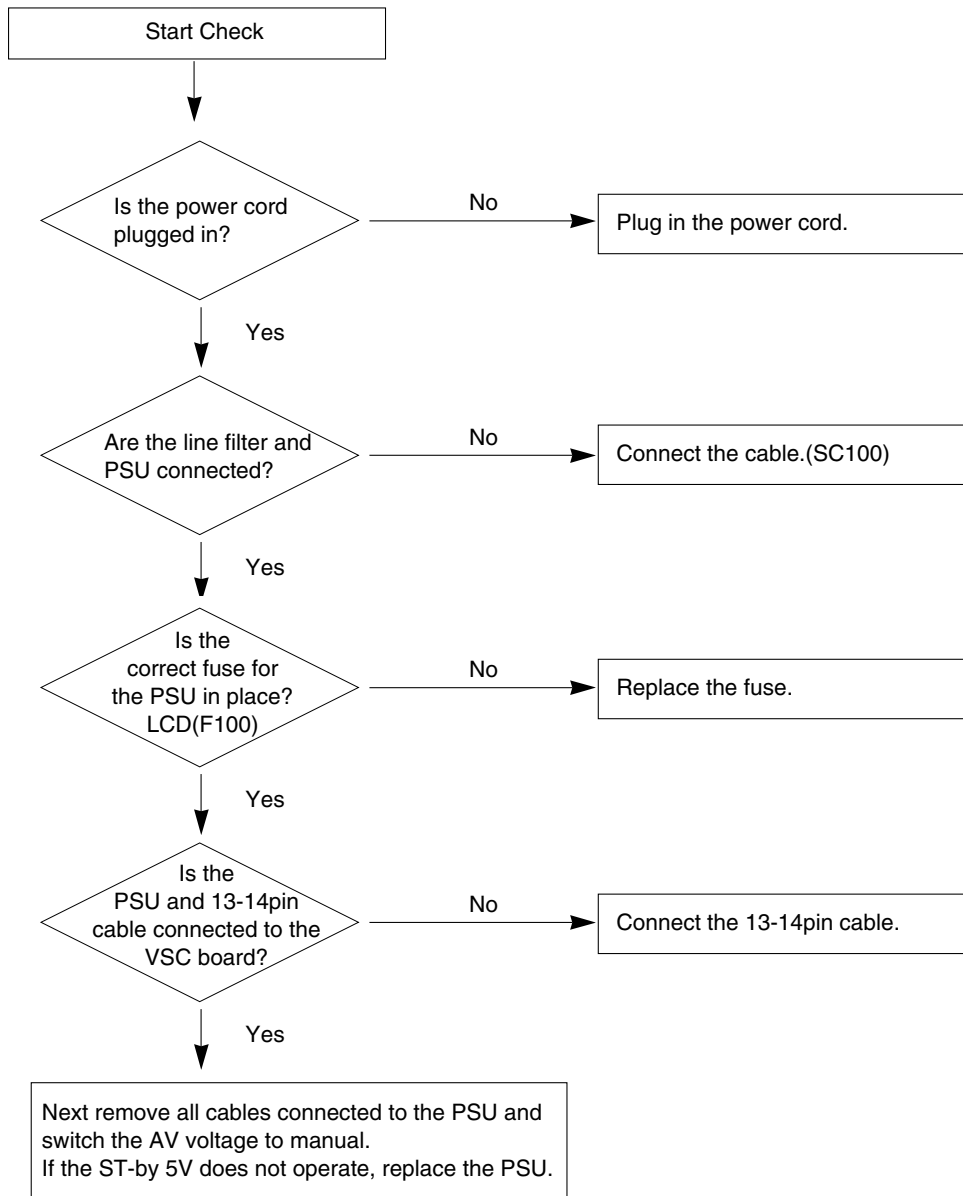
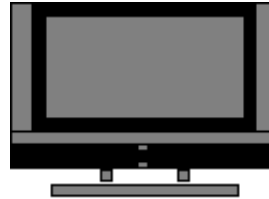
TROUBLESHOOTING

1. No power

(1) Symptom

- 1) Minute discharge does not occur at module.
- 2) Front LED does not activate.

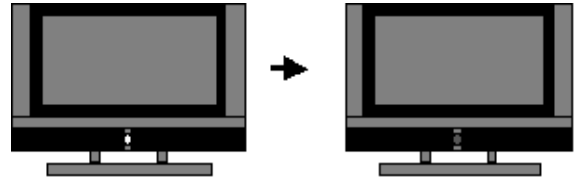
(2) Press check



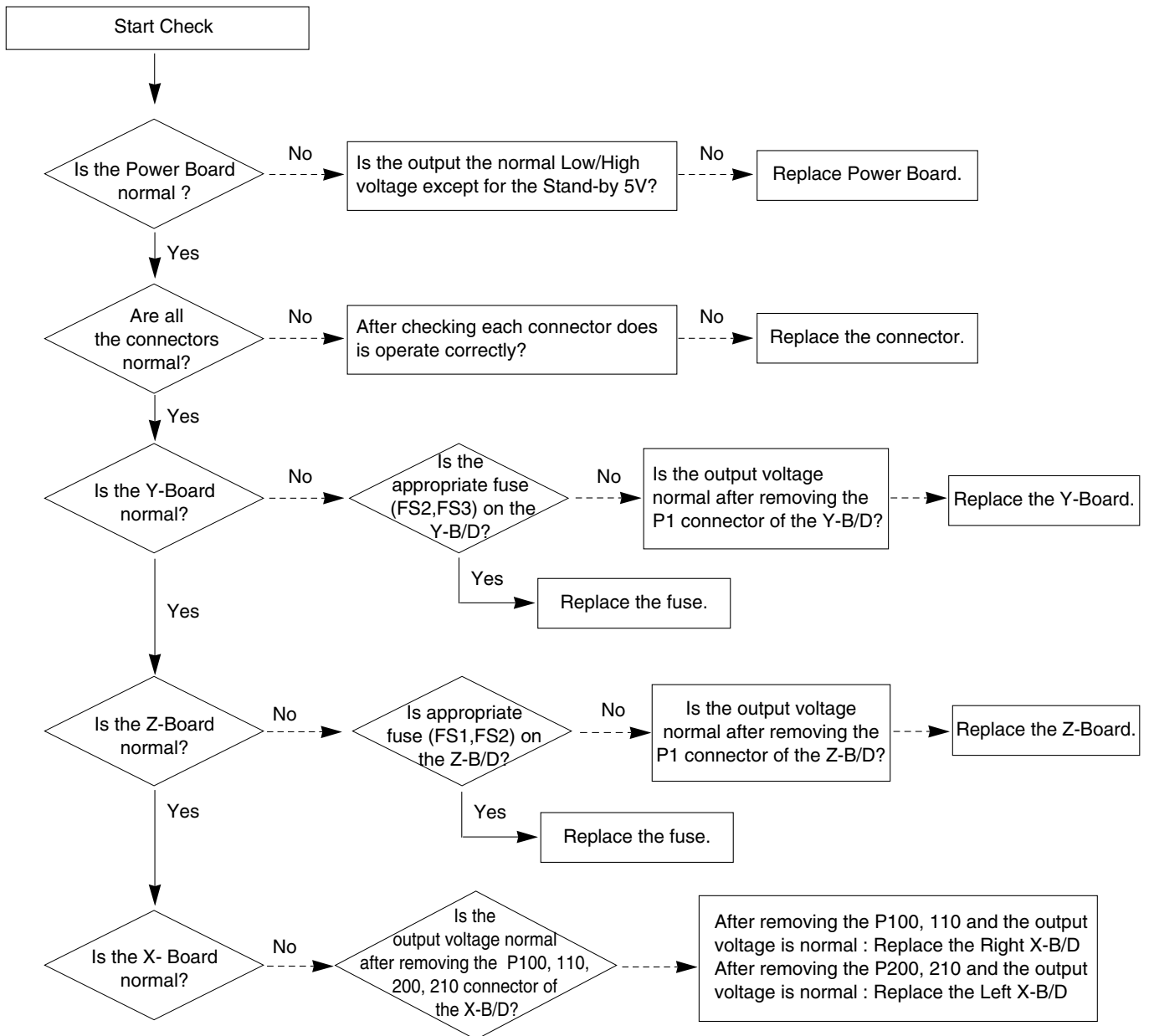
2. Protect mode

(1) Symptom

- 1) After lighting once it does not discharge minutely from the module.
- 2) The relay falls.(there is an audible "Click".)
- 3) The color of the front LED turns from green to red.



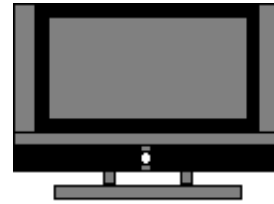
(2) Follow check



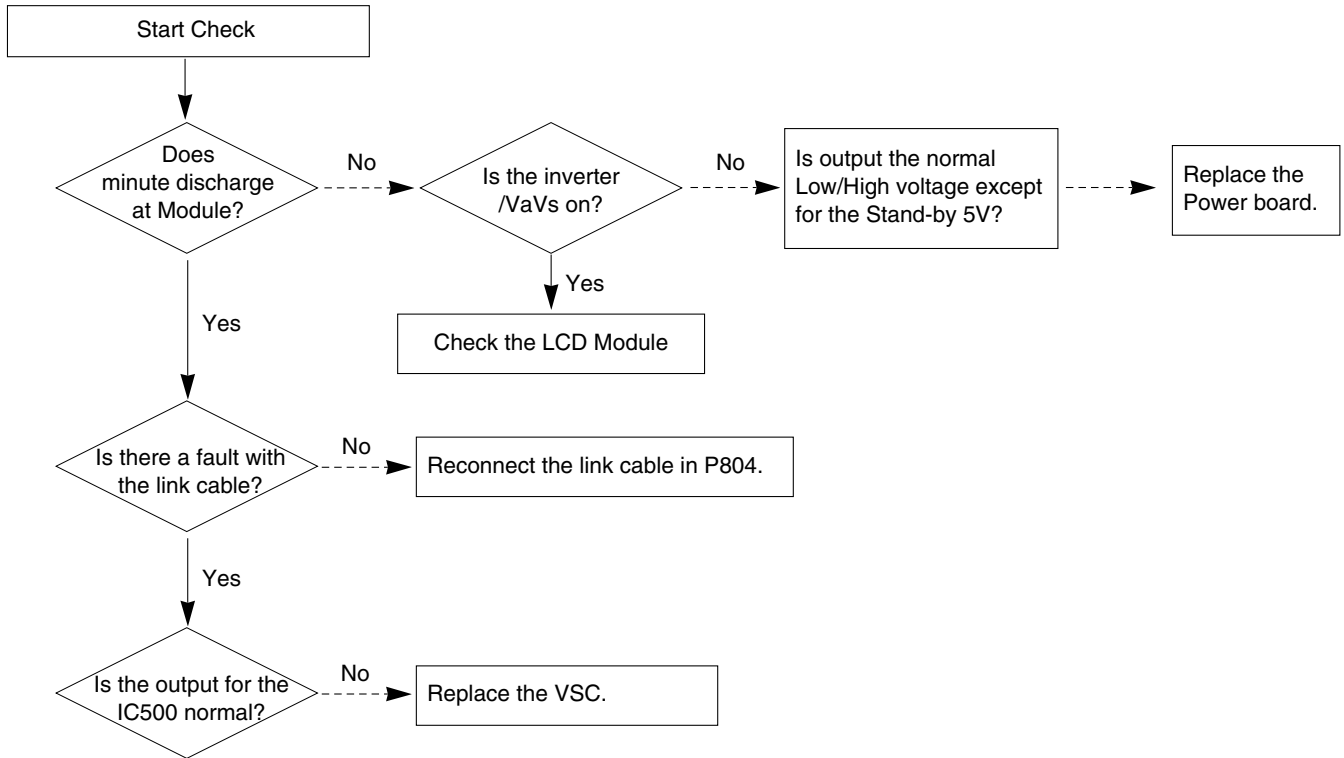
3. No Raster

(1) Symptom

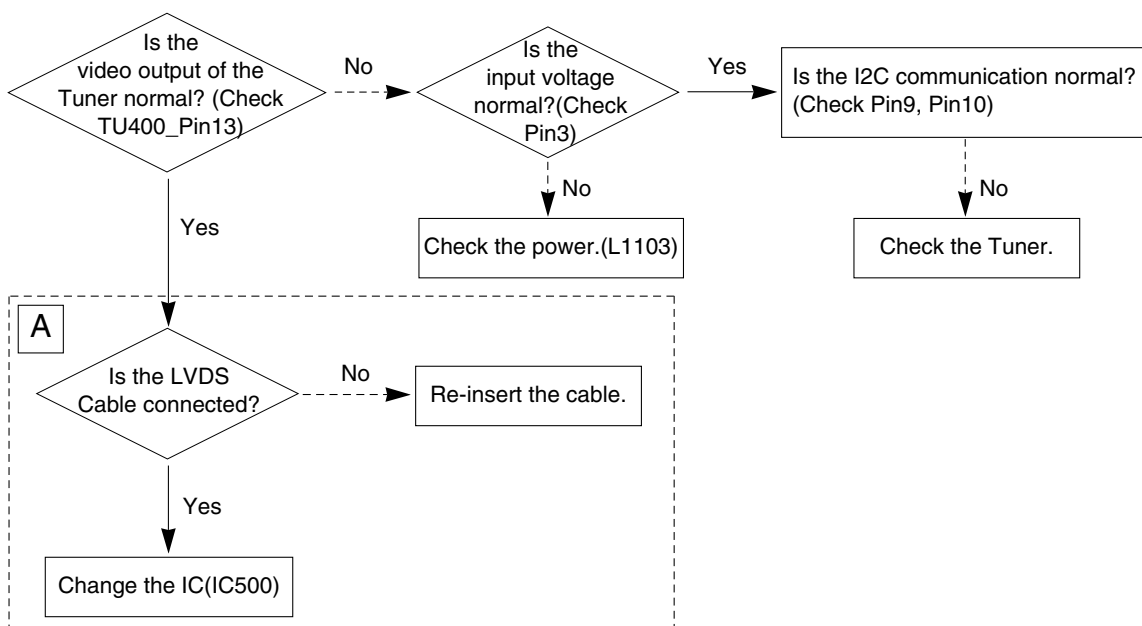
- 1) No OSD or image are displayed on the screen.
- 2) The front LED remains green.



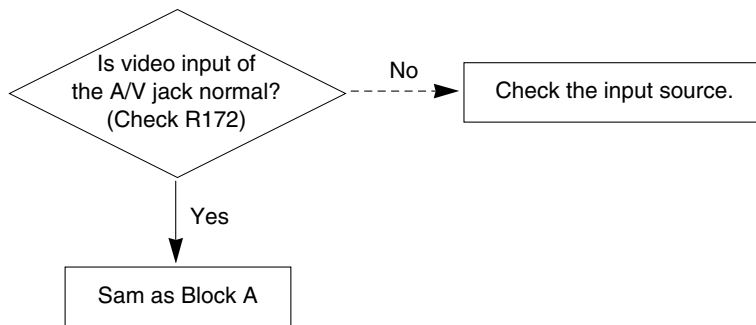
(2) Follow check



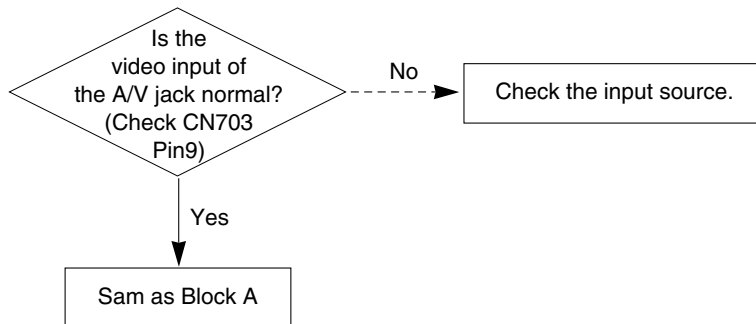
4. In the case an unusual display in RF mode.



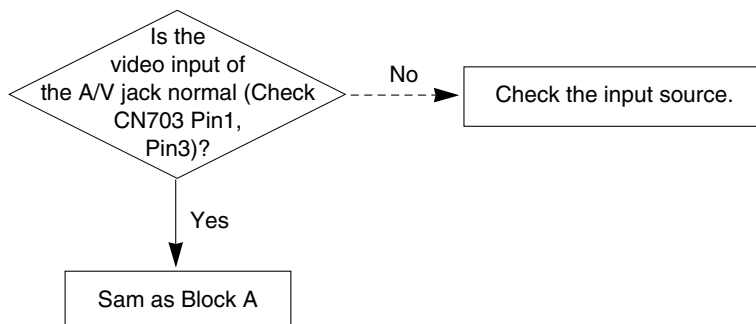
5. In the case of an unusual display in rear AV mode.



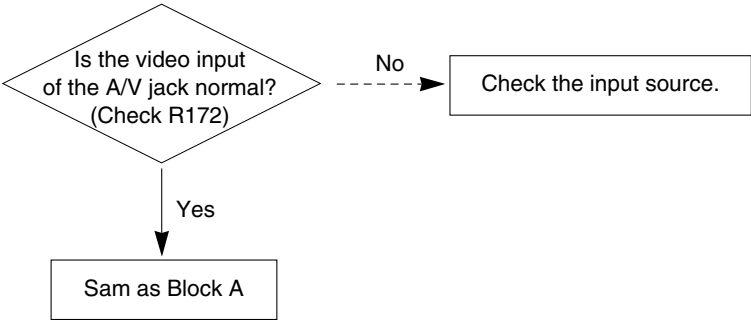
6. In the case of an unusual display in Side AV mode.



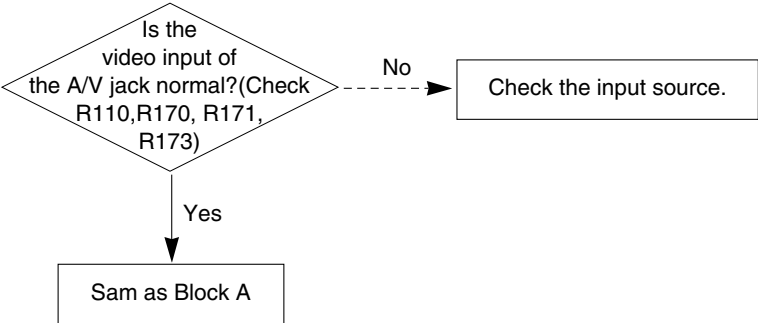
7. In the case of an unusual display in Side S-Video mode.



8. In the case of an unusual display in SCART 1 mode.



9. In the case of an unusual display in SCART 1_RGB mode.



10. In the case of an unusual display in SCART 2 mode.

